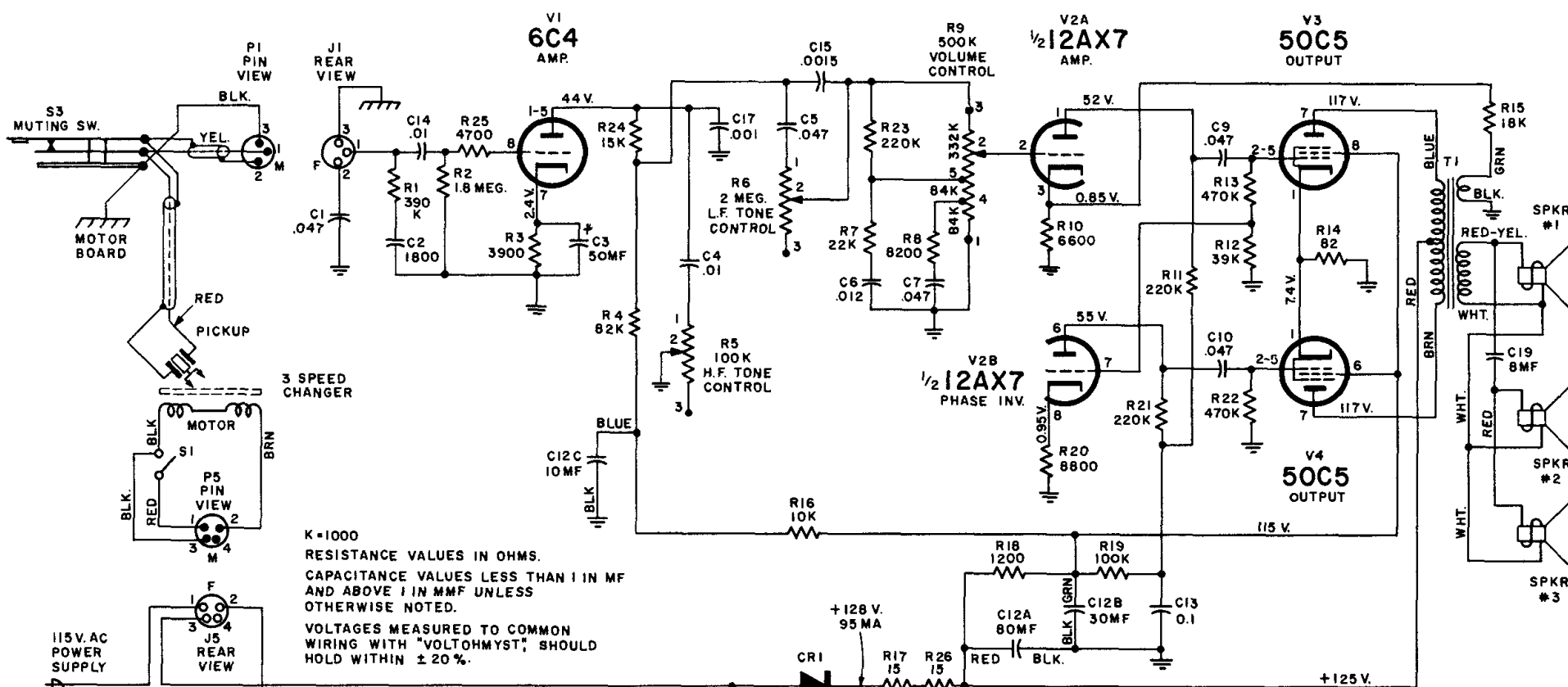


RCA

MODEL 6-HF-4

Chassis No. RS-146C

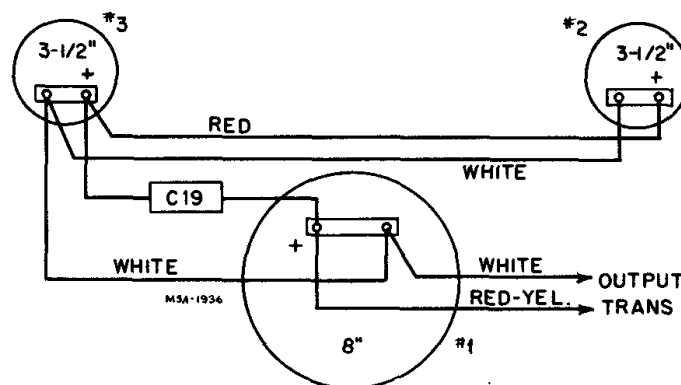


CRITICAL LEAD DRESS

1. Dress all capacitors except C4 and C5 against chassis.
2. Dress R17 at least $\frac{1}{2}$ " away from C11 and C12.
3. Dress all leads away from R18.
4. Keep all leads on R1, R2, C2, and C14 as short as possible
5. Dress all filament wiring against chassis.

STYLUS REPLACEMENT

The dual stylus is held in position by a spring clamp. To remove stylus, simply hold pickup sideways and pull spring clamp away from stylus and allow it to drop out. When inserting stylus, be certain that the small diameter rod holding the styli rests in the notch of the drive arm connecting to the cartridge element.



Speaker Connection Diagram

Top View of Amplifier