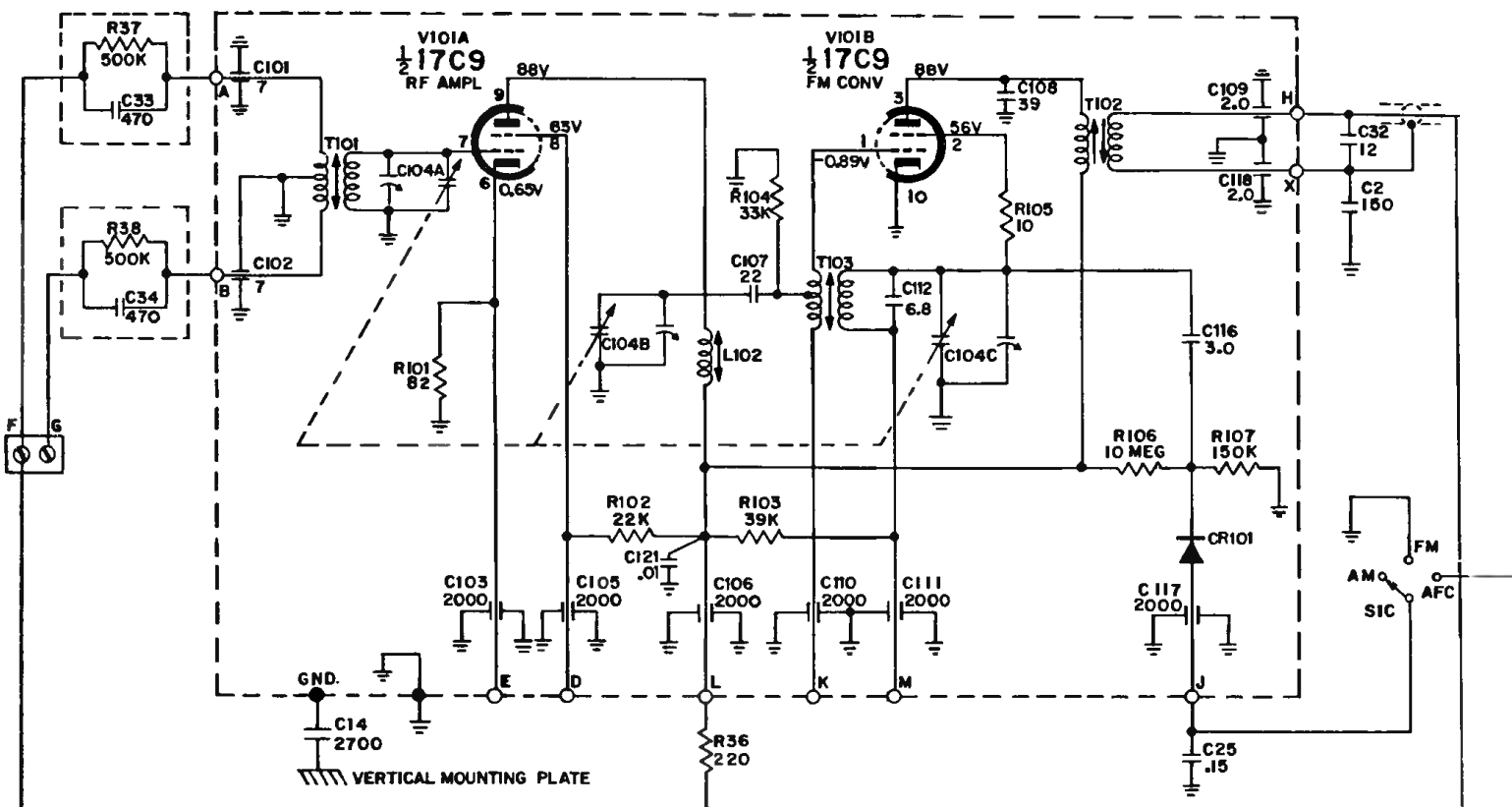


3RC4, 3RC5, 3RC7 Series, Chassis RC-1209A, -B, -C,
Models 3RC41, 3RC42, 3RC44, 3RC51, & 3RC76.

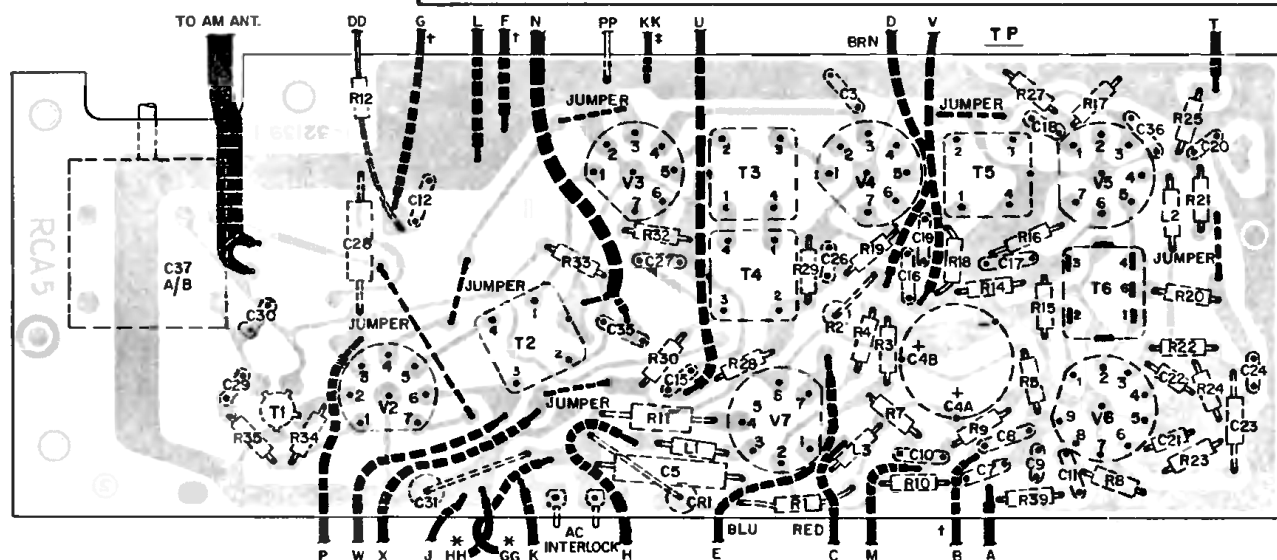
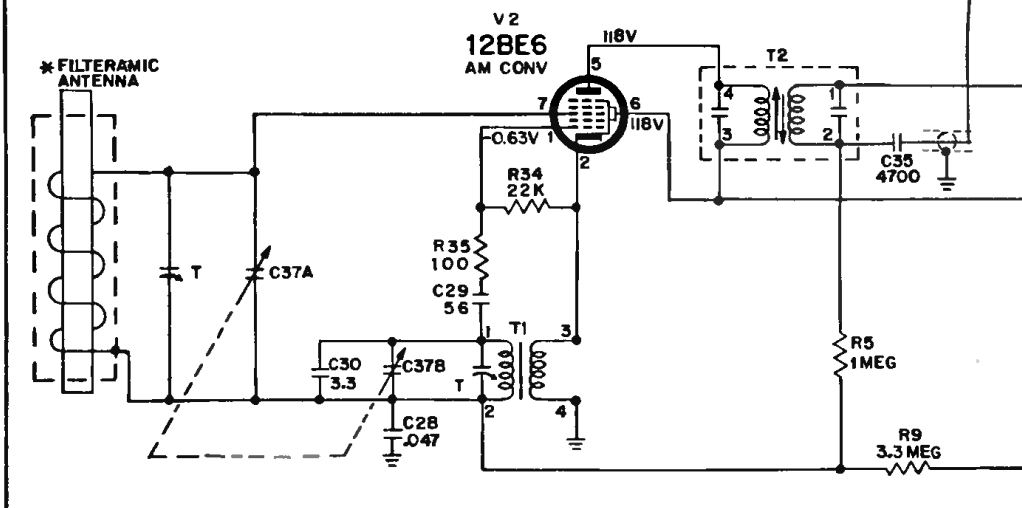


K=1000

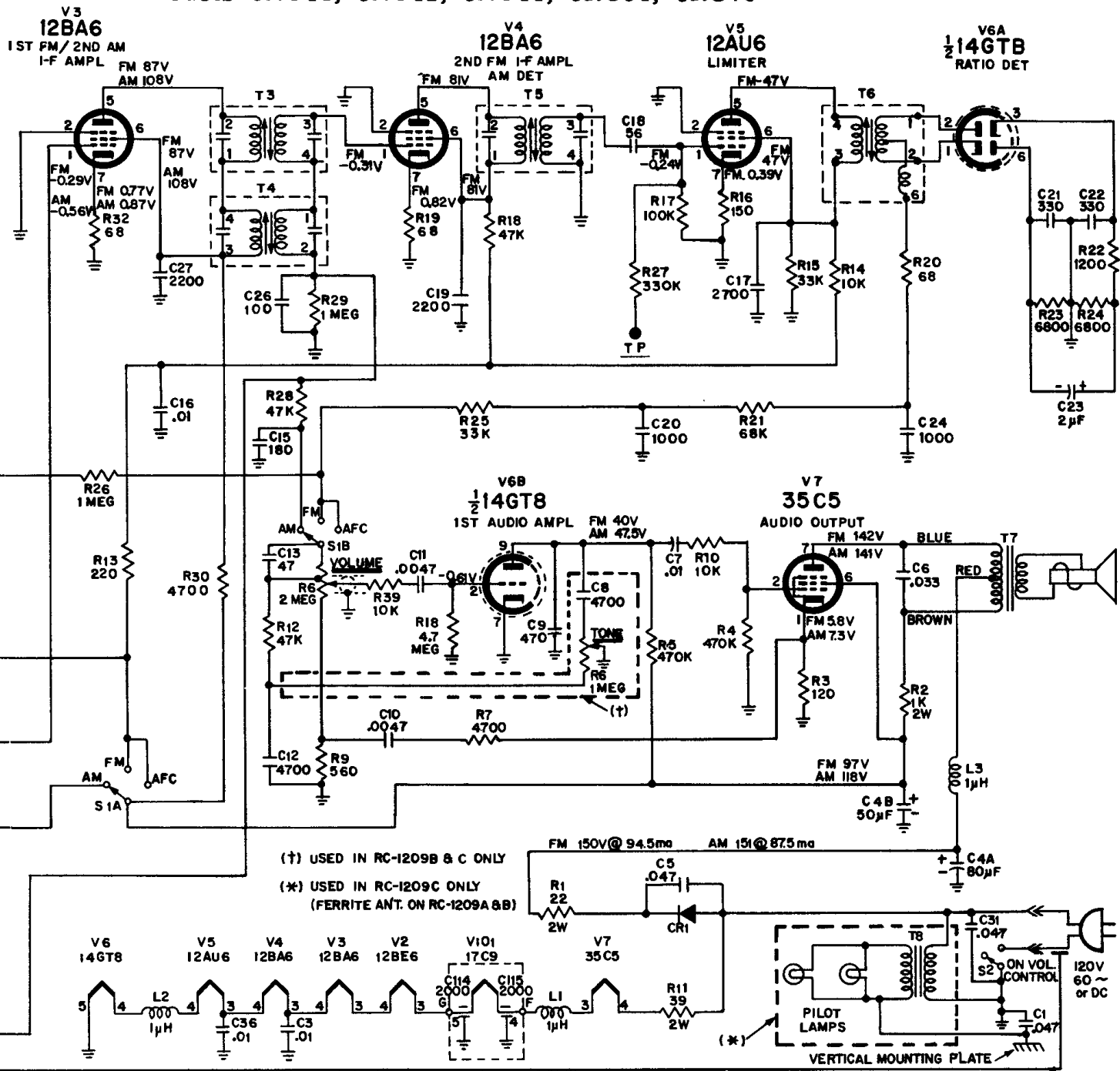
ALL RESISTANCE VALUES IN OHMS.

ALL CAPACITANCE VALUES LESS THAN 1.0
IN μF ; VALUES ABOVE 1.0 IN μF
UNLESS OTHERWISE INDICATED.

VOLTAGES MEASURED TO COMMON NEG. (1/2)
WITH "VOLTOHMYST" AND SHOULD HOLD
WITHIN $\pm 20\%$ WITH 120 VOLT INPUT.



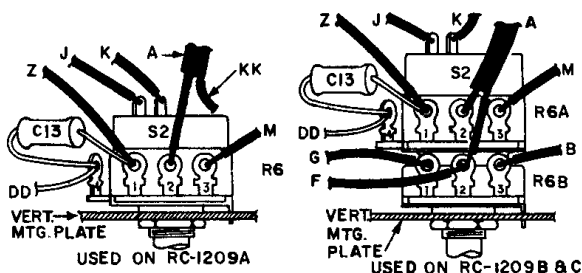
RCA Victor 3RC4, 3RC4, 3RC7 Series, Chassis RC-1209A, -B, -C,
Models 3RC41, 3RC42, 3RC44, 3RC51, 3RC76



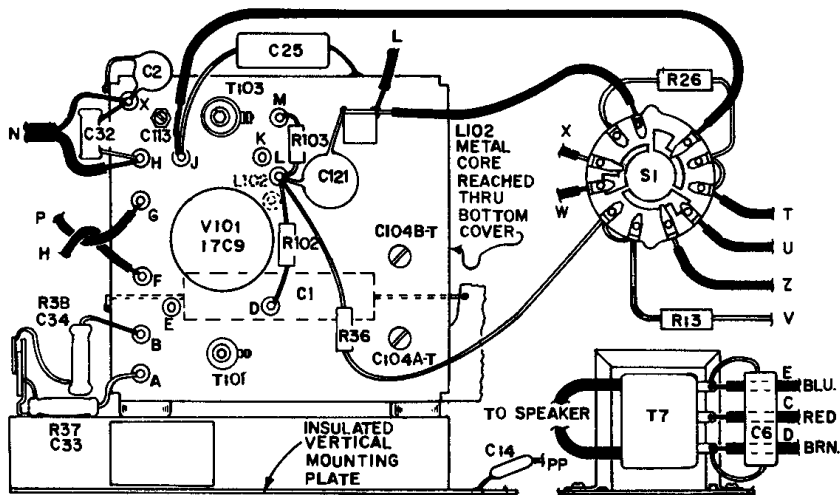
FREQUENCY RANGES	Tuning	IF
AM	530-1620 kc.	455 kc
FM	87.5-108.5 mc.	10.7 mc

POWER SUPPLY RATING

RC-1209A, B, 105-125V, 50-60 cy. or DC36 watts
RC-1209C, 105-125V, 50-60 cycle only40 watts



R6 & S2 Wiring



FM Tuner Layout