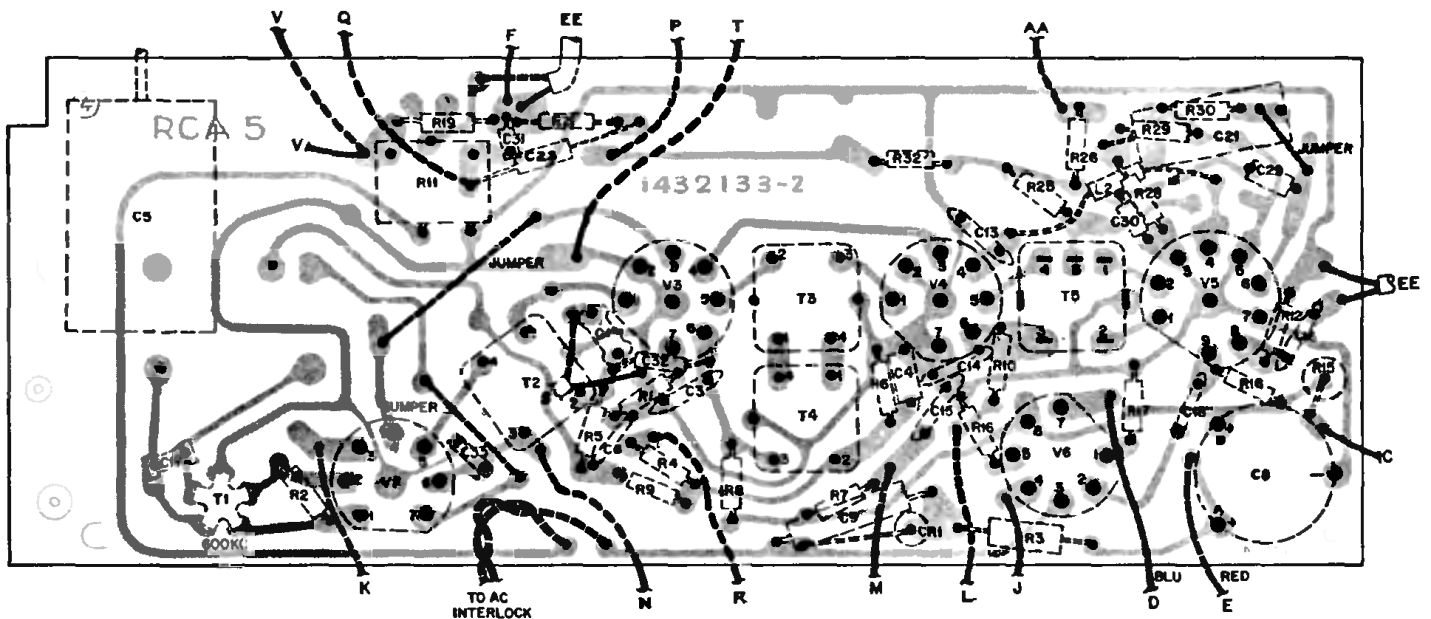
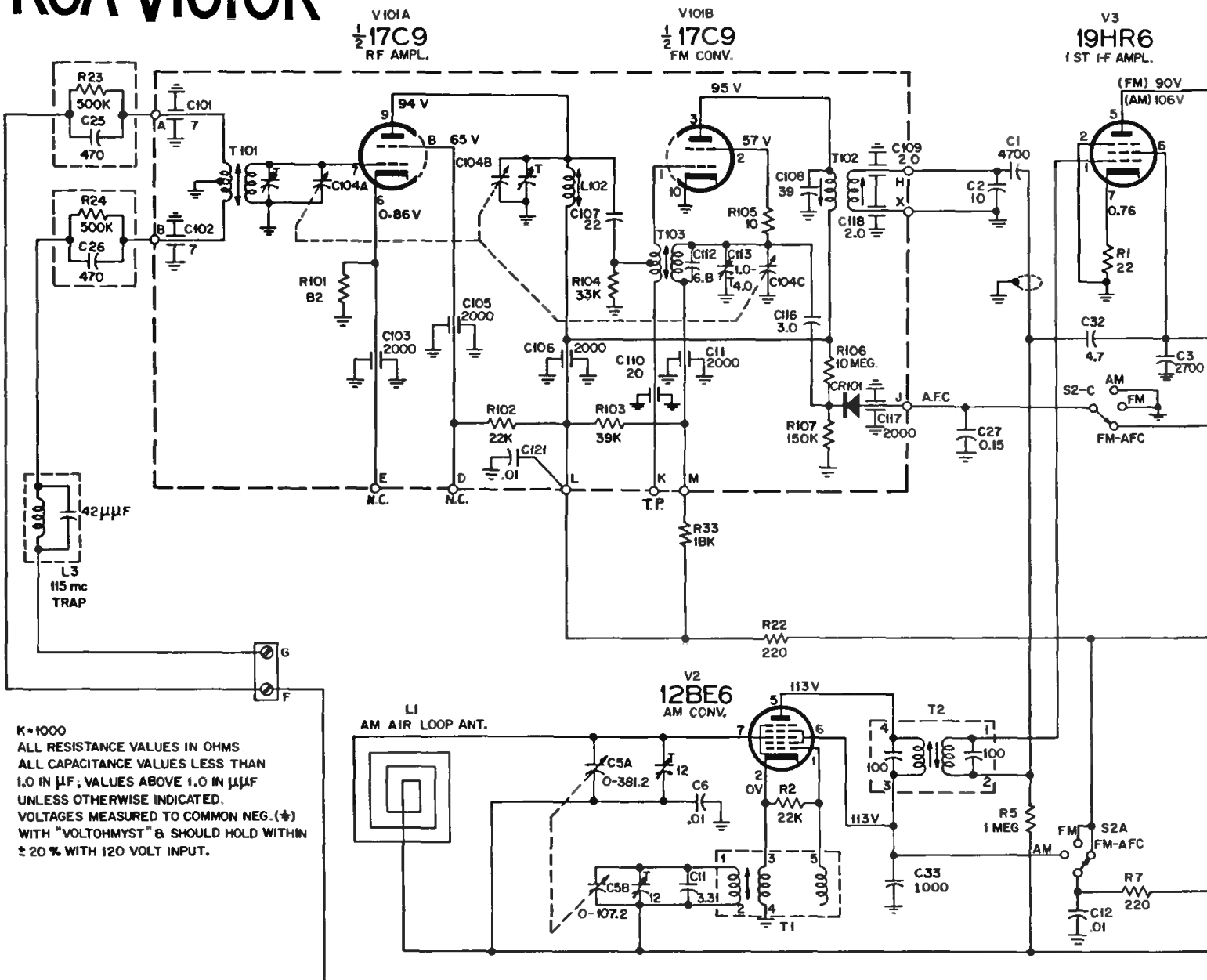


RCA VICTOR

3RC2 Series, Models 3RC21, 3RC24, Chassis RC-1210D



Chassis Wiring and Components—View from Wiring Side

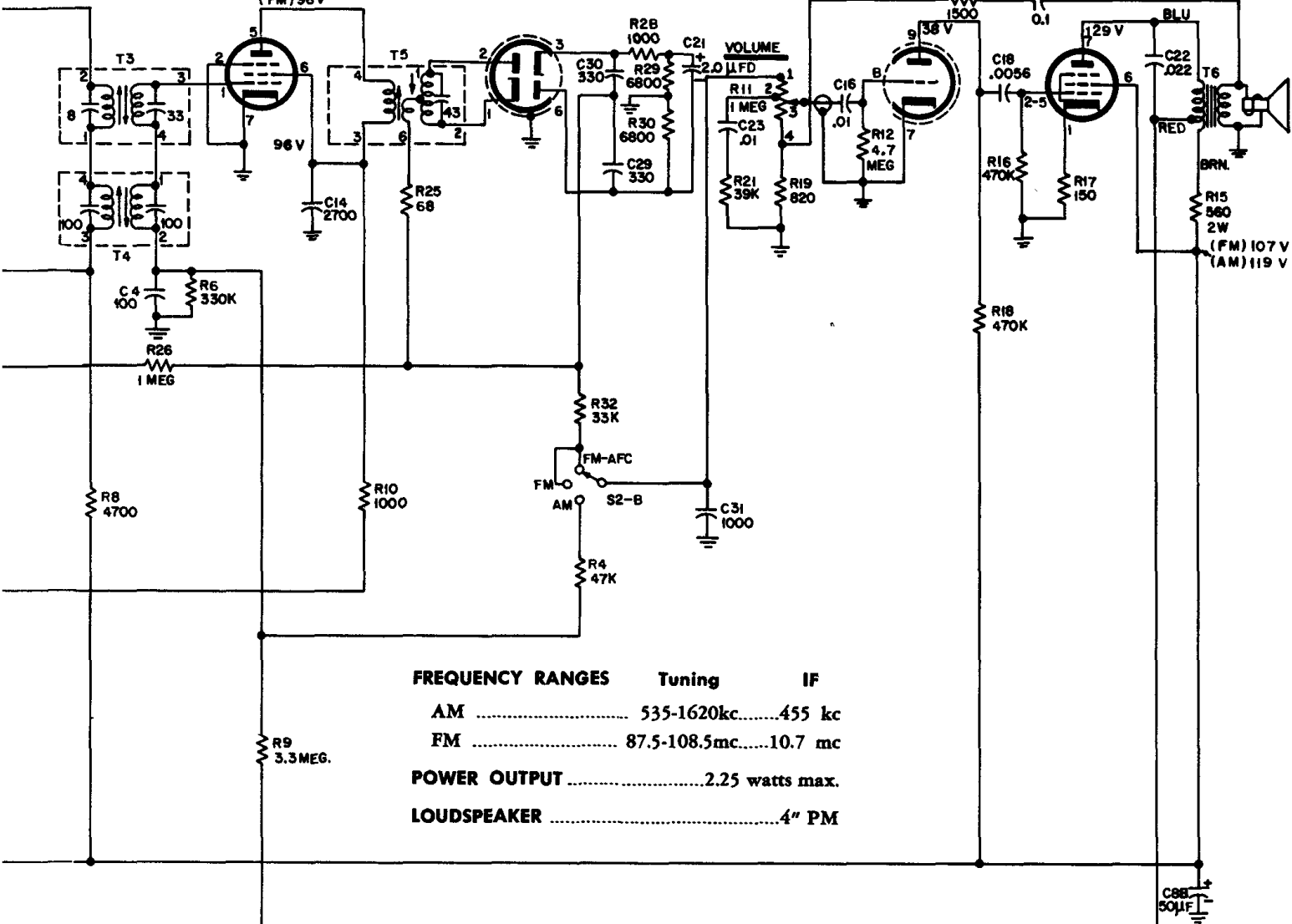
RCA Victor 3RC2 Series, Models 3RC21, 3RC24, Chassis RC-1210D

V4
12AU6
2ND FM I-F AMPL.
AM DET.
(FM) 96V

V5A
1/2 14GT8
RATIO DET.

V5B
1/2 14GT8
1ST AUDIO AMPL.

V6
50C5
AUDIO OUTPUT



FREQUENCY RANGES **Tuning** **IF**
 AM 535-1620kc.....455 kc
 FM 87.5-108.5mc.....10.7 mc
POWER OUTPUT 2.25 watts max.
LOUDSPEAKER 4" PM

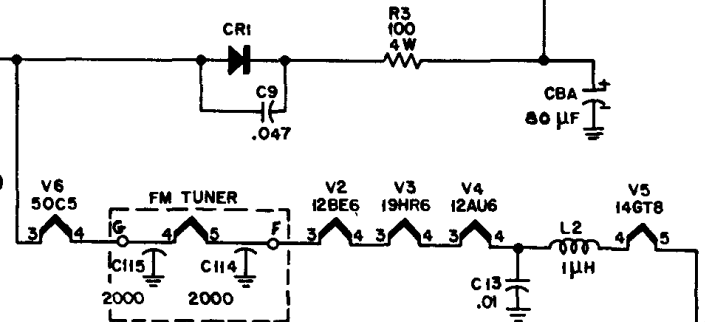
120VOLTS
AC-DC
POWER SUPPLY

ON-OFF
S1
(In Volume
Control)

OFF

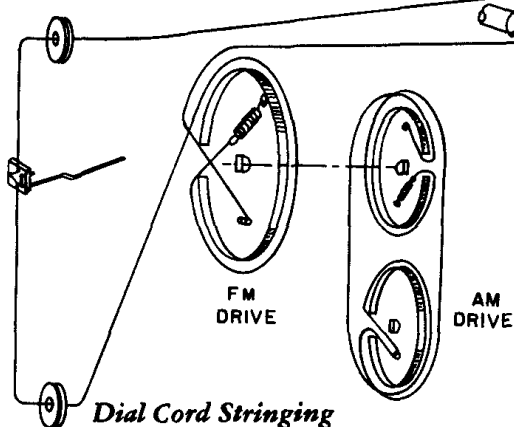
C20
2700

4 TURNS



The "Security Sealed Circuit" chassis and loudspeaker are mounted in a one piece molded plastic cabinet with a "snap-in" hardboard back cover to which is attached the FM antenna terminals, the AM antenna, and the power cord interlock plug. When the cabinet back is removed to expose the chassis, the power cord interlock removes power from the chassis; this in conjunction with the isolated control shafts, dial pointer and chassis mounting screens, removes the shock hazard.

Chassis RC-1210D utilizes superhetrodyne circuitry in both the AM and FM channels. The AM circuitry consists of a converter stage, an IF amplifier stage, a detector stage, an AF amplifier stage and a power amplifier stage. The FM circuitry consists of an RF amplifier stage, a converter stage, two IF amplifier stages, a demodulator stage, an AF amplifier stage and a power amplifier stage.



Dial Cord Stringing