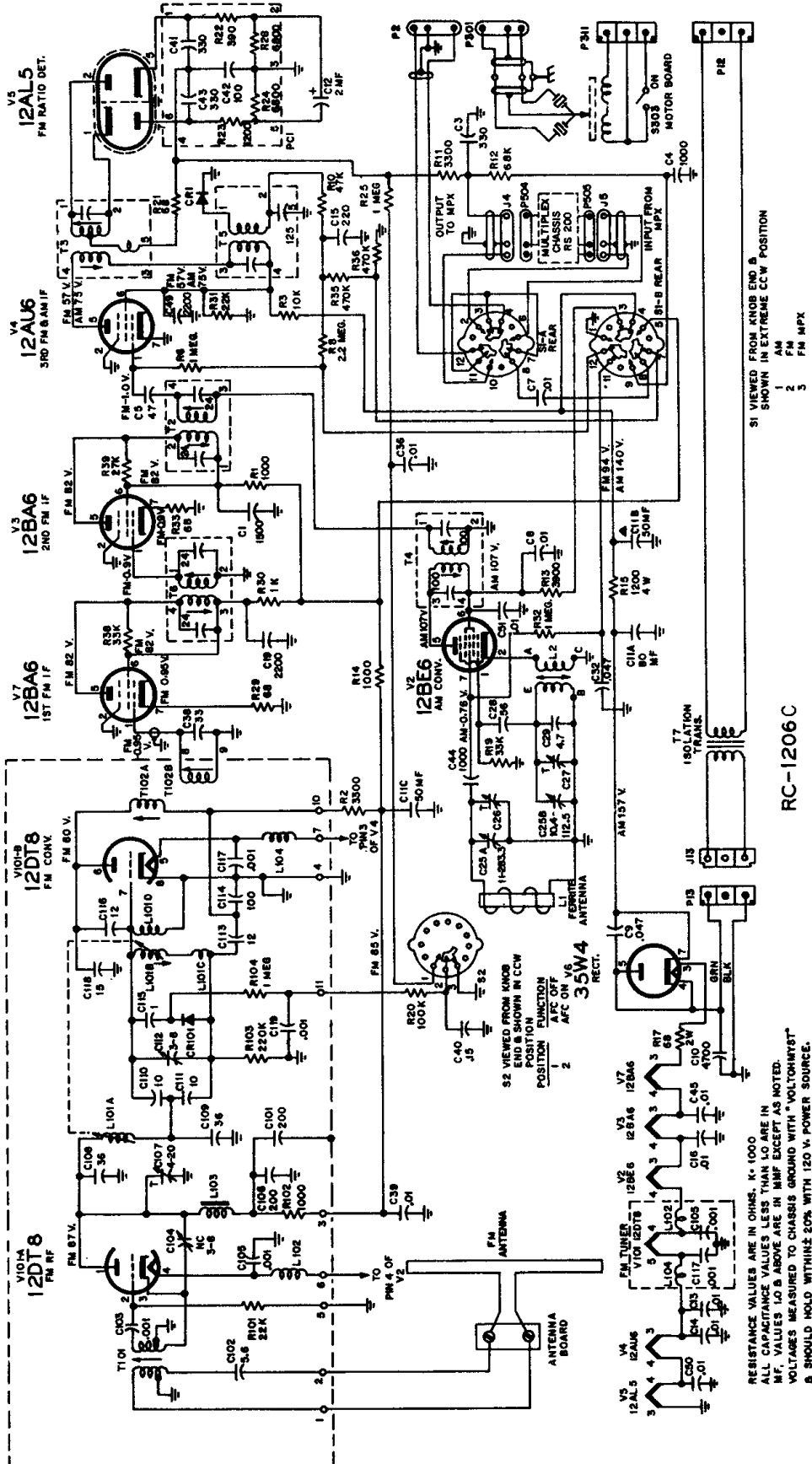


RCA VICTOR

The various models listed at right use Tuner Chassis RC-1206C that has the circuit shown on this page, or Chassis RC-1206F which is very similar. Other service material and FM-Stereo Chassis RS-200C circuit is on the next page, over, and material on Amplifier Chassis RS-193A, B, D, E, F, is on the following page.



3-VE-0 Series 3-VE-1 Series 3-VE-2 Series 3-VF-0 Series 3-VF-1 Series 3-VF-2 Series 3-VF-1X Series 3-VF-2X Series

Tuner Chassis RC-1206C, F
FM-Stereo Chassis RS-200C

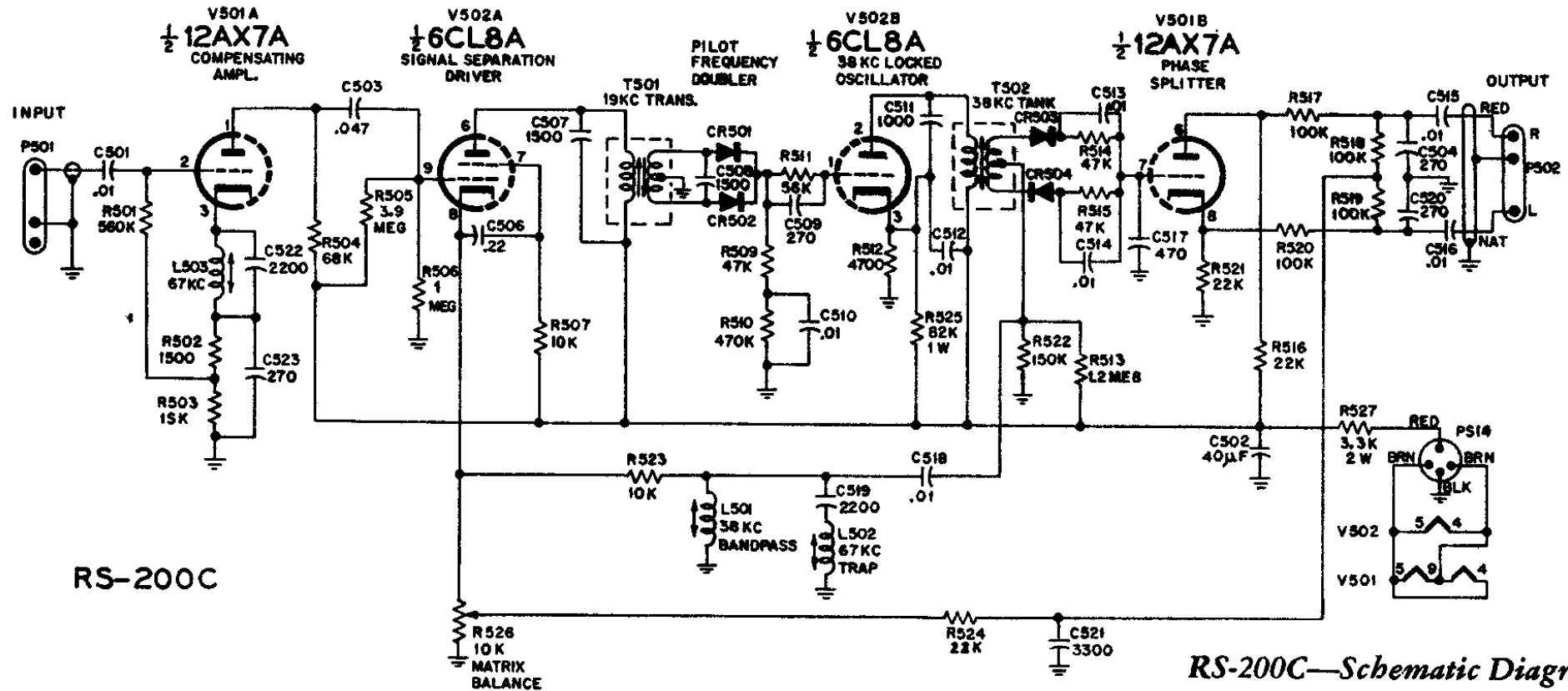
Amplifier Chassis
RS-193A, B, D, E, F

MODEL	NAME	STYLING
3-VE-075	Tenor	Contemporary
3-VE-086	Soprano	Danish
3-VE-04	Barcarolle	Early American
3-VE-105	Bolero	Contemporary
3-VE-106	Bolero	Contemporary
3-VE-107	Bolero	Contemporary
3-VE-205	Largo	Contemporary
3-VE-207	Largo	Contemporary
3-VE-226	Humoresque	Danish
3-VE-244	Tanglewood	Early American
3-VF-065	Baritone	Contemporary
3-VF-066	Baritone	Contemporary
3-VF-105	Bolero	Contemporary
3-VF-105X	Bolero	Contemporary
3-VF-106	Bolero	Contemporary
3-VF-106X	Bolero	Contemporary
3-VF-107	Bolero	Contemporary
3-VF-107X	Bolero	Contemporary
3-VF-205	Largo	Contemporary
3-VF-205X	Largo	Contemporary
3-VF-207	Largo	Contemporary
3-VF-207X	Largo	Contemporary
3-VF-226	Humoresque	Danish
3-VF-226X	Humoresque	Danish
3-VF-244	Tanglewood	Early American
3-VF-244X	Tanglewood	Early American

RCA VICTOR

3-VE-0, -1, -2 Series
3-VF-0, -1, -1X, -2, -2X Series

RS-200C Schematic Diagram and other Service Information on RC-1206C, F, etc.



CRITICAL LEAD DRESS

Chassis RC-1206C, F

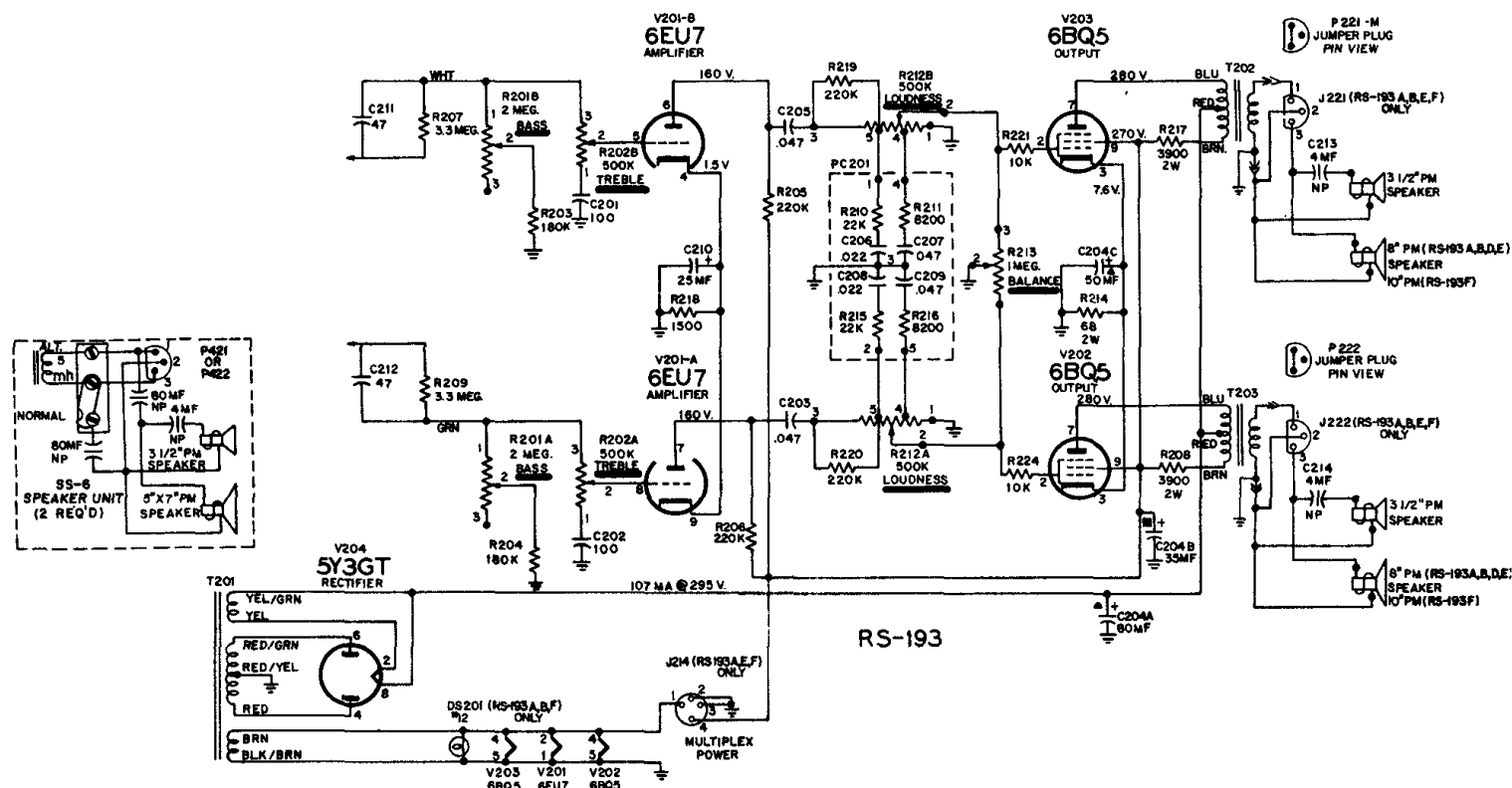
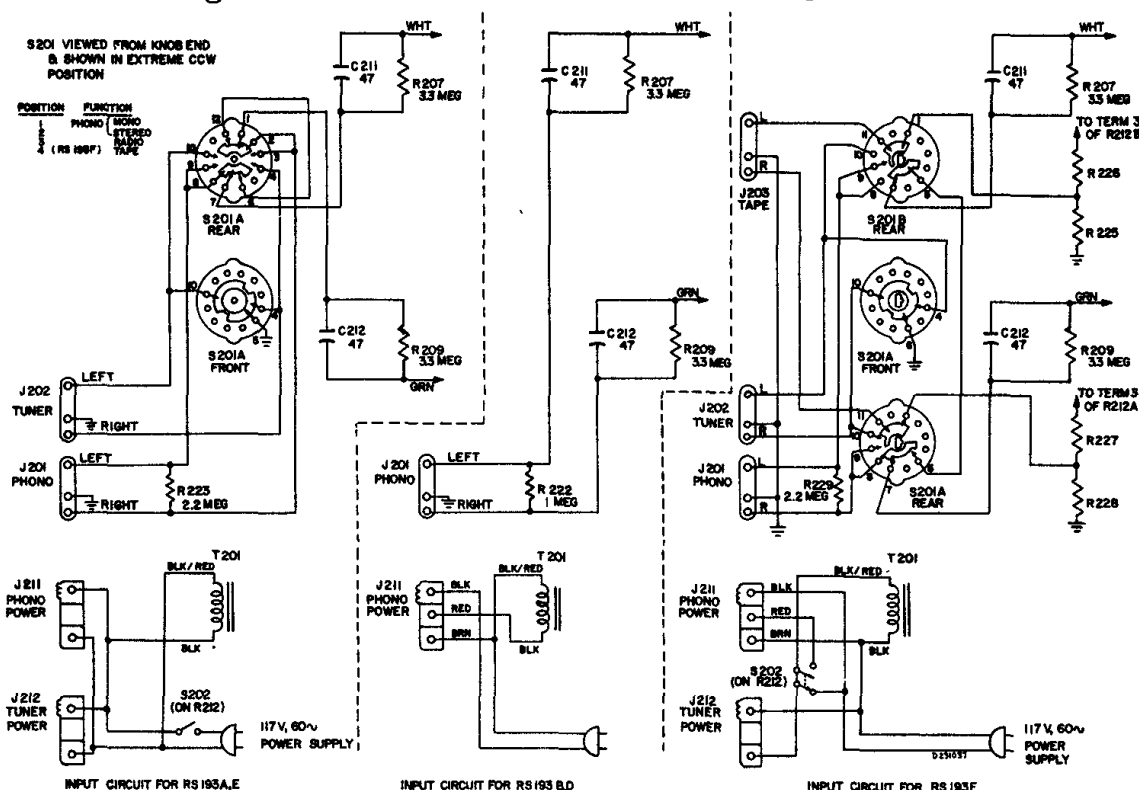
1. 10.7 mc IF grid and plate wiring must be short and dressed close to chassis.
2. Connect AVC side of AM antenna to top side of tuning gang, and dress clear of 12BE6 and 12BA6 tubes.
3. Dress heater lead which connects to pin 4 of 12BE6 along rear apron and to rear of 12BA6 socket.
4. B+ lead from pin 6 of 12BE6 to T4 must be short and dressed along chassis.
5. All RF bypass capacitor leads must be short and direct.
6. All heater leads must be close to chassis.

Chassis RS-193A, B, D, E, F

1. Dress all heater leads close to chassis and away from all grid connections.
2. Dress all green and white leads against front apron.
3. Dress all leads to pins 6 and 8 of V204(5Y3) close to chassis.
4. Dress all leads from T202 and T203 against back apron.
5. Dress R8 and R17 (3900Ω) close to back apron keeping leads as short as possible.
6. Bend terminal 2 away from terminals 1 and 3 of J211 on RS-193B amplifier.
7. Dress leads away from all power resistors.

3-VE-0, - 1, - 2 Series
3-VF-0, -1, -1X, -2, -2X Series

Circuit Diagrams of RS-193A, B, D, E, F, Amplifier Chassis



MODEL SERIES	TUNER CHASSIS	FM-STEREO CHASSIS	RECORD CHANGER	AMPLIFIER CHASSIS	JACKS PROVIDED FOR CONNECTION OF—				PILOT LAMP
					TUNER	TAPE	"TOTAL SOUND" SPKRS.	FM-STEREO	
3-VE-0	RP-216B-2	RS-193D
3-VE-1	RP-216B-2	RS-193B	Yes	Yes
3-VE-2	RP-216B-1	RS-193F	Yes	Yes	Yes	Yes
3-VF-06	RC-1206F	RS-200C	RP-216B-2	RS-193E	Equipd.	Yes	Equipd.
3-VF-1	RC-1206C,F	RP-216B-2	RS-193A	Equipd.	Yes	Yes	Yes
3-VF-1X	RC-1206F	RS-200C	RP-216B-2	RS-193A	Equipd.	Yes	Equipd.	Yes
3-VF-2	RC-1206C,F	RP-216B-1	RS-193F	Equipd.	Yes	Yes	Yes	Yes
3-VF-2X	RC-1206F	RS-200C	RP-216B-1	RS-193F	Equipd.	Yes	Yes	Equipd.	Yes