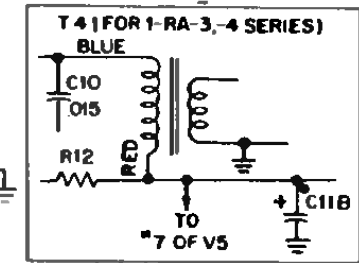
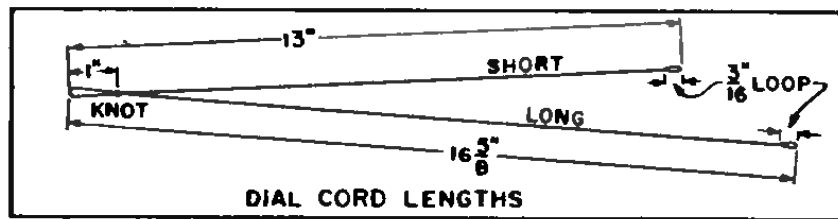
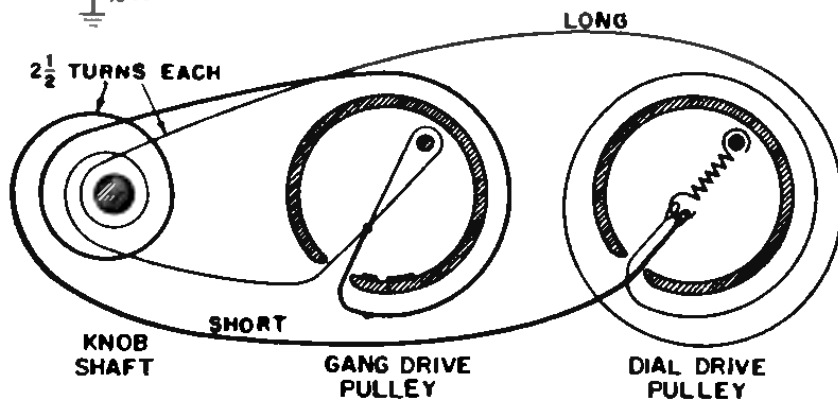
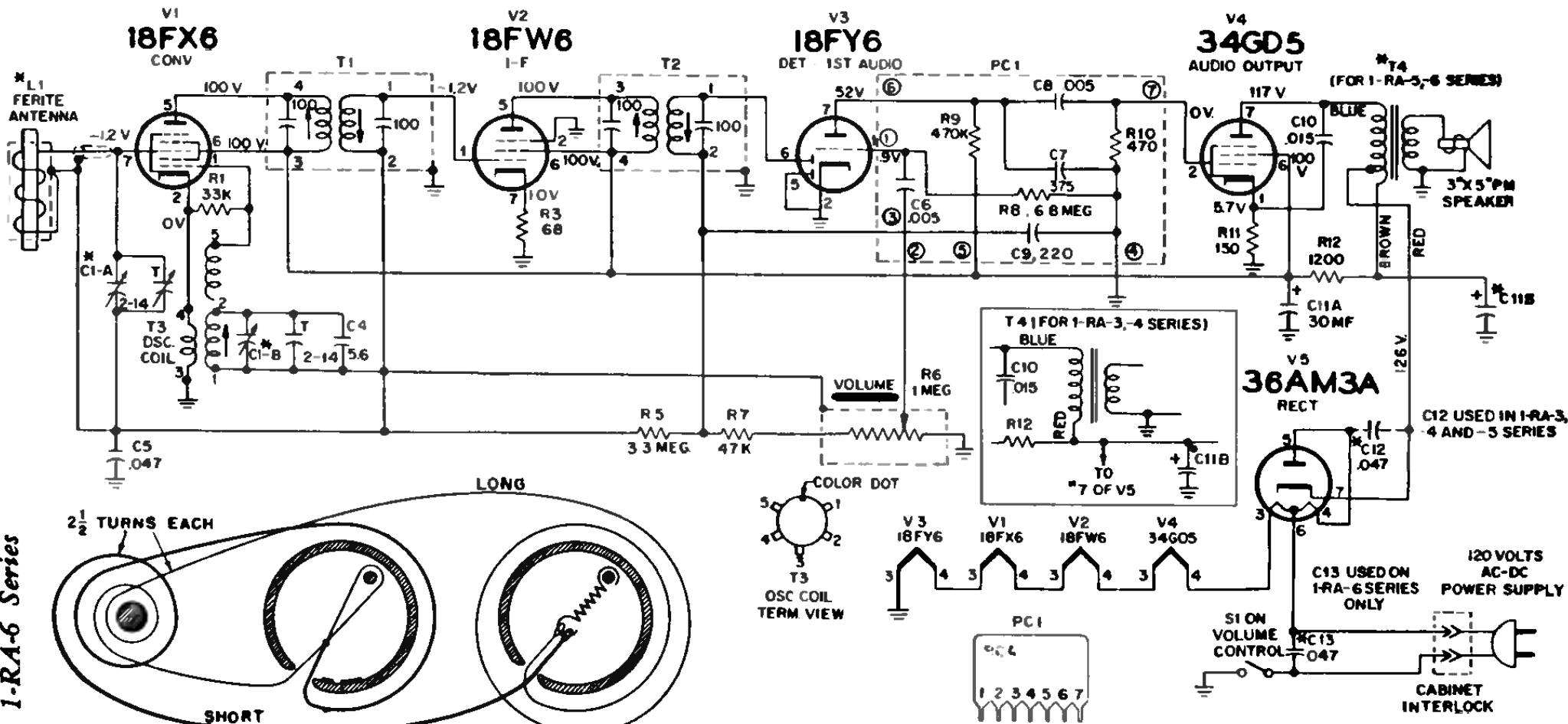


RCA Victor Models 1-RA-30, 1-RA-33, 1-RA-35, 1-RA-36, 1-RA-42, 1-RA-43, 1-RA-44, 1-RA-45, use Chassis RC-1202L; Models 1-RA-50, 1-RA-51, 1-RA-52, 1-RA-55, use Chassis RC-1202M; Models 1-RA-60, 1-RA-61, 1-RA-64, 1-RA-65, Chassis RC-1202N.



NOTE SCHEMATIC IS FOR MODEL 1-RA-6 COMPONENTS MARKED (M) VARY FOR OTHER MODELS SEE TABLE BELOW

	1-RA-3, 1-RA-4 (RC-1202L)	1-RA-5 (RC-1202M)	1-RA-6 (RC-1202N)
L1	FERRITE ROD (SHIELD ON FILTERAMIC ANT ONLY)	FERRITE ROD	"FILTERAMIC"
C1 A	13.4-312.9	13.4-312.9	15.2-396.4
C1-B	13-1278	13-1278	11.2-1184
C11B	50 MF	50 MF	70 MF
C12	.047	.047	NOT USED
C13	NOT USED	NOT USED	.047
T4	SEE INSERT	AS SHOWN	AS SHOWN

K=1000  
ALL RESISTANCE VALUES IN OHMS ALL CAPACITANCE VALUES LESS THAN 1.0 IN MF, VALUES ABOVE 1.0 IN MMF UNLESS OTHERWISE INDICATED  
VOLTAGES MEASURED TO COMMON NEGATIVE (⊥) WITH "VOLTOHMYST" AND SHOULD HOLD WITHIN ± 20% WITH 120 VOLT INPUT

Dial Cord Assembly for  
I-RA-5 Series and I-RA-6 Series