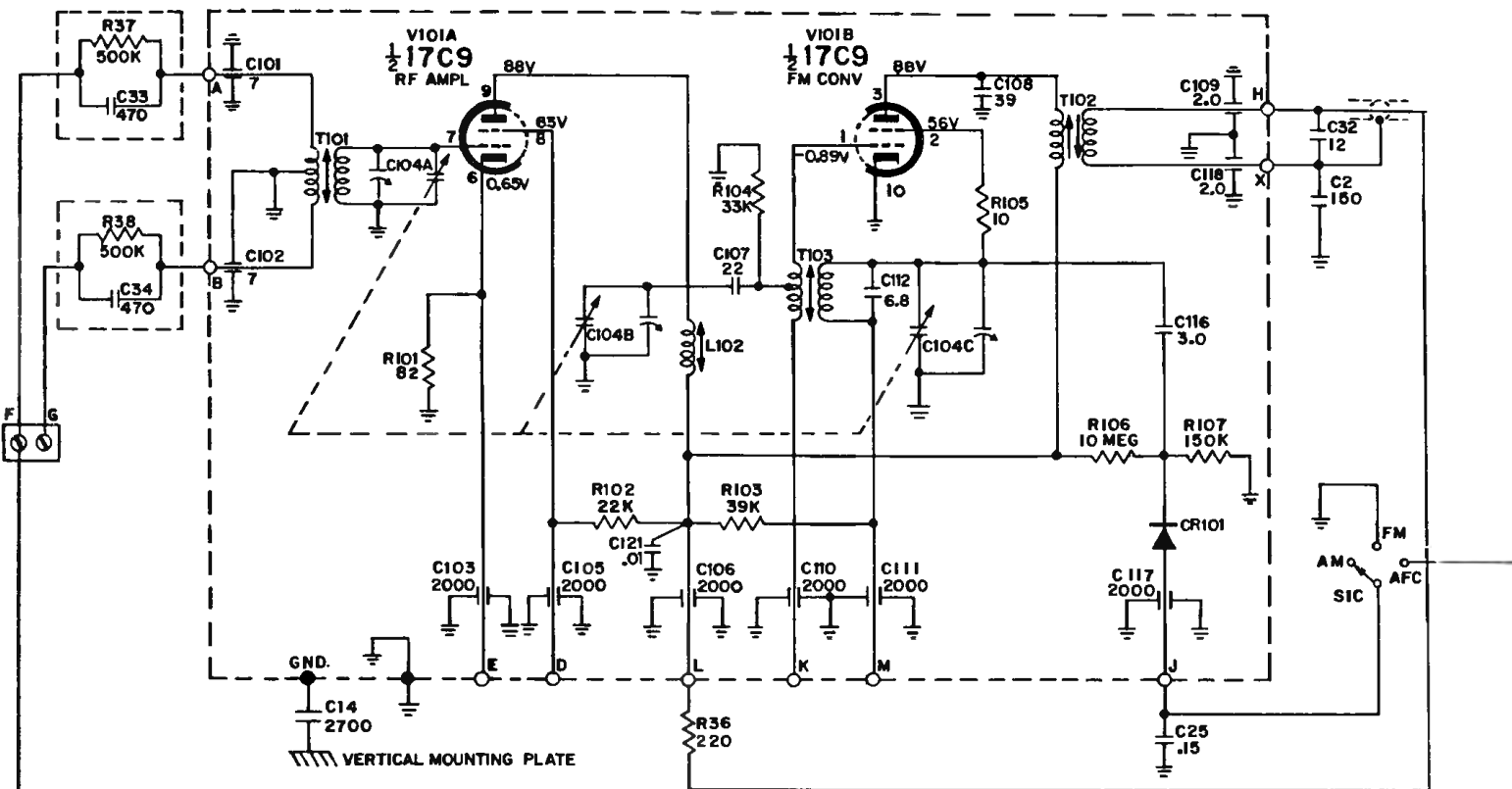


3RC4, 3RC5, 3RC7 Series, Chassis RC-1209A, -B, -C,  
Models 3RC41, 3RC42, 3RC44, 3RC51, & 3RC76.

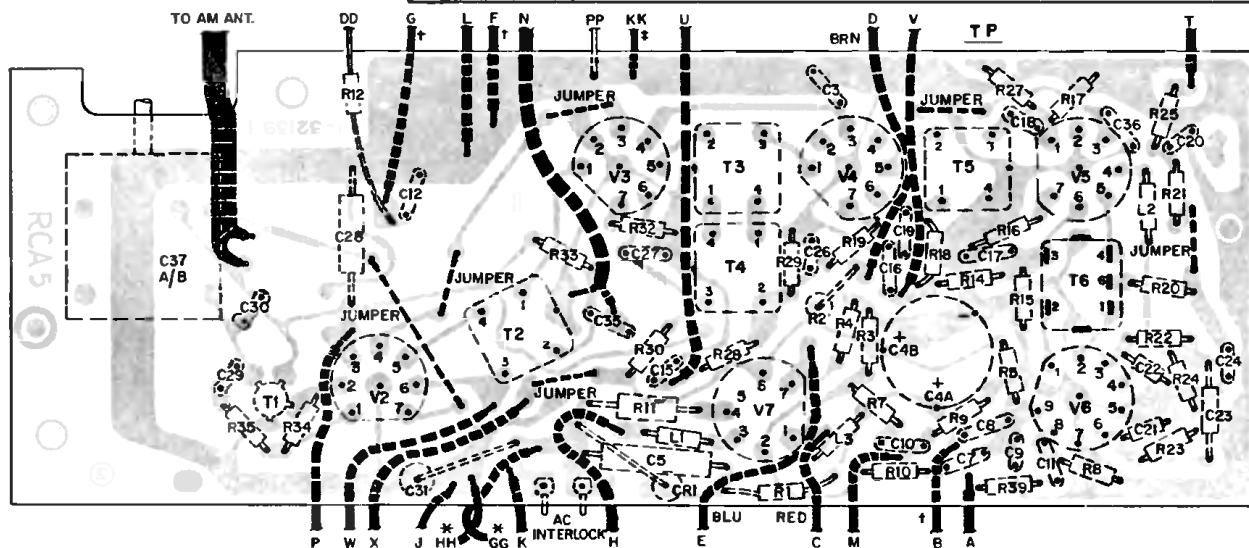
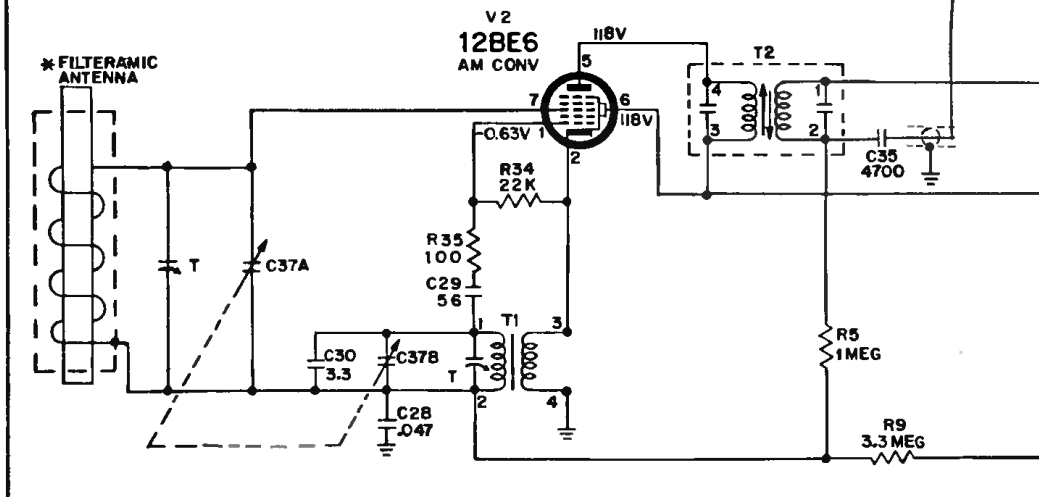


**K=1000.**

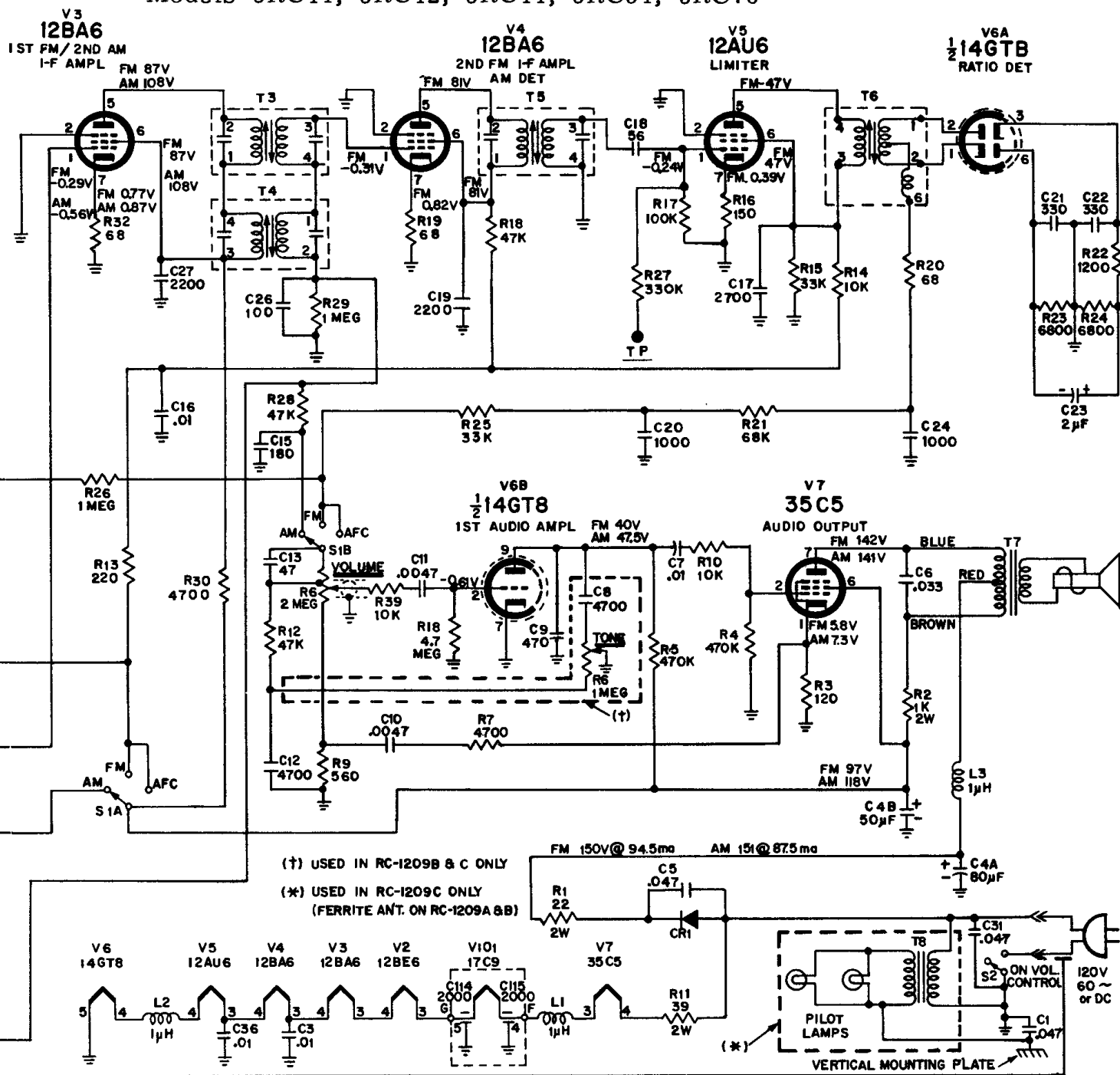
**ALL RESISTANCE VALUES IN OHMS.**

ALL CAPACITANCE VALUES LESS THAN 1.0  
IN  $\mu\text{F}$ ; VALUES ABOVE 1.0 IN  $\mu\text{M}$   
UNLESS OTHERWISE INDICATED.

VOLTAGES MEASURED TO COMMON NEG. (1)  
WITH "VOLTOHMYST" AND SHOULD HOLD  
WITHIN  $\pm 20\%$  WITH 120 VOLT INPUT.



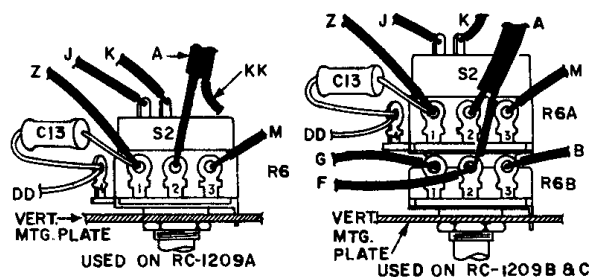
RCA Victor 3RC4, 3RC4, 3RC7 Series, Chassis RC-1209A, -B, -C,  
Models 3RC41, 3RC42, 3RC44, 3RC51, 3RC76



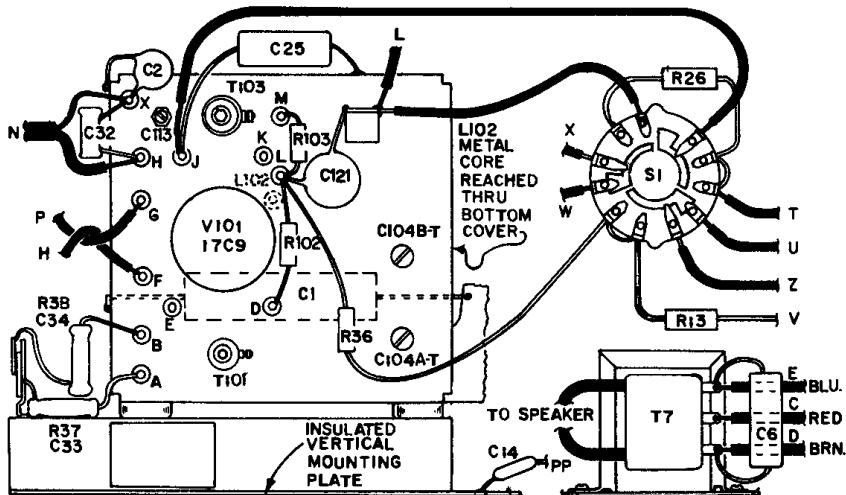
FREQUENCY RANGES	Tuning	IF
AM	530-1620 kc	455 kc
FM	87.5-108.5 mc	10.7 mc

POWER SUPPLY RATING

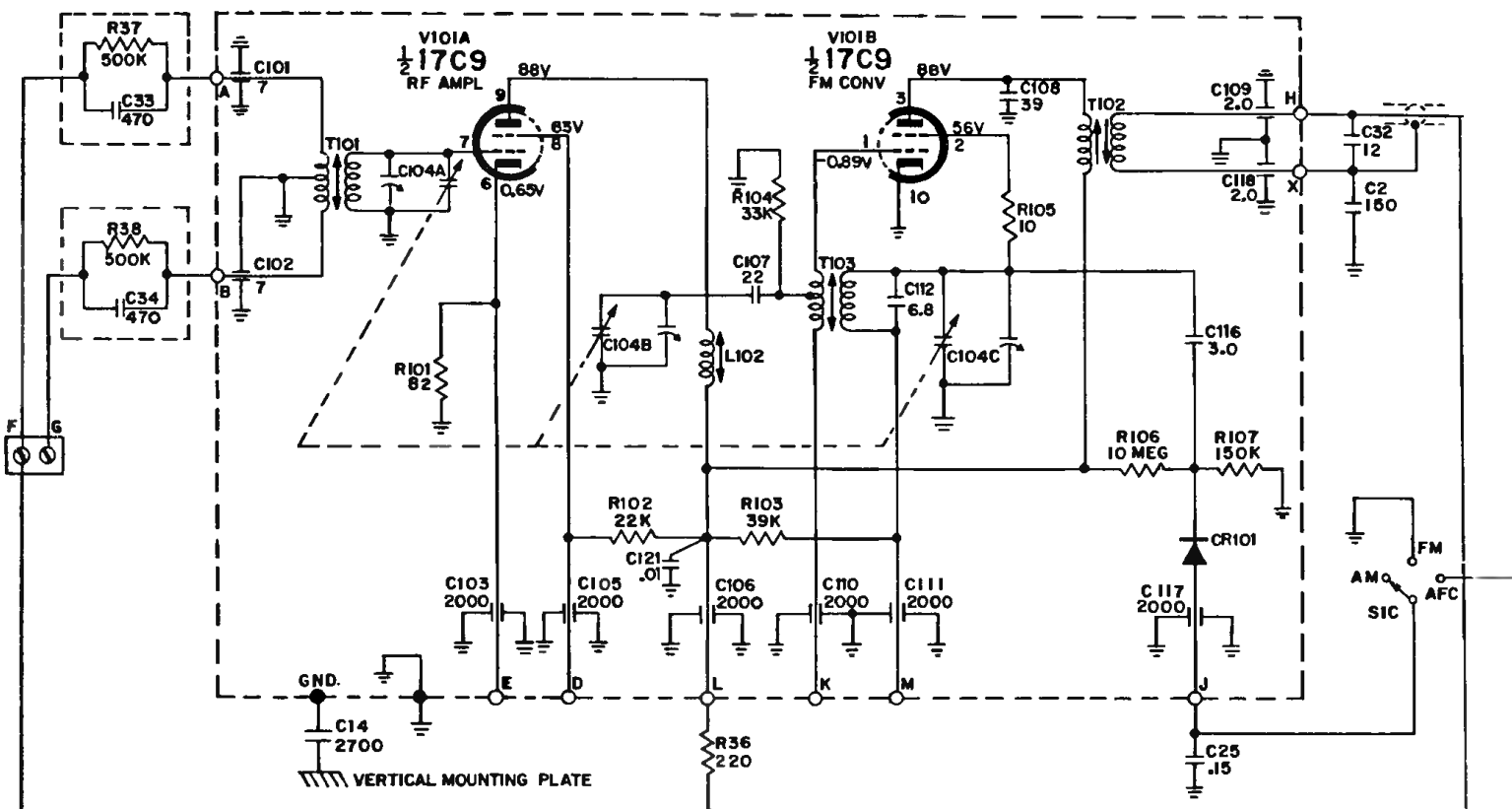
RC-1209A, B, 105-125V, 50-60 cy. or DC .....36 watts  
RC-1209C, 105-125V, 50-60 cycle only .....40 watts



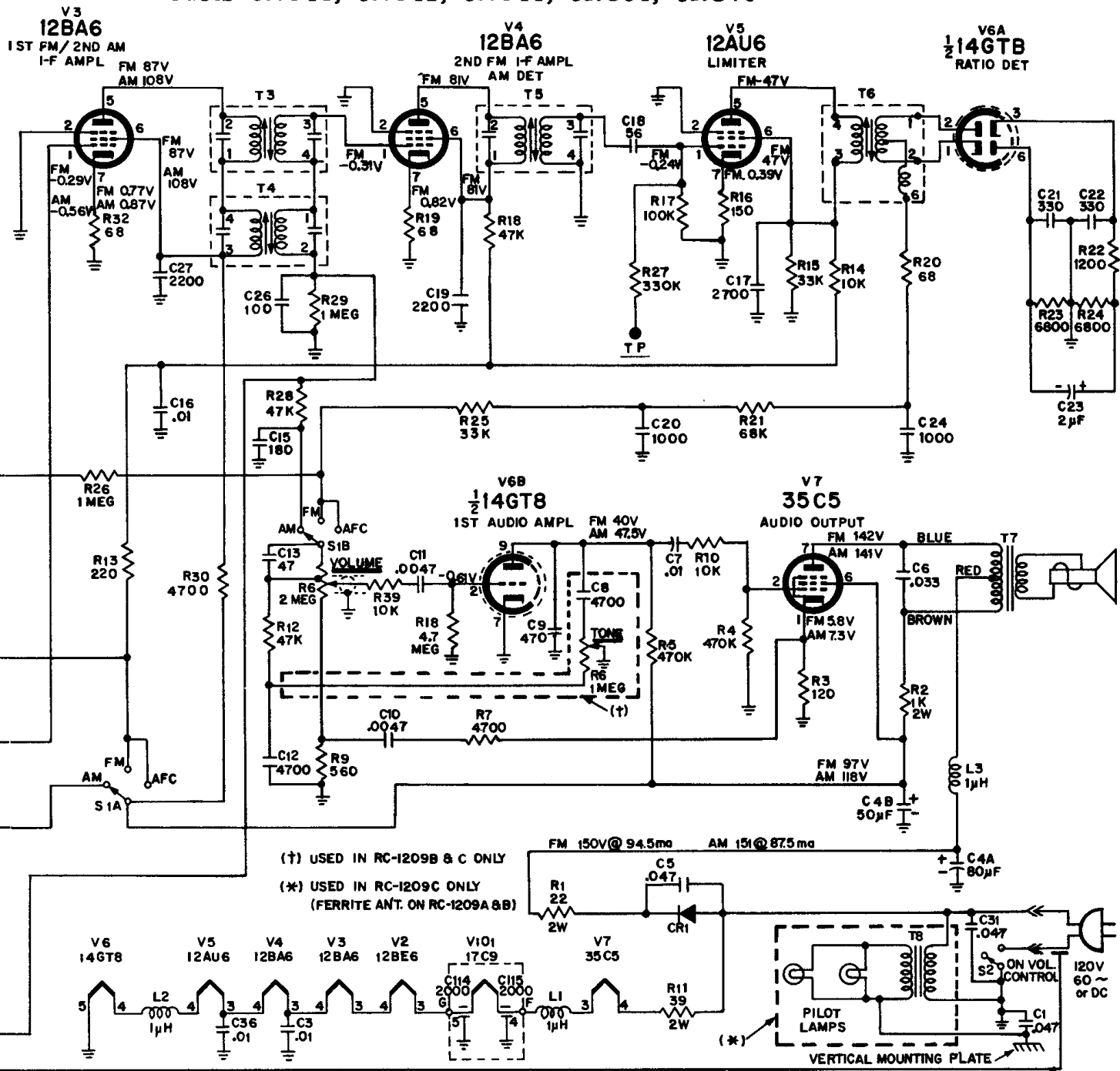
R6 & S2 Wiring



3RC4, 3RC5, 3RC7 Series, Chassis RC-1209A, -B, -C,  
Models 3RC41, 3RC42, 3RC44, 3RC51, & 3RC76.



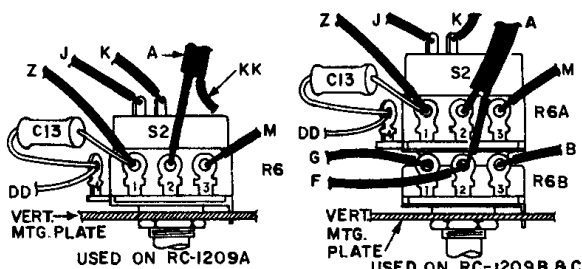
RCA Victor 3RC4, 3RC4, 3RC7 Series, Chassis RC-1209A, -B, -C,  
Models 3RC41, 3RC42, 3RC44, 3RC51, 3RC76



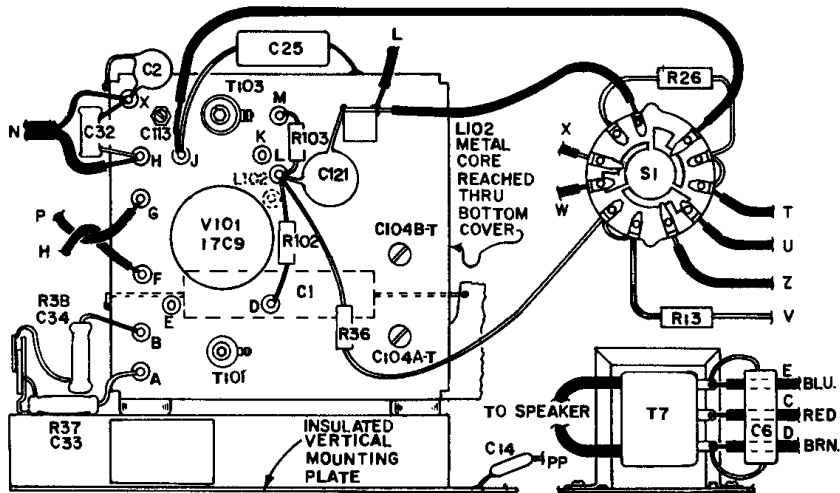
FREQUENCY RANGES	Tuning	IF
AM	530-1620 kc.	455 kc
FM	87.5-108.5 mc.	10.7 mc

POWER SUPPLY RATING

RC-1209A, B, 105-125V, 50-60 cy. or DC .....36 watts  
RC-1209C, 105-125V, 50-60 cycle only .....40 watts



R6 & S2 Wiring



FM Tuner Layout