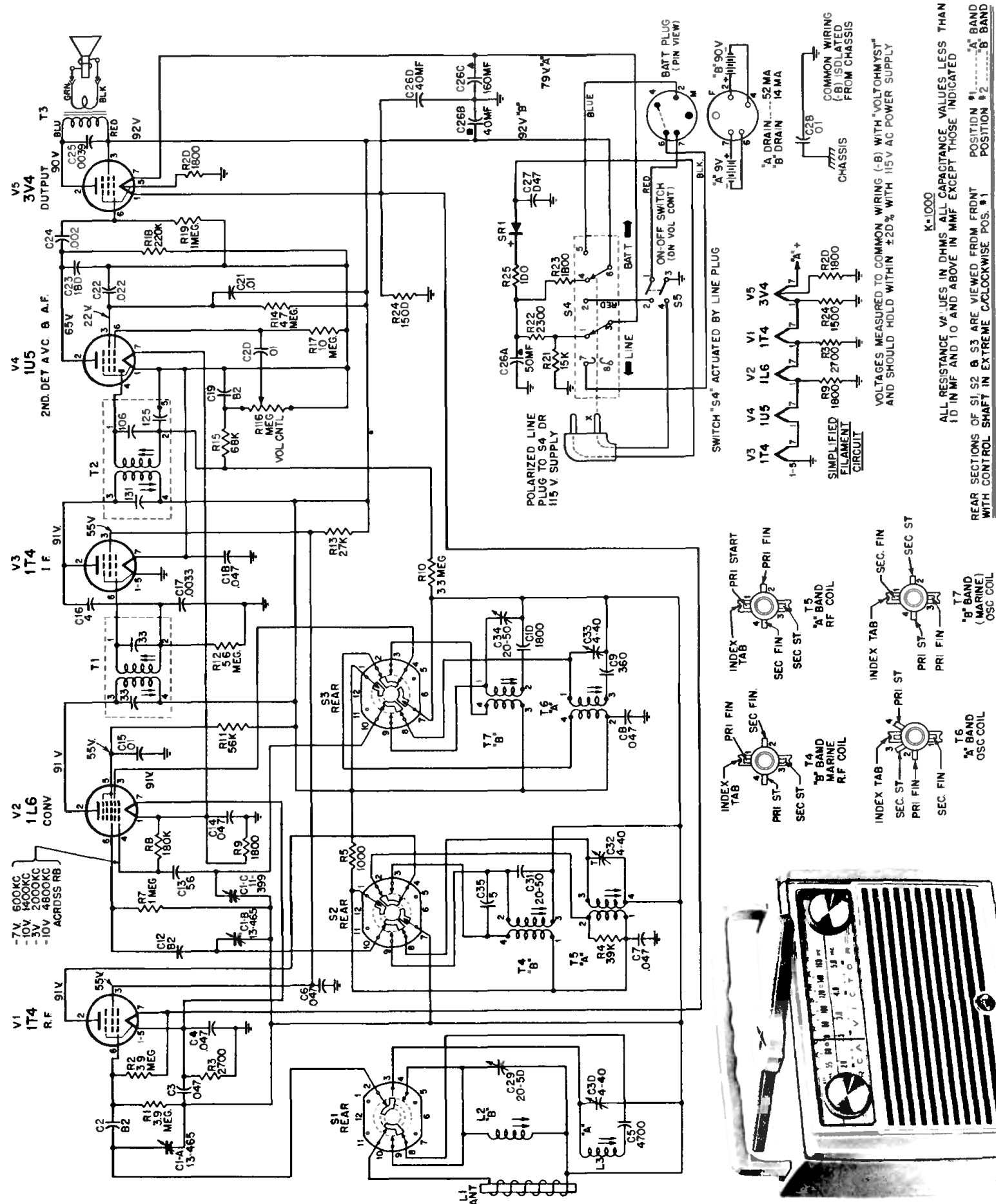




# MODEL 7-BX-9H

**Chassis No. RC-1163**



# RCA Victor Model 7-BX-9H, Chassis RC-1163

Step	Connect High Side of Sig. Gen. to —	Sig. Gen. Output	Dial Pointer Setting	Adjust for Max. Output
1	Disconnect loop—remove chassis—remove bottom cover.			
2	Pin #6 of 1T4 I.F. Amplifier thru .005 mf.	455 kc	Quiet point near 1600 kc "A" Band	2nd I.F. Trans. T2 Top & Bottom
3	Pin #6 of 1R5 Converter thru .005 mf.			1st I.F. Trans. T1 Top & Bottom
4	Replace bottom cover and connect loop. Place loop in the same position in relation to chassis as when the receiver is fully assembled.			
5	Short wire placed near antenna for radiated signal	1620 kc	gang fully open "A" Band	Osc. trimmer C33
6		1400 kc	1400 kc signal "A" Band	Ant. and R.F. trimmers C30 and C32
7		600 kc	600 kc signal "A" Band	T5 R.F. core and T6 Osc. core alternately while rocking gang
8		Repeat Steps 5, 6 and 7		
9		5200 kc	gang fully open "B" Band	Osc. trimmer C34
10		4800 kc	4800 kc signal "B" Band	Ant. and R.F. trimmers C29 and C31
11		2000 kc	2000 kc signal "B" Band	T4 R.F. core and T7 Osc. core alternately while rocking gang
12	Repeat Steps 9, 10 and 11			
13	Reassemble chassis and antenna in cabinet. Check adjustment of C29 ("B" Ant.) at 4800 kc and C30 ("A" Ant.) at 1400 kc.			

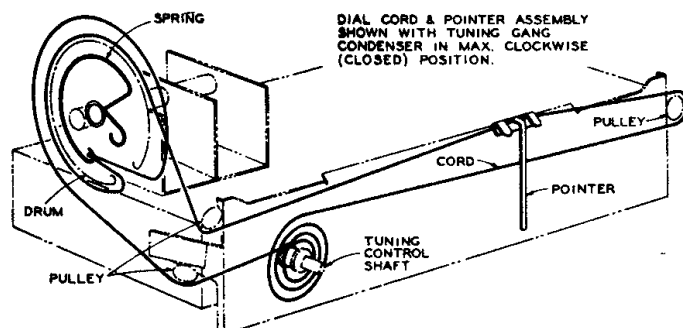
## Alignment Procedure

**Test Oscillator**—For all alignment operations, connect the low side of the test oscillator to the receiver chassis and keep the oscillator output as low as possible to avoid AVC action.

Battery operation of the receiver is preferable during alignment; on AC operation an isolation transformer (117v./117v.) may be necessary if the test oscillator is also AC operated.

## Critical Lead Dress

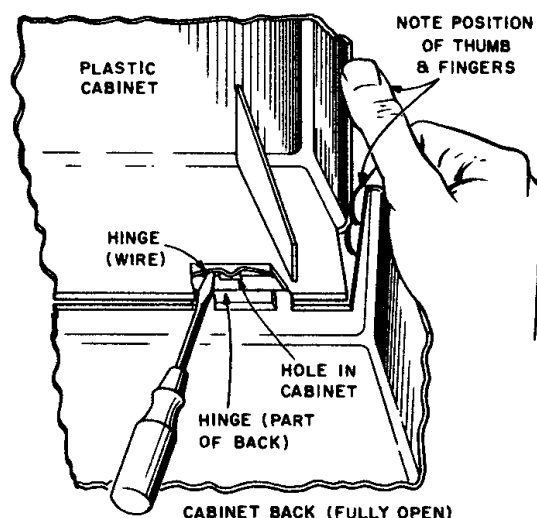
1. Dress all filament leads next to chassis.
2. Use short pigtail leads on components to V1, Pin 6.
3. Dress gang leads direct to avoid excess lead length.
4. Dress capacitor C17 across V3 socket to act as shield for C21.
5. Dress capacitors C3, C4 and C6 down to base between V1 socket and V2 socket, use short leads.
6. Use short pigtail lead on C16 to V3-2 and dress away from Pin 6.
7. Dress capacitor C24 down to base.
8. Twist loop antenna leads and dress into slots provided in cabinet—allow sufficient slack to permit rotation of antenna.
9. The "A" band series ant. coil (L3) and "B" band shunt ant. coil (L2) should be dressed away from chassis.



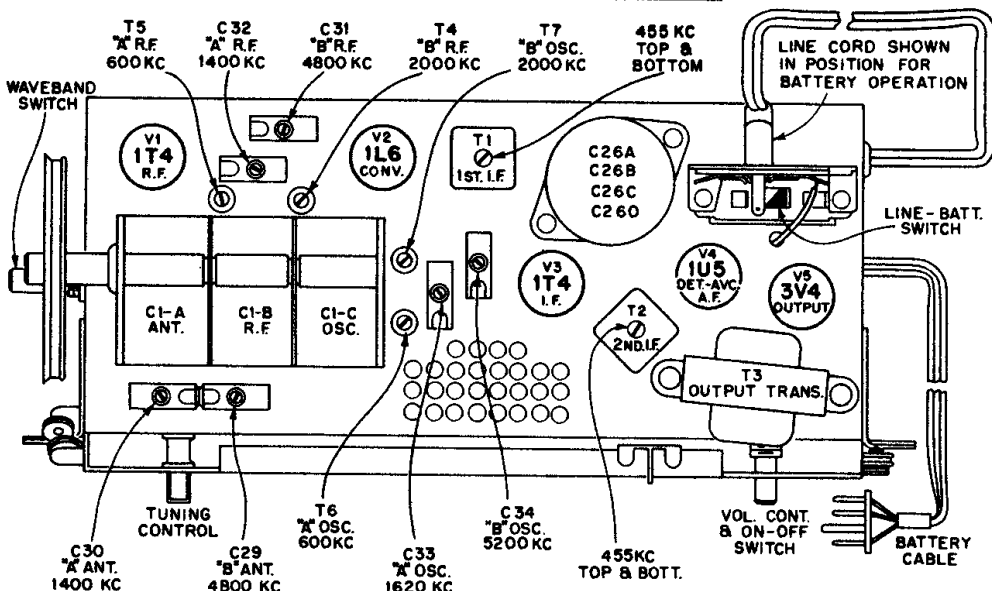
Dial-Indicator and Drive Mechanism

## Chassis Removal

1. Remove control knobs (pull off).
2. Unsolder the two loop antenna leads.
3. Pull out battery and disconnect battery plug.
4. Remove the four chassis mounting screws, two at front sides and two at top rear.



Removal of Cabinet Back



Tube and Trimmer Locations