

MODEL R-70 RCA-VICTOR CO., INC.

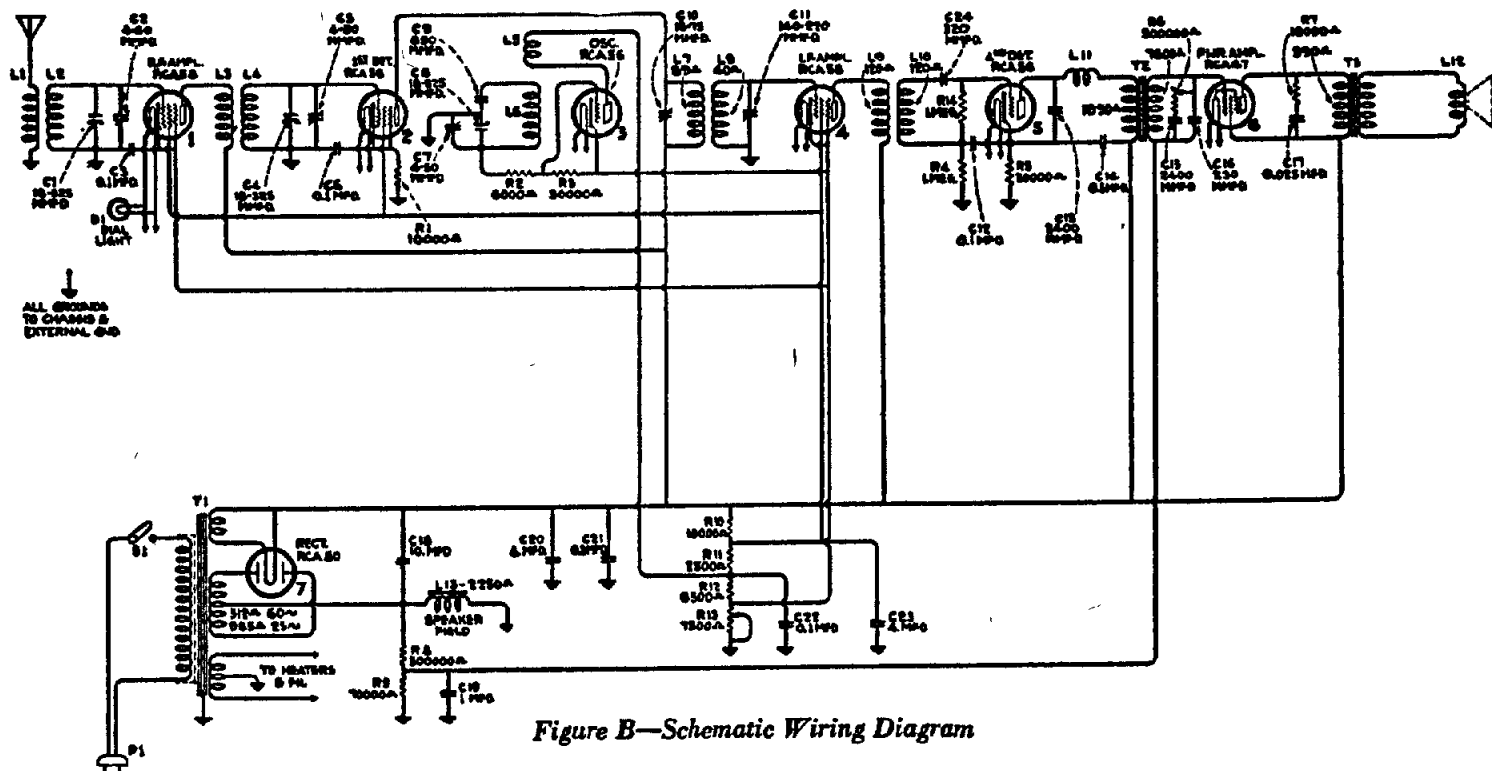


Figure B—Schematic Wiring Diagram

RADIOTRON SOCKET VOLTAGES

All Voltages Measured at Maximum Volume with no Signal Impressed on Input. 120 Volt 60 Cycle A. C. Source Used

Radiotron No.	Cathode or Filament to Control Grid Volts	Cathode or Filament to Screen Grid Volts	Cathode or Filament to Plate Volts	Plate Current M. A.	Heater or Filament Volts
1. R. F. RCA-58	4.5	100	245	6.0	2.37
2. Oscillator RCA-56	—	—	60	4.5	2.37
3. First Detector RCA-58	13.0	90	235	1.3	2.37
4. I. F. RCA-58	4.5	100	245	6.0	2.37
5. Second Detector RCA-56	18.0	—	230	1.0	2.37
6. Power RCA-247	16.5	250	240	30.0	2.37
7. Rectifier UX-280	370 Volts R. M. S. each plate			70.0	5.0

