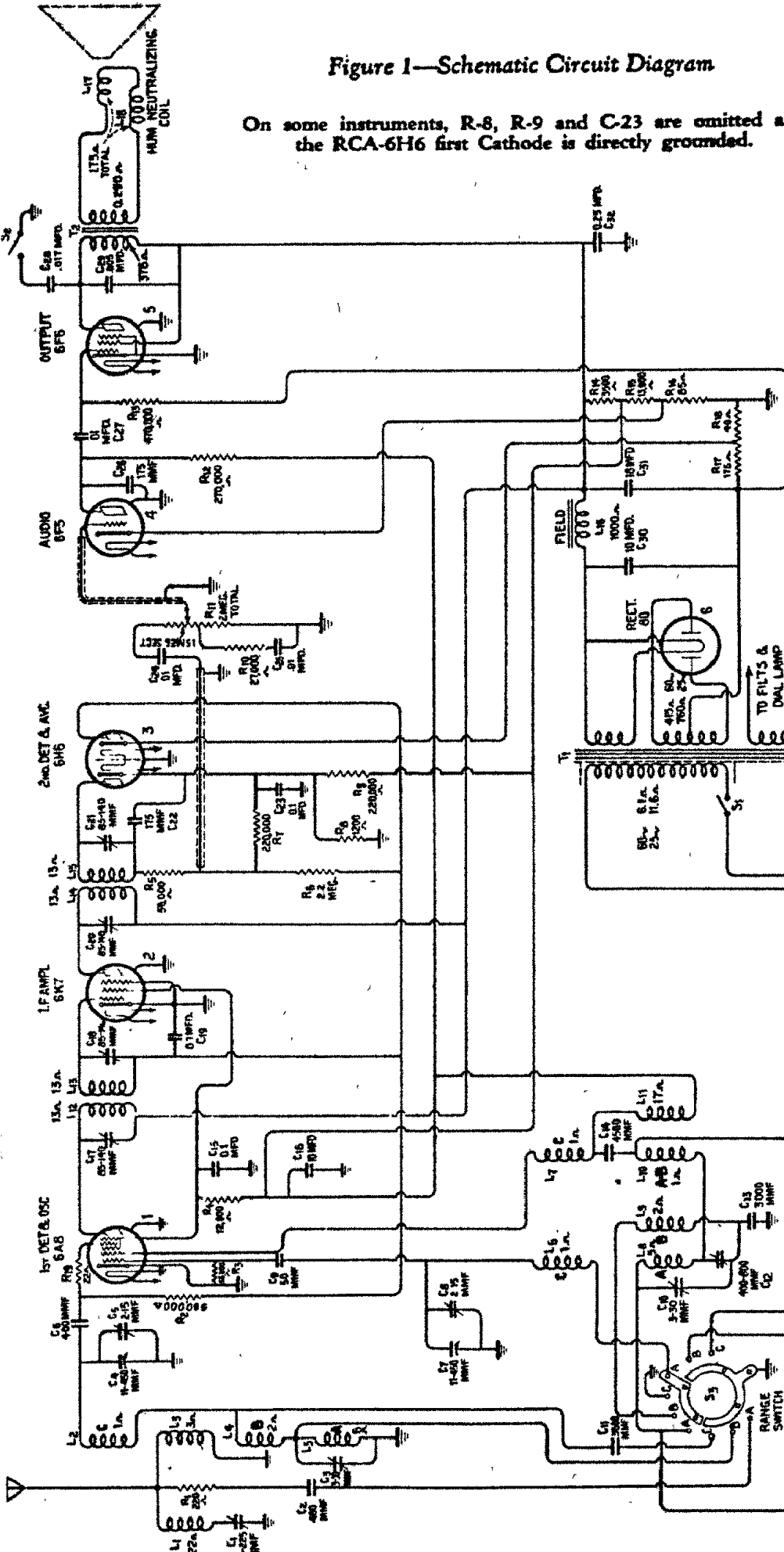


Figure 1—Schematic Circuit Diagram

On some instruments, R-8, R-9 and C-23 are omitted and the RCA-6H6 first Cathode is directly grounded.

IF PEAK 460 KC



# FREQUENCY RANGES

Band A.....	540—1625 kc.
Band B.....	1625—5700 kc.
Band C.....	5700—18000 kc.

# Intermediate Frequency.....

# POWER SUPPLY RATINGS

Rating A.....	105—125 volts, 50—60 cycles, 85 watts
Rating B.....	105—125 volts, 25—60 cycles, 90 watts
Rating C.....	100—130/140—160/195—250 volts, 40—60 cycles, 85 watts

# POWER OUTPUT

Undistorted.....	2.0 watts
Maximum.....	4.5 watts

# ALIGNMENT FREQUENCIES

Band A.....	600 kc. (osc.), 1400 kc. (osc., ant.)
Band B.....	None required
Band C.....	18000 kc. (osc., ant.)

# Intermediate Frequency.....

# POWER SUPPLY RATINGS

Rating A.....	105—125 volts, 50—60 cycles, 85 watts
Rating B.....	105—125 volts, 25—60 cycles, 90 watts
Rating C.....	100—130/140—160/195—250 volts, 40—60 cycles, 85 watts

# LOUDSPEAKER

Type.....	Electrodynamic
Voice Coil Im dance.....	2.25 ohms—400 cycles