

# RCA VICTOR

## 55F and CV-42 Electrifier

Chassis No. RC-1004E; Mfr. No. 274

### Alignment Procedure

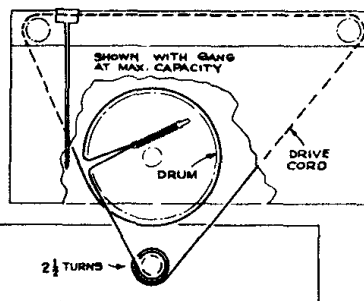
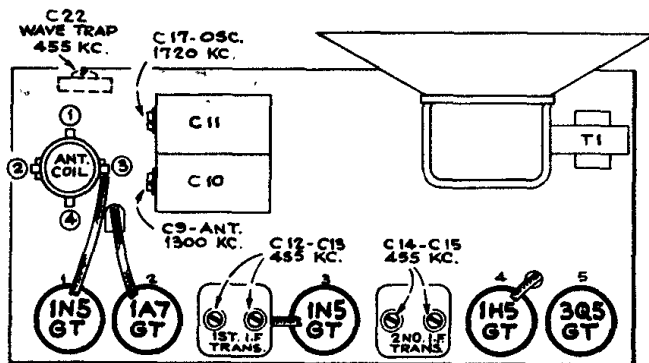
**Cathode Ray Alignment** is the preferable method. Connections for the oscillograph are shown in the diagram.

**Output Meter Alignment.**—If this method is used, connect the meter across the voice coil and turn the receiver volume control to maximum.

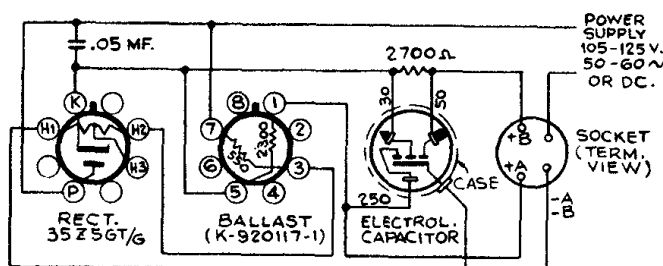
**Test Oscillator.**—For all alignment operations, connect the low side of the test oscillator to the receiver chassis, and keep the output as low as possible to avoid AVC action.

**Pre-Setting Dial.**—With gang condenser in full mesh, the pointer should be set at the left-hand end dial calibration mark.

Step	Connect high side of the test oscillator to—	Tune test osc. to—	Turn radio dial to—	Adjust the following for maximum peak output
1	I-F grid in series with .01 mfd.	455 kc	Quiet point between 550 and 750 kc	C14, C15 (2nd I-F Trans.)
2	1A7GT grid in series with .01 mfd.			C12, C13 (1st I-F Trans.)
3	Antenna terminal in series with 200 mmfd.	1,720 kc	Tuning condenser rotor plates all out	C17 (osc.)
4		1,300 kc	1,300 kc signal	C9 (ant.)
5		455 kc	Quiet point between 550 and 750 kc	Adjust C22 for minimum output on strong 455 kc signal



Dial Cord Assembly



Electrifier Schematic

