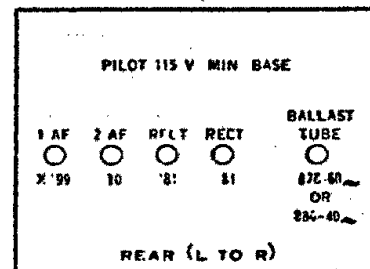


MODEL AP-995
MODEL AP-952
MODEL AP-997-C
MODEL 12-25 Tuscany
MODEL 8-60

R. C. A. VICTOR CO., INC.

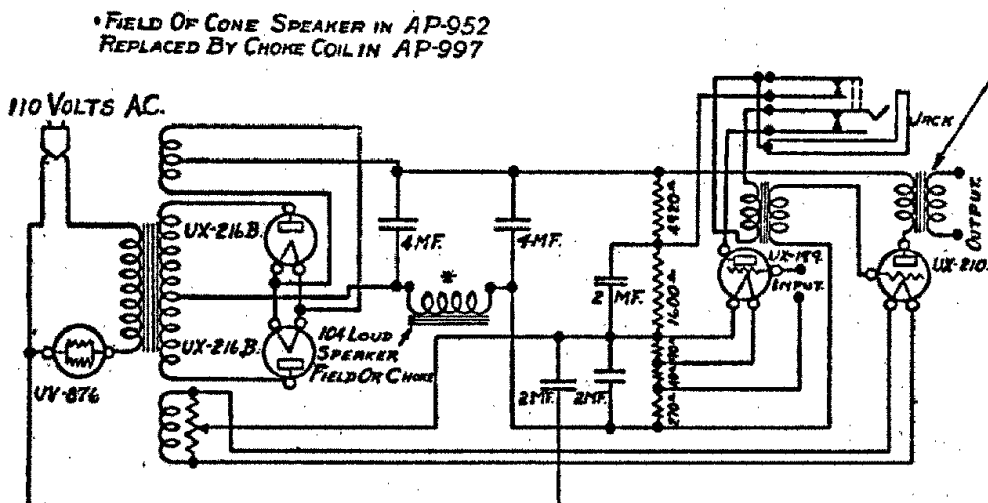
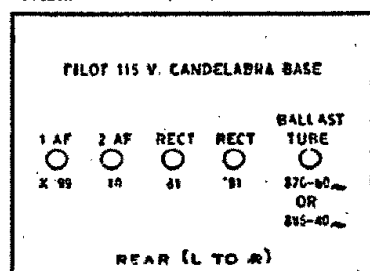
NOTE-AP-997 HAS 1:1 OUTPUT TRANSFORMER. AP-952 HAS 25:1.

Model Electrola Tuscany (1926)



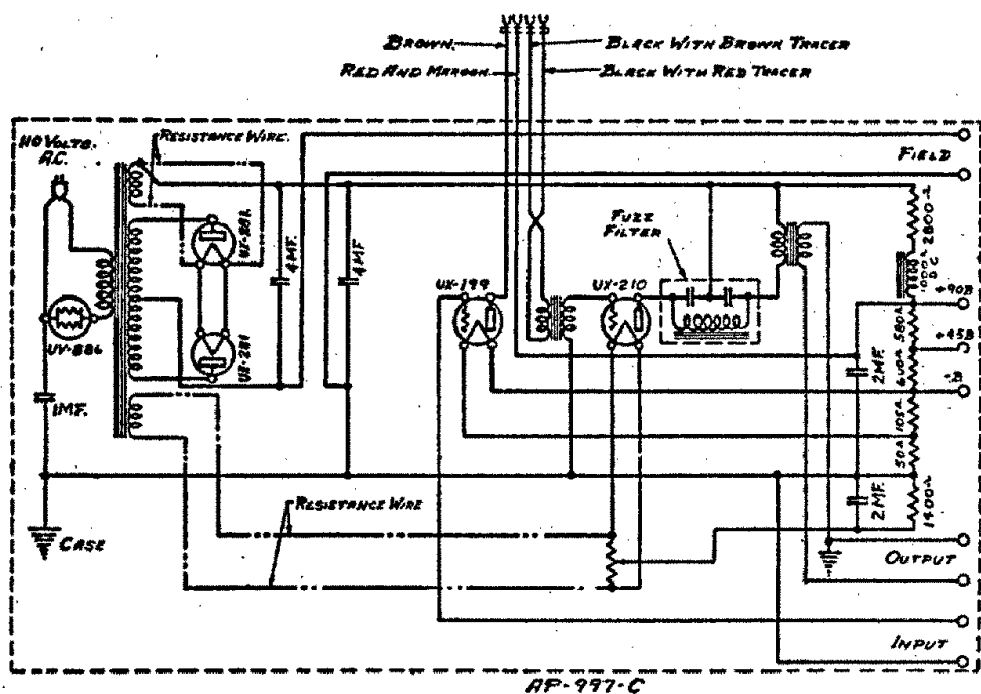
Victor designation RPA 5
Used on 12-25, Tuscany

Models Victors 8-60, 12-2, 12-25 (1926)



Wiring Diagram AP 952, and AP 997

Victor designation RPA-5 Spec.
Used on 8-60.



Wiring Diagram of Power-Amplifier Unit AP-997-C

Used on Victor 12-15.

- The AP-947-X differs from the AP-947 in that it has a 25 to 1 output transformer and no filter choke.
- The AP-997-X differs from the AP-997 in this same manner.
- The AP-952-V differs from the AP-952 only in the substitution of a terminal strip for the input jack.
- The AP-997-Y differs from the AP-997 in that it has a 25 to 1 output transformer, a fuzz filter, a terminal strip instead of a jack, and no filter choke.
- The AP-947-A, AP-951-B, and AP-997-A differ from the AP-947 in that they require the UX-281 and UX-886 Radiotrons instead of the UX-216-B and UX-876; a 25 to 1 output transformer is used; the resistors are of different values; resistance wire is used in the UX-281 and UX-210 filament leads; and the filter choke instead of being connected in the filter circuit is used in the voltage drop circuit to stabilize the amplifier.
- The AP-997-C differs from the AP-997 in the same respects as described in (e) above.

The list below for Victor power-amplifier units contained in new instruments since June 1, 1927 gives the RCA symbol number, the Victor part number, and the instrument on which each unit is used.

RCA SYMBOL	VICTOR PART NO.	USED ON
AP-947-X	20652	9-40*
AP-997-X	18575	10-51
AP-952-Y	18569	10-70
AP-997-Y		
AP-947-A	18891	9-25
AP-997-A	18574	9-55
AP-951-B		
AP-997-C	20564	12-15