

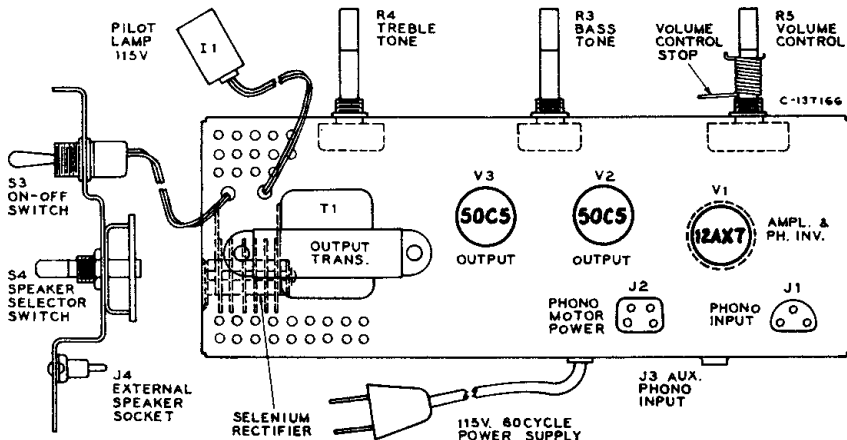
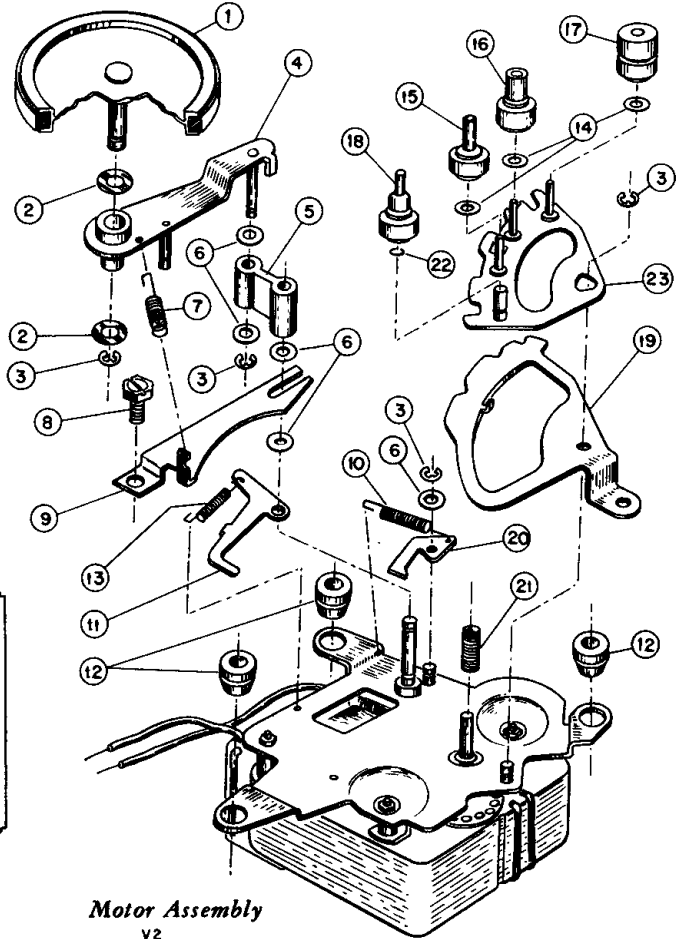
MOTOR ASSEMBLY

ILL. NO.	STOCK NO.	DESCRIPTION
1	102968	Wheel—Idler wheel
2	78509	Washer—Fibre washer (.015" thk. x 31/64" O.D. x 7/32" I.D.)
3	78652	Washer—"C" type retaining washer
4	102969	Plate—Idler plate assembly
5	78517	Link—Idler link
6	78515	Washer—Metal washer
7	78512	Spring—Idler spring
8	Screw—Hold down plate mounting screw (#6-32)
9	102970	Plate—Hold down plate
10	78520	Spring—Shifter latch spring
11	78518	Arm—Pulley plate latch arm
12	78514	Grommet—Motor mounting grommet
13	78519	Spring—Pulley latch spring
14	78528	Washer—Speed pulley fibre washer
15	78525	Pulley—33 1/3 RPM pulley assembly
16	78526	Pulley—45 RPM pulley assembly
17	78527	Pulley—78 RPM pulley assembly
18	102972	Pulley—16 2/3 RPM pulley assembly
19	102974	Lever—Speed shift lever
20	78521	Lever—Latch arm lever
21	79967	Sleeve—Sleeve pulley for 50 cycle operation
21	78522	Sleeve—Sleeve pulley for 60 cycle operation
22	102973	Retainer—Pulley retainer "C" ring
23	102971	Plate—Speed pulley mounting plate (less pulleys)
	102541	Motor—4 Speed motor assembly complete,

RCA VICTOR

MODEL HRD-2

Chassis No. RS-158J
Record Player Mechanism No. RP-200-2



Motor Assembly

