

RCA Models 526, 527

Output Meter Alignment.—If this method is used connect the meter across the voice coil and turn the receiver volume control to maximum.

Electronic Voltmeter.—The electronic voltmeter in the Chanalyst or VoltOhmyst provides an unexcelled output indicator. It should be connected to the AVC bus.

Test Oscillator.—Connect the low side of the test oscillator to the receiver chassis through a .01 mfd. capacitor. When the electronic voltmeter is used as an alignment indicator the output of the test oscillator should be adjusted to produce several volts of AVC. With the output meter alignment method the test oscillator output should be kept as low as possible.

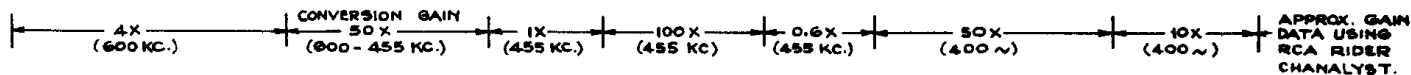
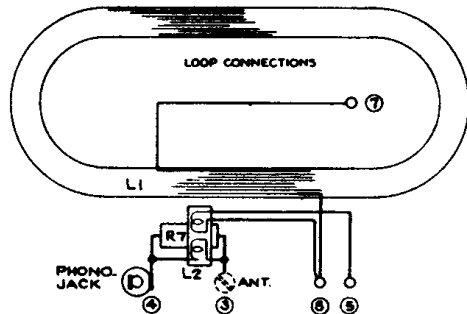
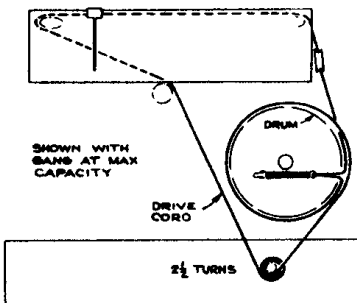
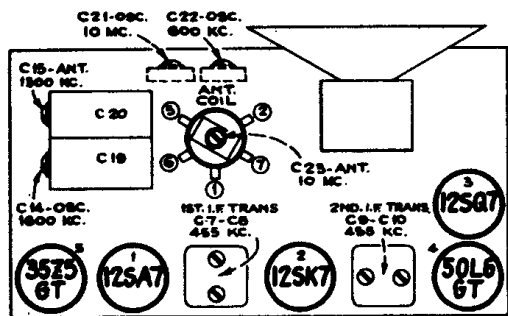
Calibration Scale.—The glass tuning dial may be easily removed from the cabinet and temporarily attached to the dial backing plate for quick reference during alignment.

Power-Supply Polarity.—For operation on d-c, the power plug must be inserted in the outlet for correct polarity. If the set does not function, reverse the plug. On a-c, reversal of the plug may reduce hum.

Steps	Connect the high side of test-oscillator to—	Tune test-osc. to—	Turn radio dial to—	Adjust the following for max. peak output—
1	12SK7 grid in series with 0.1 mfd.	455 kc	Quiet Point at 1,600 kc end of dial	C10, C9 2nd I-F Transformer
2	12SA7 grid in series with 0.1 mfd.			C8, C7 1st I-F Transformer
3	Antenna term. in series with 47 mmf.	10 mc*	10 mc	C21 (osc.)* C23 (ant.)
4	Antenna term. in series with 200 mmfd.	1,600 kc	1,600 kc	C14 (osc.)
5	Radiation Loop	1,300 kc	Resonance on Signal	C15 (ant.)
6	Radiation Loop	600 kc	600 kc	C22 Osc. Rock in

* It is recommended that this step be repeated using a received station of known frequency.

** Use minimum capacity if two peaks can be obtained.



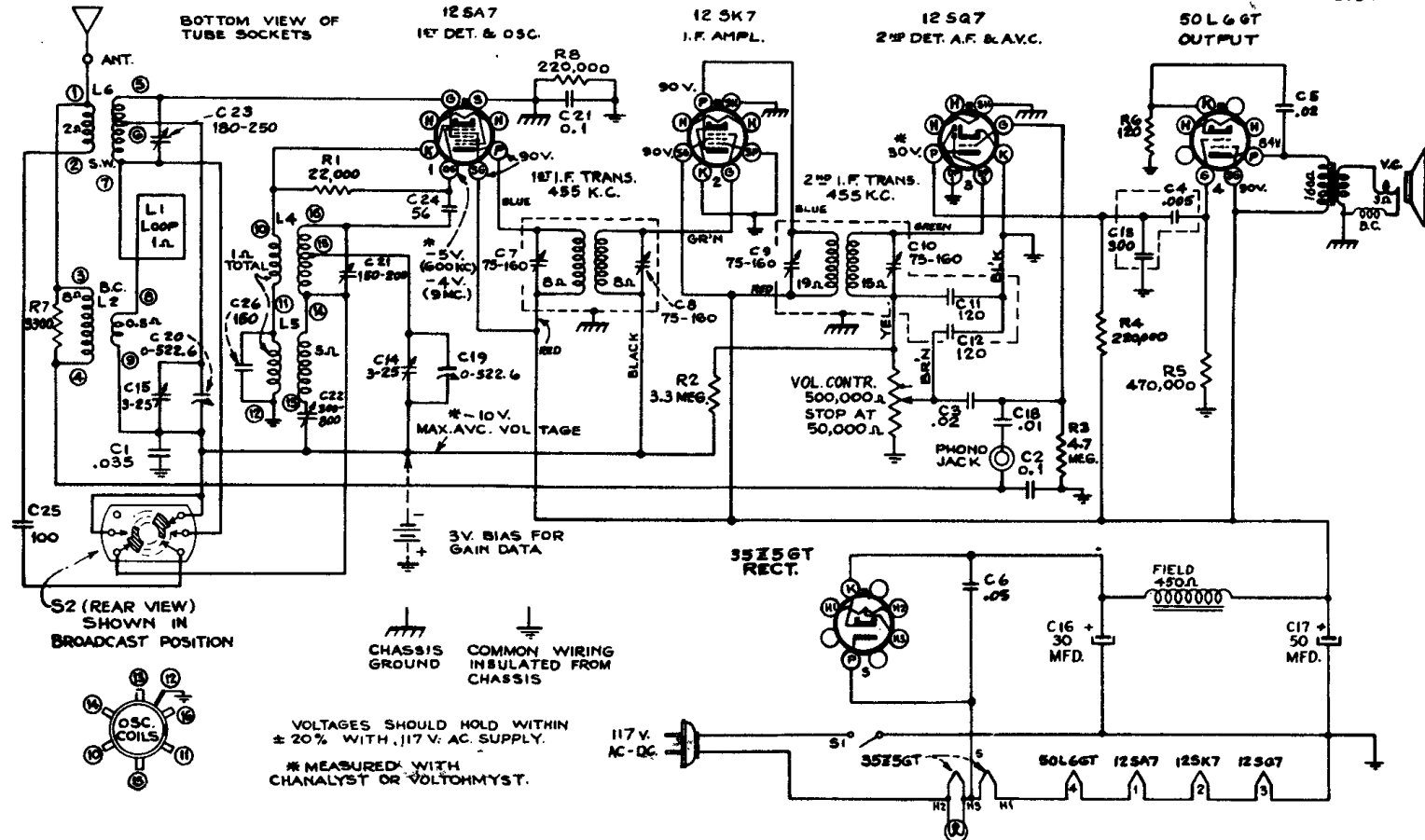
BOTTOM VIEW OF TUBE SOCKETS

12SA7 1ST DET. & OSC.

12SK7 I.F. AMPL.

12SQ7 2ND DET. A.F. & A.V.C.

50L6GT OUTPUT



VOLTAGES SHOULD HOLD WITHIN $\pm 20\%$ WITH 117 V. AC SUPPLY.
* MEASURED WITH CHANALYST OR VOLTOMYST.