

RCA VICTOR

64F1, 64F2, 64F3

(RC-1037) (RC1037) (RC1037A)

and CV45 ELECTRIFIER

(R. R. 1001) Mfr. No. 274

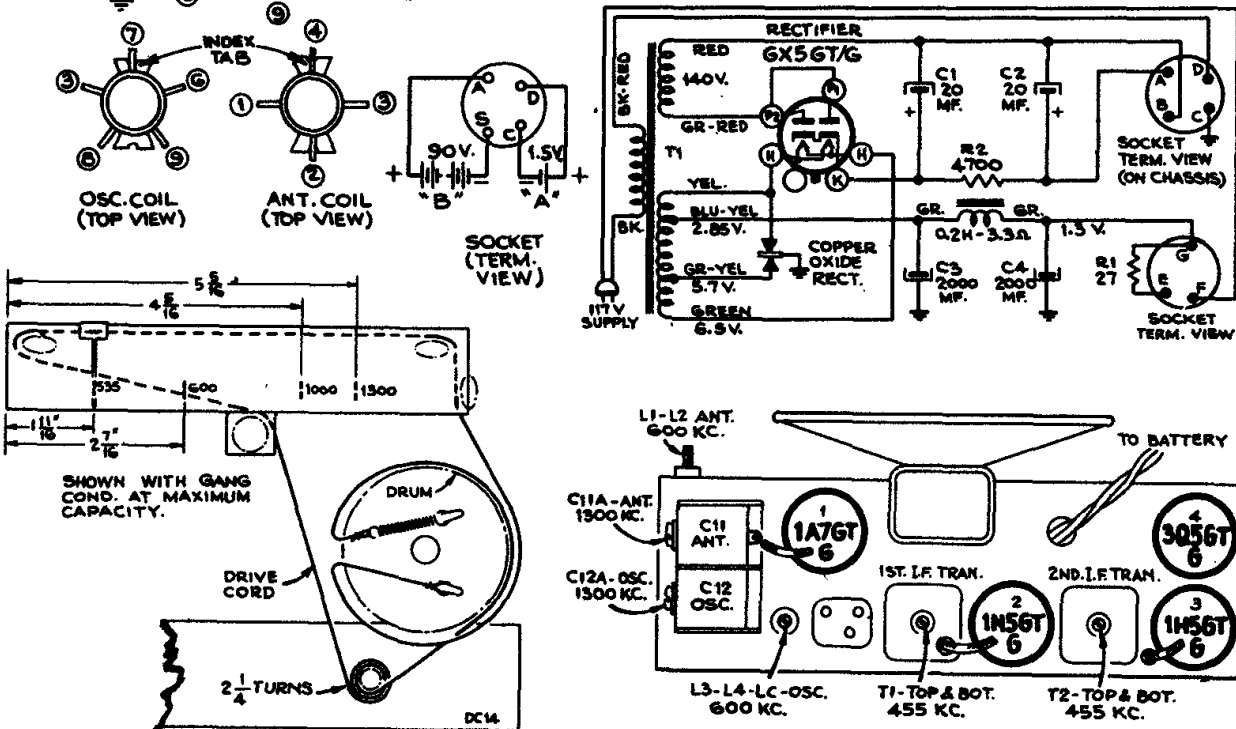
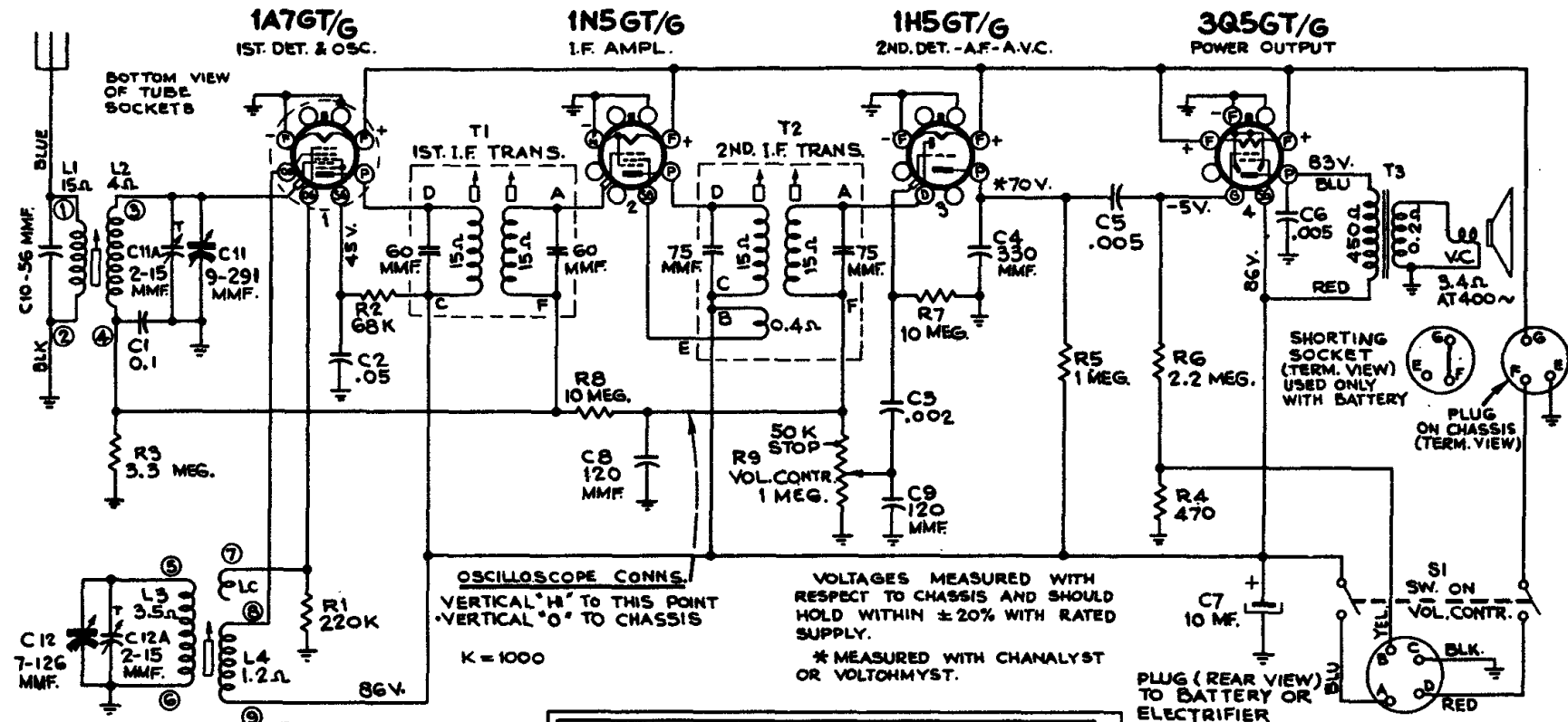
Alignment Procedure

Cathode Ray Alignment is the preferable method. Connections for the oscillograph are shown in the diagram.

Output Meter Alignment.—If this method is used, connect the meter across the voice coil and turn the receiver volume control to maximum.

Test Oscillator.—For all alignment operations, connect the low side of the test oscillator to the receiver chassis, and keep the output as low as possible to avoid AVC action.

Pre-Setting Dial.—With gang condenser in full mesh, the pointer should be set at the left-hand end dial calibration mark.



Steps	Connect high side of the test oscillator to—	Tune test osc. to—	Turn radio dial to—	Adjust following for maximum peak output
1	I.F. (1N5) grid in series with .1 mfd.	455 kc		2nd I.F. trans.*
2	1A7 grid in series with .1 mfd.			1st I.F. trans.
3	Antenna lead (blue) in series with 200 mmf.	1300 kc	1300 kc	C12A (osc.)
4		600 kc	600 kc	C11A (ant.)
5	Repeat steps 3 and 4 for exact alignment.			(Osc. and (ant.) slugs

*Do not repeat step 1.