

# PHILCO RADIO & TELEV. CORP.

MODEL 263-E

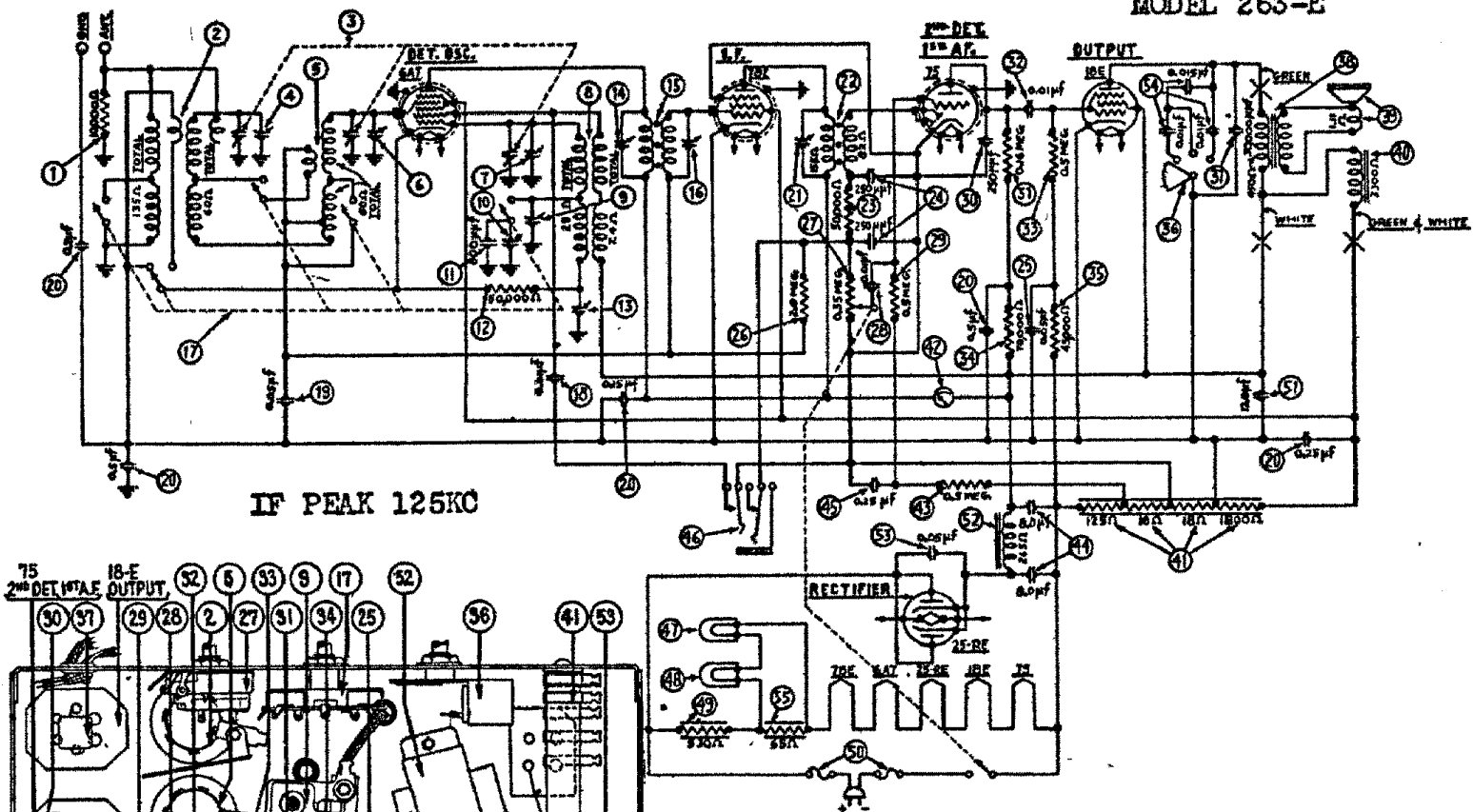


Fig. 4—Wiring Diagram

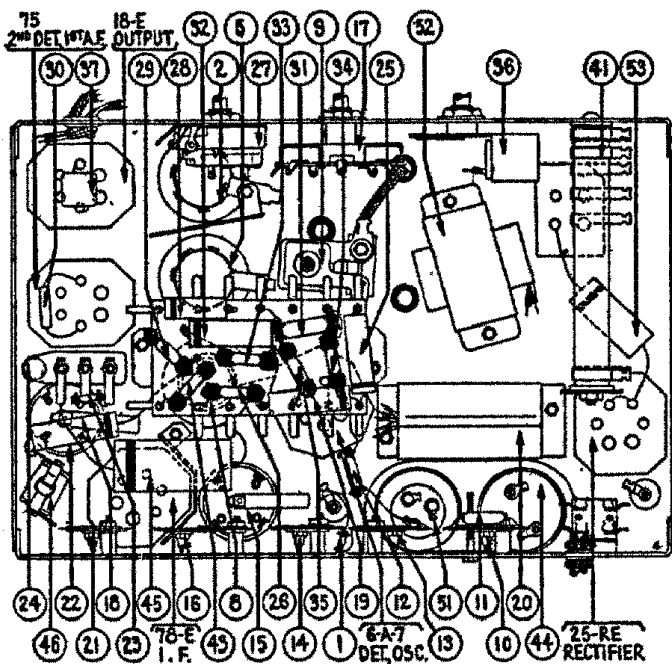


Fig. 3—Bottom of Chassis, showing components

## MODEL 263-E COMPONENTS

1	Resistor (10,000 ohms) (Brown-Black-Orange).....	33-1000
2	Antenna Transformer.....	32-1351
3	Tuning Condenser Assembly.....	31-1171
4	Compensating Condenser (Ant.).....	Part of 3
5	Detector Transformer.....	32-1159
6	Compensating Condenser (Det.).....	Part of 5
7	Compensating Condenser (Osc. H. F. Standard).....	Part of 5
8	Oscillator Transformer.....	32-1158
9	Compensating Condenser (Osc. Long-wave).....	04000-D
10	Compensating Condenser (Osc. Series Standard).....	04000-S
11	Condenser (.0008 mfd.) (Mica).....	5120
12	Resistor (50,000 ohms) (Green-Brown-Orange).....	4518
13	Compensating Condenser (Long-wave Series Osc.).....	04000-S
14	Compensating Condenser (1st I. F. Pri.).....	04000-A
15	First I. F. Transformer.....	32-1160
16	Compensating Condenser (1st I. F. Sec.).....	04000-A
17	Wave-band Switch.....	42-1057
18	Condenser (.01 mfd.) (Tubular).....	30-4145
19	Condenser (.05 mfd.) (Tubular).....	30-4020
20	Condenser Block (.5—25—2—15—5).....	30-4157

21	Compensating Condenser (2nd I. F. Pri.).....	04000-M
22	Second I. F. Transformer.....	32-1223
23	Resistor (50,000 ohms) (Green-Brown-Orange).....	6098
24	Condenser (.00025 mfd. Twin) (Block Type).....	8317-C
25	Condenser (.05 mfd.) (Tubular).....	30-4020
26	Resistor (2 mega.) (Red-Black-Green).....	5872
27	Volume Control and On-Off Switch.....	33-5065
28	Condenser (.01 mfd.) (Tubular).....	30-4124
29	Resistor (.5 meg.) (Yellow-White-Yellow).....	4517
30	Condenser (.00025 mfd.) (Mica).....	5858
31	Resistor (100,000 ohms) (Brown-Blue-Yellow).....	5331
32	Condenser (.01 mfd.) (Tubular).....	30-4145
33	Resistor (.5 meg.) (Yellow-White-Yellow).....	4517
34	Resistor (70,000 ohms) (Violet-Black-Orange).....	5385
35	Resistor (45,000 ohms) (Yellow-Green-Orange).....	5256
36	Tone Control.....	30-4043
37	Condenser (.002 mfd.) (Mica).....	6853
38	Output Transformer.....	2580
39	Voice Coil and Cone Assembly:	
	H-18.....	02625
	K-25.....	36-3174
40	Speaker Field Coil.....	02803
41	B. C. Resistor (125, 18, 18, 1800 ohms).....	33-3136
42	Shadowmeter.....	45-2028
43	Resistor (.5 meg.) (Yellow-White-Yellow).....	4517
44	Condenser (Electrolytic—8 mfd.—8 mfd.).....	30-2028
45	Condenser (.25 mfd.) (Tubular).....	30-4134
46	Phonograph Jack.....	6385
47	Pilot Lamp.....	6608
48	Pilot Lamp (Shadowmeter).....	Part of 47
49	Line Resistor (530 ohms).....	33-3134
50	Line Fuses (2).....	7227
51	Condenser: Electrolytic—12 mfd.—(8 mfd.—4 mfd.).....	30-2030
52	Filter Choke.....	4819
53	Condenser (.05 mfd.).....	30-4123
54	Condensers (Inside 53).....	Part of 53
55	Resistor (65 ohms) (Pilot Lamps).....	33-3135