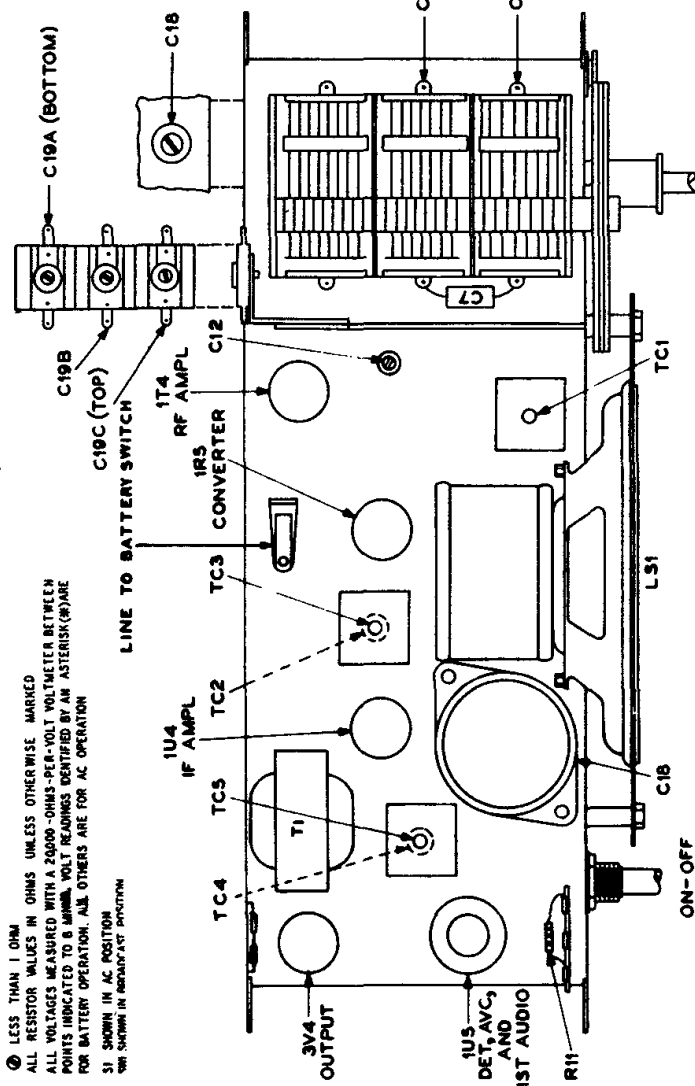
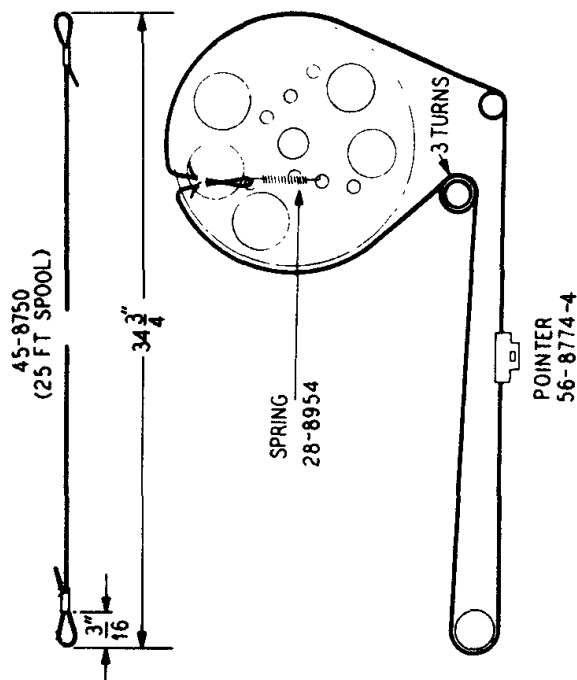
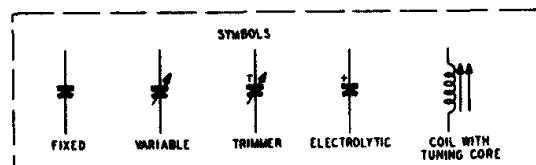
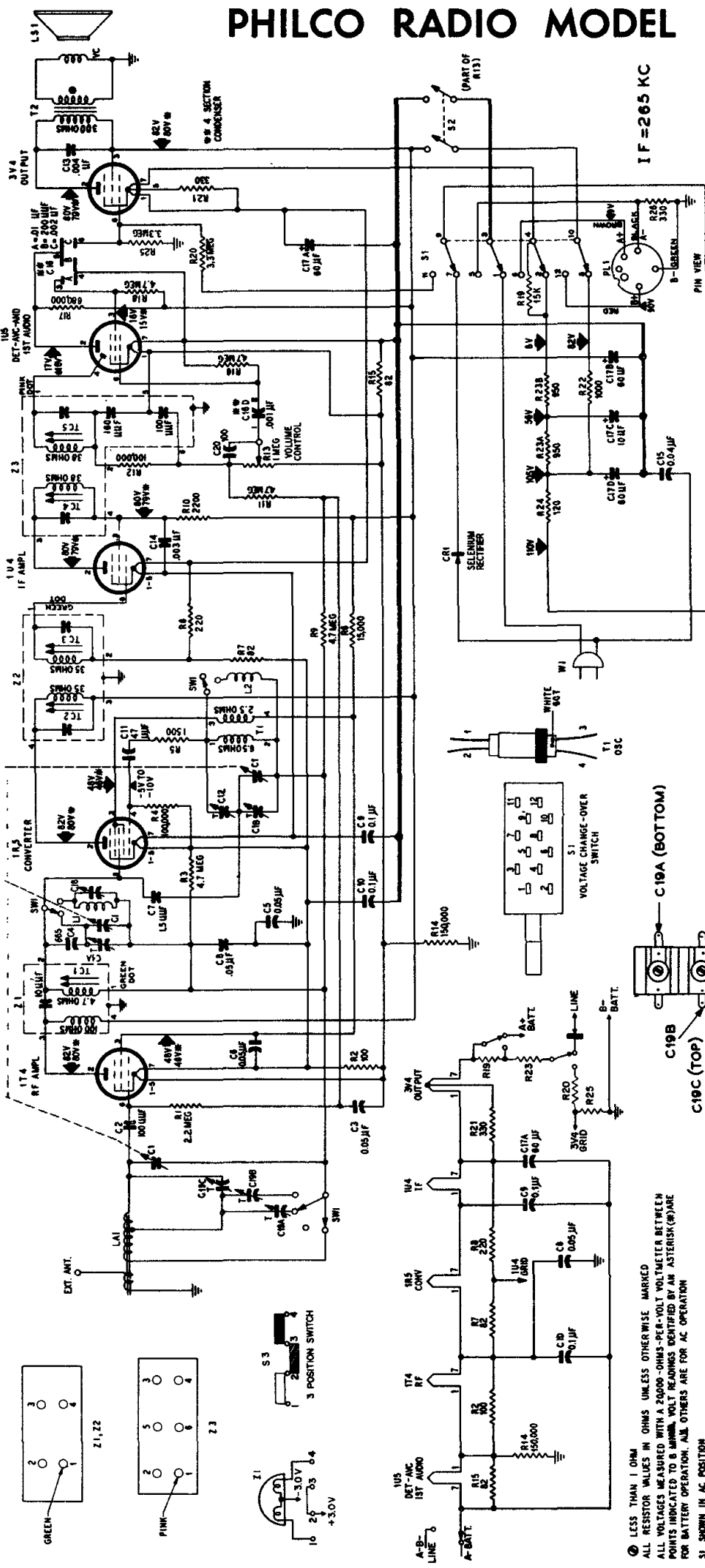


PHILCO RADIO MODEL C-667 (Code 121)



④ LESS THAN 1 OHM
ALL RESISTOR VALUES IN OHMS UNLESS OTHERWISE MARKED
ALL VOLTAGES MEASURED WITH A 2000-OHMS-PER-VOLT VOLTMETER BETWEEN
POINTS INDICATED TO MINIMA. VOLT READINGS IDENTIFIED BY AN ASTERISK (*) ARE
FOR BATTERY OPERATION. ALL OTHERS ARE FOR AC OPERATION