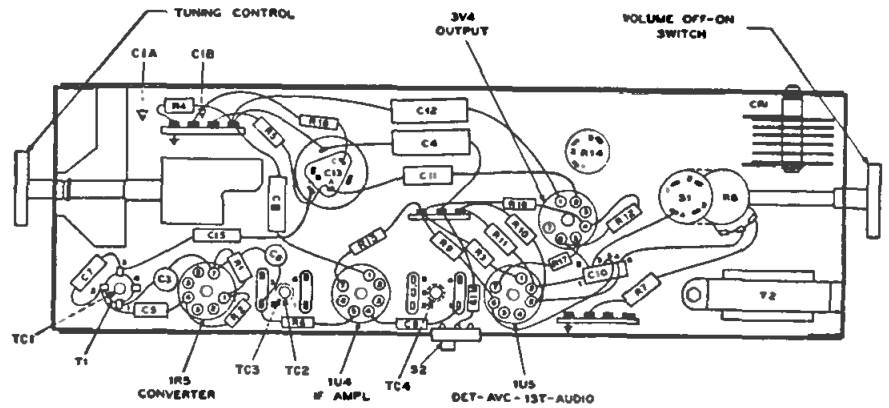


PHILCO PORTABLE RADIO MODEL C-661

MODEL C-662



MODEL C-662

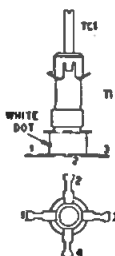
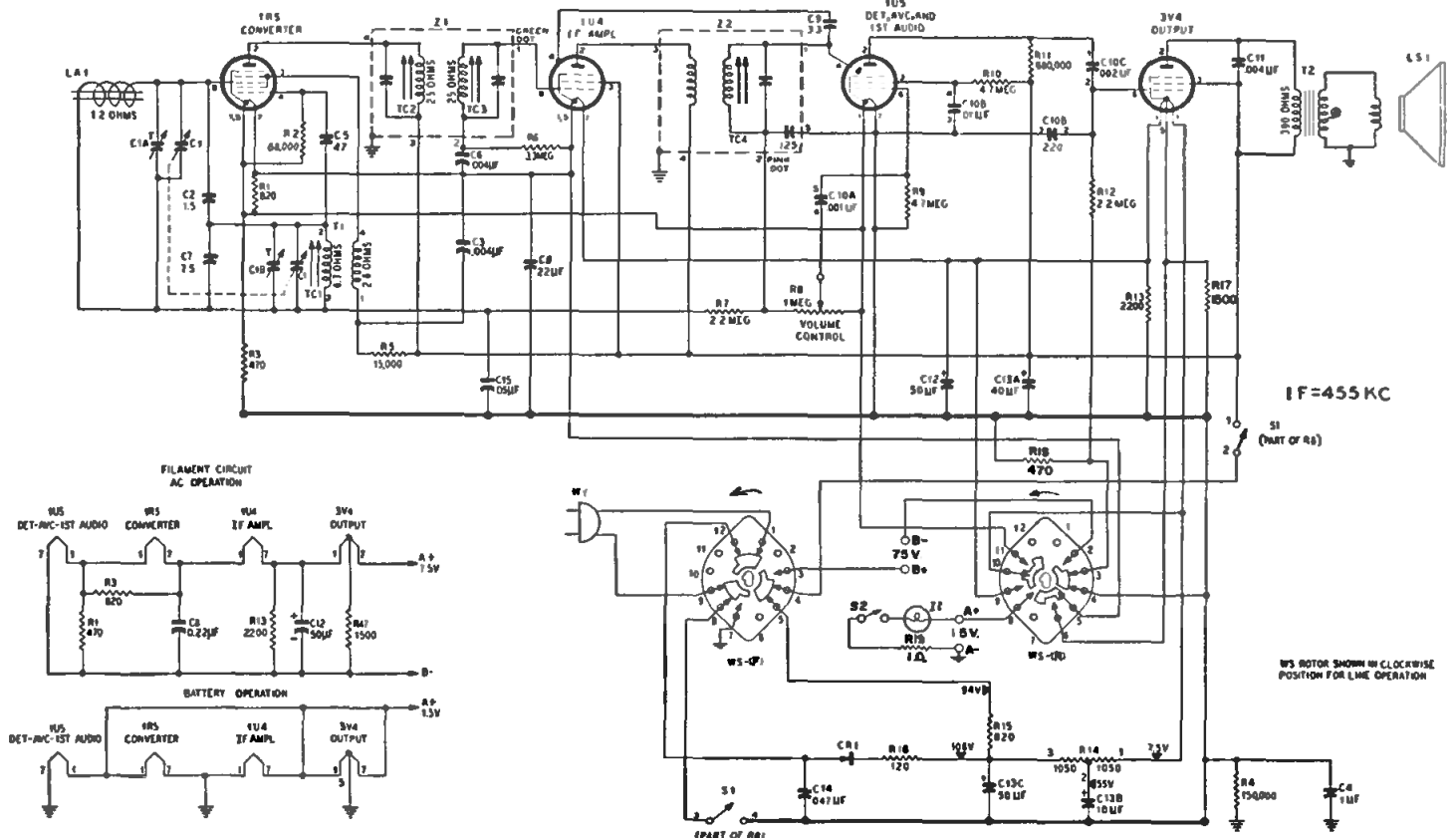


ALIGNMENT CHART

STEP	SIGNAL GENERATOR		RADIO		ADJUST
	CONNECTION TO RADIO	DIAL SETTING	DIAL SETTING	SPECIAL INSTRUCTIONS	
1	Connect signal generator through a .1-uf. condenser to pin 6 (converter grid) of 1R5.	455 kc.	Tuning gang fully open.	Adjust for maximum output in order given.	TC4—2nd i-f sec. TC2—1st i-f pri. TC3—1st i-f sec.
2	Use radiating loop. (See NOTE 1 below.)	1620 kc.	1620 kc. (mark on extreme right.)	Adjust for maximum output.	C1B—osc. trimmer
3	Same as step 2.	1400 kc.	1400 kc. (second mark from right.)	Adjust for maximum output.	C1A—antenna trimmer
4	Same as step 2.	600 kc.	600 kc. (See NOTE 2 below.)	Adjust for maximum output. Rock tuning gang while making this adjustment.	TC1—osc. core
5	Repeat steps 2, 3, and 4 until no further improvement is obtained.				

NOTE 1. Use a 6-to-8-turn, 6-inch-diameter loop made up of insulated wire. Connect to generator terminals, and place about one foot from radio loop.

NOTE 2. The tuning condenser can be set to the proper frequency by turning it until the dial pointer coincides with the respective marks on the dial backplate.



TUBE SOCKET VOLTAGES									
	1R5	1U4	1U5	3V4					
B SUPPLY									
RT PLATE									
OSC PLATE									
SCREEN PLATE									
SCREEN PLATE									
SCREEN PLATE									
PER LINE									
(AC OR DC)									

NOTES
ALL RESISTOR VALUES IN OHMS AND ALL CONDENSER VALUES IN μ F UNLESS OTHERWISE MARKED. \bullet LESS THAN 1 OHM
VOLTAGE MEASURED WITH A 20,000 OHM-PER-VOLT METER FROM POINTS INDICATED TO B.

SPECIFICATIONS
CABINET PLASTIC PORTABLE
CIRCUIT FOUR-TUBE SUPERHETERODYNE (PLUS SELENIUM RECTIFIER)
AUDIO OUTPUT A-C OR D-C OPERATION 180 MILLIWATTS
BATTERY OPERATION 85 MILLIWATTS
OPERATING VOLTAGE 117 VOLTS, A-C OR DC
15-VOLT "X" BATTERY AND 75 VOLT "B" BATTERY
POWER CONSUMPTION A-C OR D-C OPERATION 11 WATTS
BATTERY OPERATION 10 MA FROM 75 VOLT "B" BATTERY
260 MA FROM 15 VOLT "X" BATTERY
ANTENNA MAGNECOR HIGH IMPEDANCE LOOP
INTERMEDIATE FREQUENCY 455 KC
PHILCO TUBES 1R5 CONVERTER, 1U4 IF AMPLIFIER, 1U5 DETECTOR AVC, 1ST AUDIO, 3V4 OUTPUT
BATTERY TYPE P144 "B" BATTERY (2 P77 "X" BATTERIES)