

PHILCO RADIO & TELEV. CORP. MODEL 809

MODEL 809

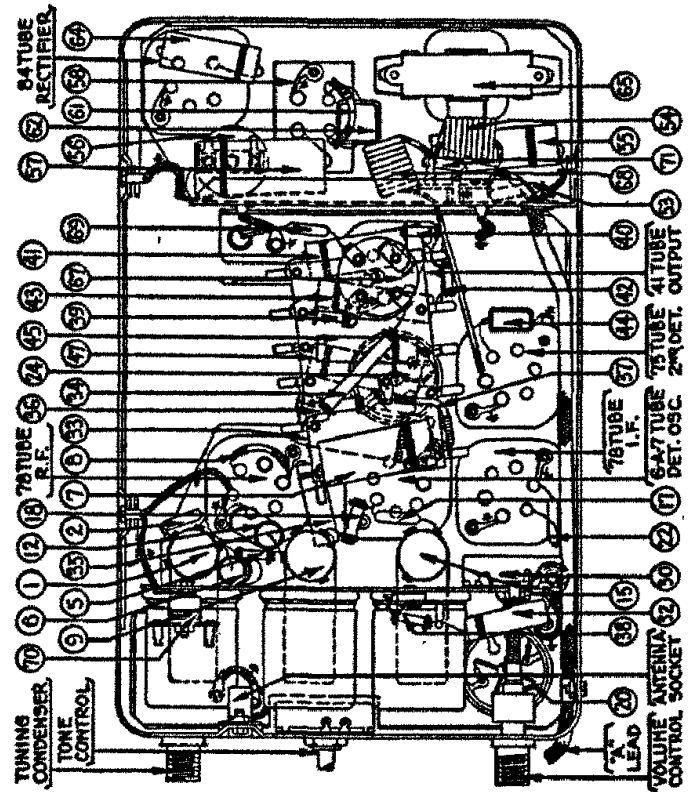
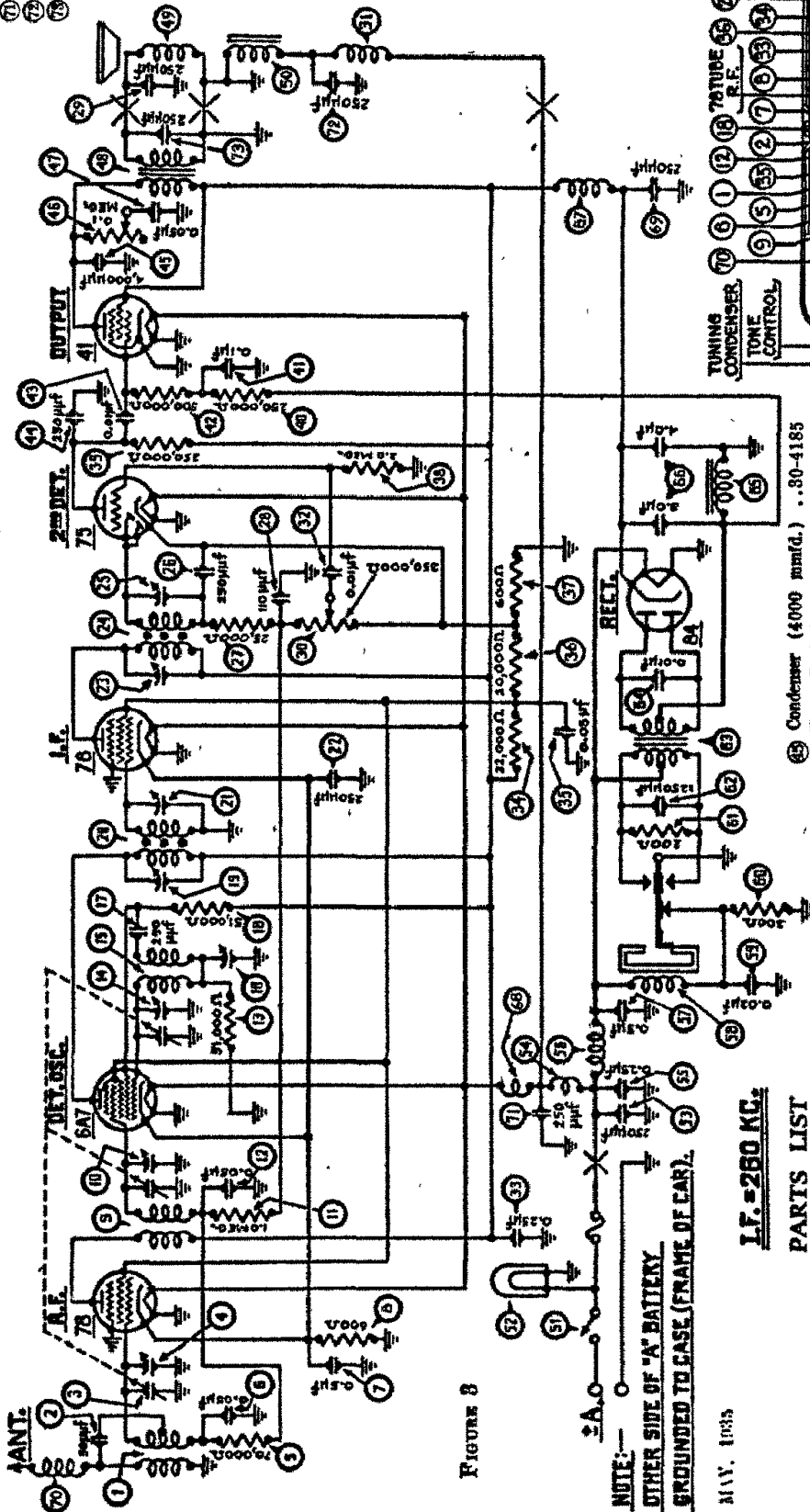


FIGURE 4

PARTS LIST

| | | |
|----|-------------------------------|--------------|
| 1 | Antenna Transformer |32-1618 |
| 2 | Condenser (50 mmfd.) |4587 |
| 3 | Tuning Condenser |31-1483 |
| 4 | First Padder (on tun. cond.) |33-1115 |
| 5 | Resistor (70,000 ohms) |33-1115 |
| 6 | Condenser (.05 mfd.) |30-4022 |
| 7 | Condenser (.5 mfd.) |30-4227 |
| 8 | Resistor (600 ohms) |33-3209 |
| 9 | R. F. Transformer |32-1619 |
| 10 | Second Padder (on tun. cond.) |32-1619 |
| 11 | Resistor (1,000,000 ohms) |33-1086 |
| 12 | Condenser (.05 mfd.) |30-4020 |
| 13 | Resistor (51,000 ohms) |6098 |
| 14 | Third Padder (on tun. cond.) | |
| 15 | Oscillator Transformer |32-1620 |
| 16 | Fourth Padder (on tun. cond.) | |
| 17 | Condenser (250 mmfd.) |30-1032 |
| 18 | Resistor (51,000 ohms) |33-1163 |
| 19 | Padder (Pri. 1st I. F. Tran.) | |
| 20 | First I. F. Transformer |32-1621 |
| 21 | Padder (Sec. 1st I. F. Tran.) | |
| 22 | Condenser (250 mmfd.) |30-1032 |

| | | |
|----|---------------------------|--------------|
| 43 | Condenser (4000 mmf.) | ...30-4185 |
| 44 | Tone Control | ...33-5101 |
| 45 | Condenser (.05 mfd.) | ...30-4012 |
| 46 | Output Transformer |2598 |
| 47 | Cone & Voice Coil |36-3159 |
| 48 | Field-coil Assembly |021795 |
| 49 | "On" & "Off" Switch Assn. | 42-5336 |
| 50 | Pilot Lamp |34-2039 |
| 51 | Condenser (250 mmf.) | ...30-1032 |
| 52 | "A" Choke |32-1644 |
| 53 | Condenser (.25 mfd.) | ...30-4146 |
| 54 | Vibrator Choke |32-1877 |
| 55 | Condenser (.5 mfd.) | ...30-4227 |
| 56 | Vibrator |33-5036 |
| 57 | Condenser (.02 mfd.) | ...30-4039 |
| 58 | Resistor (300 ohms) | ...33-3010 |
| 59 | Resistor (200 ohms) |7217 |
| 60 | Condenser (1250 mmf.) |5586 |
| 61 | Power Transformer |32-7352 |
| 62 | Condenser (.01 mfd.) | ...30-4051 |
| 63 | Filter Choke |32-7351 |
| 64 | Filter Condenser |30-2109 |
| 65 | R. F. Choke |32-1348 |
| 66 | "A" Choke |32-1438 |

| | |
|--------------------------|--------------|
| Condenser (250 mm(d.) |30-1032 |
| Antenna Choke |32-1637 |
| Condenser (250 mm(d.) |30-1032 |
| Condenser (250 mm(d.) |30-1032 |
| Condenser (250 mm(d.) |30-1032 |
| Control Assembly |42-5332 |
| Glass and Dial |27-7835 |
| Pointer Assembly |42-5335 |
| Bezel Plate |27-7108 |
| Knobs (Tuning-Volume) |27-4187 |
| Knob (Tone Control) |27-4052 |
| Stud (Spher Mtg.) |6122 |
| Control Mounting Bracket |29-2773 |
| Keys |28-2782 |
| Studs (Set Mtg.) |28-6298 |
| Nuts (Set Mtg.) |W98A |
| Spark Plug Resistors |35-1195 |
| Distributor Resistor |33-1196 |
| Interference Condensers |30-4007 |
| Fuse |7217 |
| Fuse Insulator |27-7729 |
| Antenna Lead |39-5131 |
| Flexible Shaft (21") |28-8554 |
| Flexible Shaft (28") |28-8355 |
| Tone Control Shaft (21") |29-8356 |
| Tone Control Shaft (28") |28-8358 |
| Lock Cylinder Assembly |42-5387 |
| 28" Shaft Fit |45-1133 |