

FIG. 3

MARCH, 1935

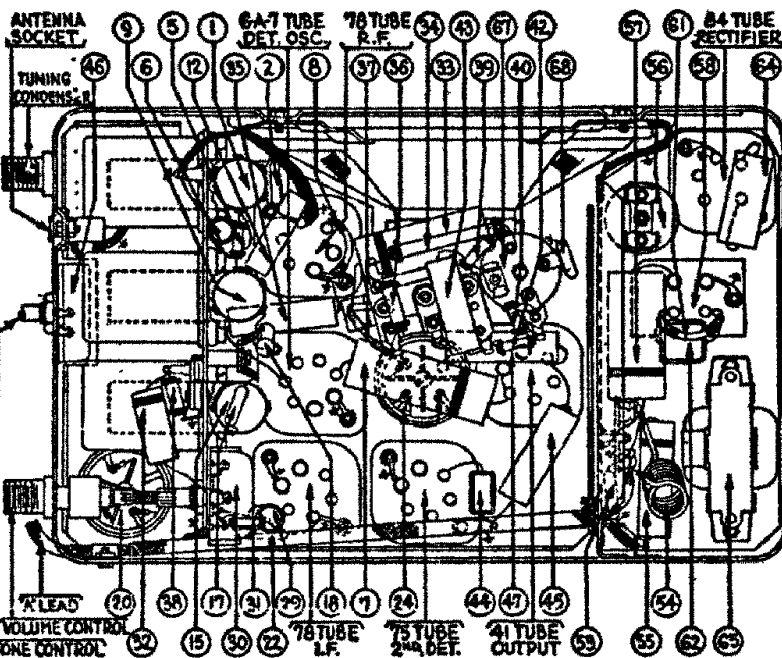


FIG. 4

## MODEL 806 PARTS LIST

| No. Shown on Schematic | Description                        | Part No. | No. Shown on Schematic | Description                   | Part No. |
|------------------------|------------------------------------|----------|------------------------|-------------------------------|----------|
| 1                      | Antenna Transformer.....           | 32-1618  | 45                     | Condenser (4000 mmfd.).....   | 30-4185  |
| 2                      | Condenser (50 mmfd.).....          | 4587     | 46                     | Tone Control.....             | 33-5101  |
| 3                      | Tuning Condenser.....              | 31-1433  | 47                     | Condenser (.05 mfd.).....     | 30-4012  |
| 4                      | First Padder (on tun. cond.).....  | 30-1032  | 48                     | Output Transformer.....       | 32-7019  |
| 5                      | Resistor (70,000 ohms).....        | 33-1115  | 49                     | Cone & Voice Coil.....        | 36-3406  |
| 6                      | Condenser (.05 mfd.).....          | 30-4020  | 50                     | Field coil Assembly.....      | 36-3405  |
| 7                      | Condenser (.5 mfd.).....           | 30-4227  | 51                     | "On" & "Off" Switch Asm.....  | 42-5336  |
| 8                      | Resistor (600 ohms).....           | 33-3209  | 52                     | Pilot Lamp.....               | 34-2039  |
| 9                      | R. F. Transformer.....             | 32-1619  | 53                     | Condenser (250 mmfd.).....    | 30-1032  |
| 10                     | Second Padder (on tun. cond.)..... | 30-1032  | 54                     | "A" Choke.....                | 32-1644  |
| 11                     | Resistor (1,000,000 ohms).....     | 33-1096  | 55                     | Condenser (.25 mfd.).....     | 30-4146  |
| 12                     | Condenser (.05 mfd.).....          | 30-4020  | 56                     | Vibrator Choke.....           | 32-1625  |
| 13                     | Resistor (51,000 ohms).....        | 6098     | 57                     | Condenser (.5 mfd.).....      | 30-4227  |
| 14                     | Third Padder (on tun. cond.).....  | 30-1032  | 58                     | Vibrator.....                 | 38-5036  |
| 15                     | Oscillator Transformer.....        | 32-1620  | 59                     | Condenser (.02 mfd.).....     | 30-4039  |
| 16                     | Fourth Padder (on tun. cond.)..... | 30-1032  | 60                     | Resistor (300 ohms).....      | 33-3010  |
| 17                     | Condenser (230 mmfd.).....         | 30-1032  | 61                     | Resistor (200 ohms).....      | 7217     |
| 18                     | Resistor (51,000 ohms).....        | 33-1163  | 62                     | Condenser (1250 mmfd.).....   | 5886     |
| 19                     | Padder (Pri. 1st I. F. Tran.)..... | 32-1621  | 63                     | Power Transformers.....       | 32-7352  |
| 20                     | First I. F. Transformer.....       | 32-1621  | 64                     | Condenser (.01 mfd.).....     | 30-4051  |
| 21                     | Padder (Sec. 1st I. F. Tran.)..... | 30-1032  | 65                     | Filter Choke.....             | 32-7351  |
| 22                     | Condenser (250 mmfd.).....         | 30-1032  | 66                     | Filter Condenser.....         | 30-2109  |
| 23                     | Padder (Pri. 2nd I. F. Tran.)..... | 32-1622  | 67                     | R. F. Choke.....              | 32-1348  |
| 24                     | Second I. F. Transformer.....      | 32-1622  | 68                     | Condenser (250 mmfd.).....    | 30-1032  |
| 25                     | Padder (Sec. 2nd I. F. Tran.)..... | 30-1032  |                        | Control Assembly.....         | 42-5331  |
| 26                     | Condenser (250 mmfd.).....         | 30-1032  |                        | Glass and Dial.....           | 27-7835  |
| 27                     | Resistor (25,000 ohms).....        | 33-1013  |                        | Pointer Assembly.....         | 42-5335  |
| 28                     | Condenser (110 mmfd.).....         | 30-1031  |                        | Bezel Plate.....              | 28-7108  |
| 29                     | Condenser (.03 mfd.).....          | 30-4025  |                        | Knobs.....                    | 27-4187  |
| 30                     | Vol. Con. & Coupling Asm.....      | 38-6605  |                        | Control Mounting Bracket..... | 29-2773  |
| 31                     | Resistor (20,000 ohms).....        | 33-1178  |                        | Keys.....                     | 28-2782  |
| 32                     | Condenser (.01 mfd.).....          | 30-4169  |                        | Studs (Set Mtg).....          | 28-6272  |
| 33                     | Condenser (.25 mfd.).....          | 30-4134  |                        | Nuts (Set Mtg).....           | W98A     |
| 34                     | Resistor (32,000 ohms).....        | 3325     |                        | Spark Plug Resistors.....     | 33-1195  |
| 35                     | Condenser (.05 mfd.).....          | 30-4020  |                        | Distributor Resistor.....     | 33-1196  |
| 36                     | Resistor (20,000 ohms).....        | 6650     |                        | Interference Condensers.....  | 30-4007  |
| 37                     | Resistor (600 ohms).....           | 33-3207  |                        | Fuse.....                     | 7227     |
| 38                     | Resistor (32,000 ohms).....        | 33-1025  |                        | Fuse Insulator.....           | 27-7729  |
| 39                     | Resistor (250,000 ohms).....       | 33-1097  |                        | Antenna Lead.....             | 38-5131  |
| 40                     | Resistor (250,000 ohms).....       | 33-1097  |                        | Flexible Shaft (21").....     | 28-8354  |
| 41                     | Condenser (.1 mfd.).....           | 30-4122  |                        | Flexible Shaft (28").....     | 28-8355  |
| 42                     | Resistor (300,000 ohms).....       | 6097     |                        | Lock Cylinder Assembly.....   | 42-5337  |
| 43                     | Condenser (.01 mfd.).....          | 30-4145  |                        | 28" Shaft Kit.....            | 45-1133  |
| 44                     | Condenser (250 mmfd.).....         | 30-1032  |                        |                               |          |

With the tuning condenser in this position, adjust the high-frequency padder 19 until the maximum reading is obtained in the output meter. This is the true setting for 1580 K.C., 58 on the dial scale. Adjust the padders 10 and 4 in the same manner.

Remove the paper and turn the tuning condenser plates in mesh to approximately 60 on the dial scale, and adjust the signal generator to 600 K.C. Roll the tuning condenser and adjust the series padder 10 for the maximum meter reading.

Readjust the padder 19 at 1580 K.C.

Tune the condenser to 1400 K.C. and adjust the padders 9 and 4 for the maximum reading.

If this procedure has been carefully followed and an accurately calibrated oscillator or signal generator used, the Receiver will be adjusted properly.

NOTE—A condenser, 60, Part No. 30-1032 (250 mmfd.), has been added to the Receiver. One side is connected between the choke 57 and the 4 mfd. section of 58, and the other side to ground.