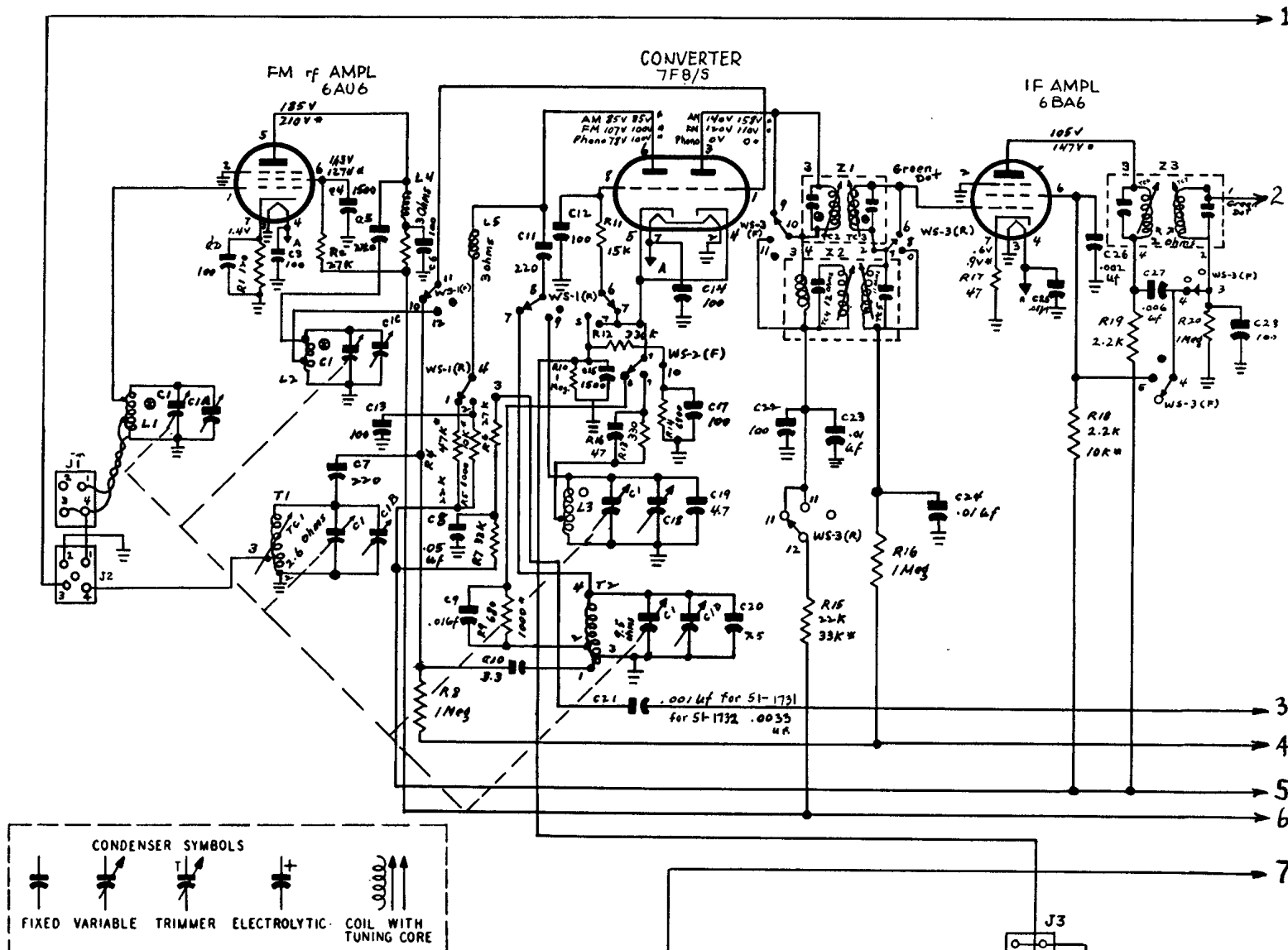


PHILCO RADIO-PHONOGRAPH MODELS 51-1731 and 51-1732



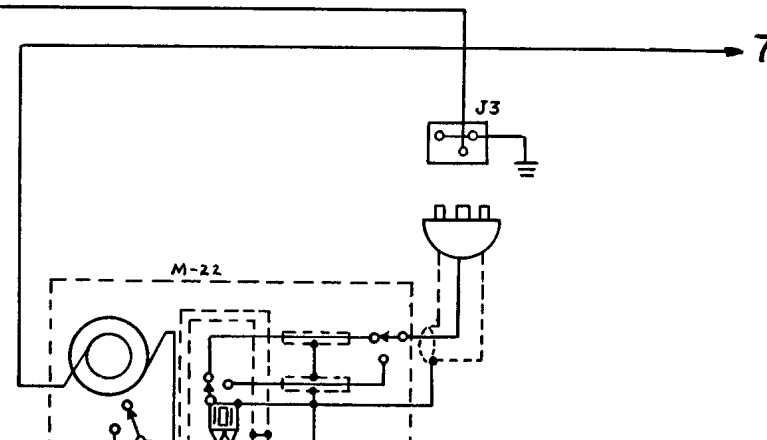
ALL RESISTOR VALUES IN OHMS AND ALL CONDENSER VALUES IN μF UNLESS MARKED OTHERWISE

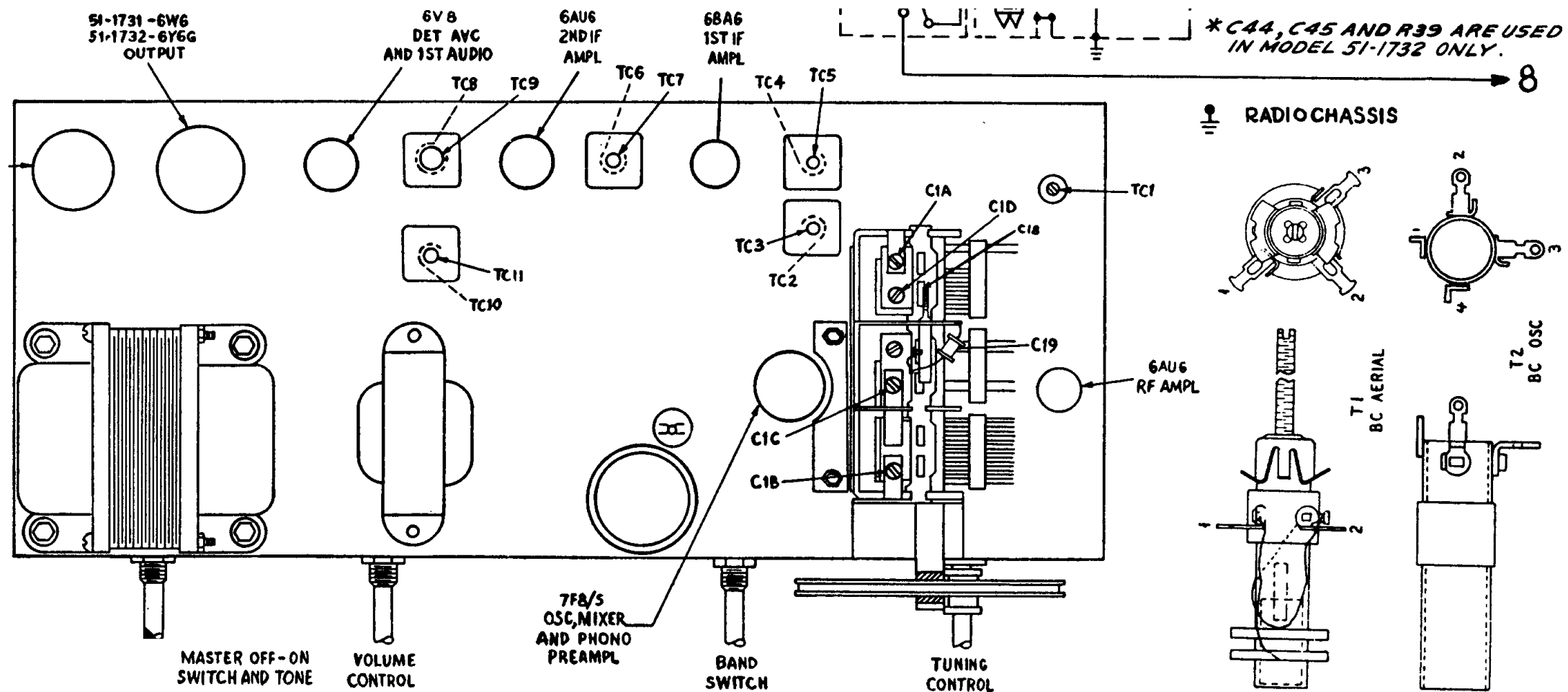
VOLTAGES WERE MEASURED FROM POINTS INDICATED TO GROUND WITH A 20,000-OHMS-PER-VOLT METER AT A LINE VOLTAGE OF 117VAC

⊙ INDICATES LESS THAN 1 OHM

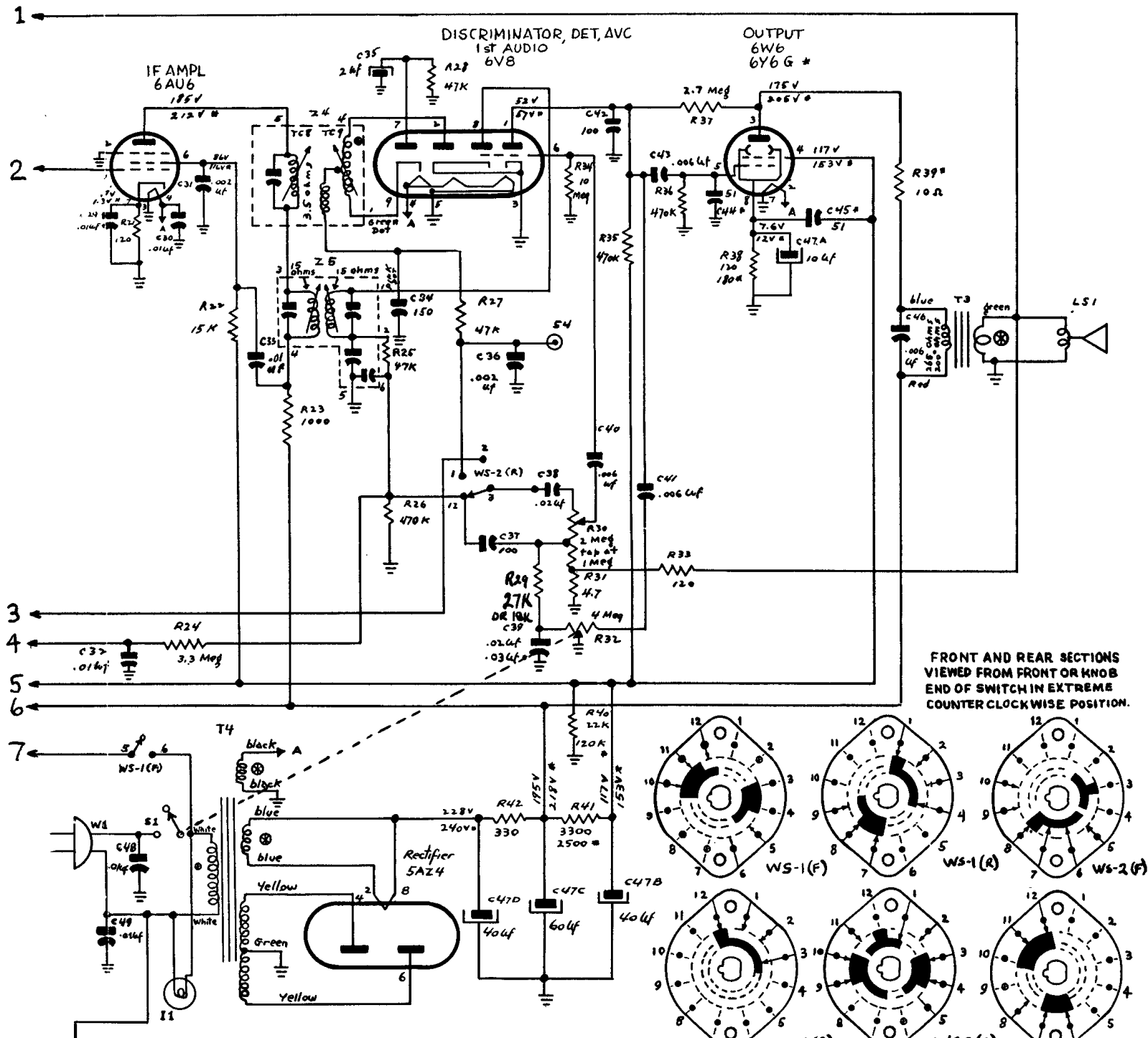
* THE PARTS VALUES AND VOLTAGES MARKED WITH AN ASTERISK APPLY TO MODEL 51-1732

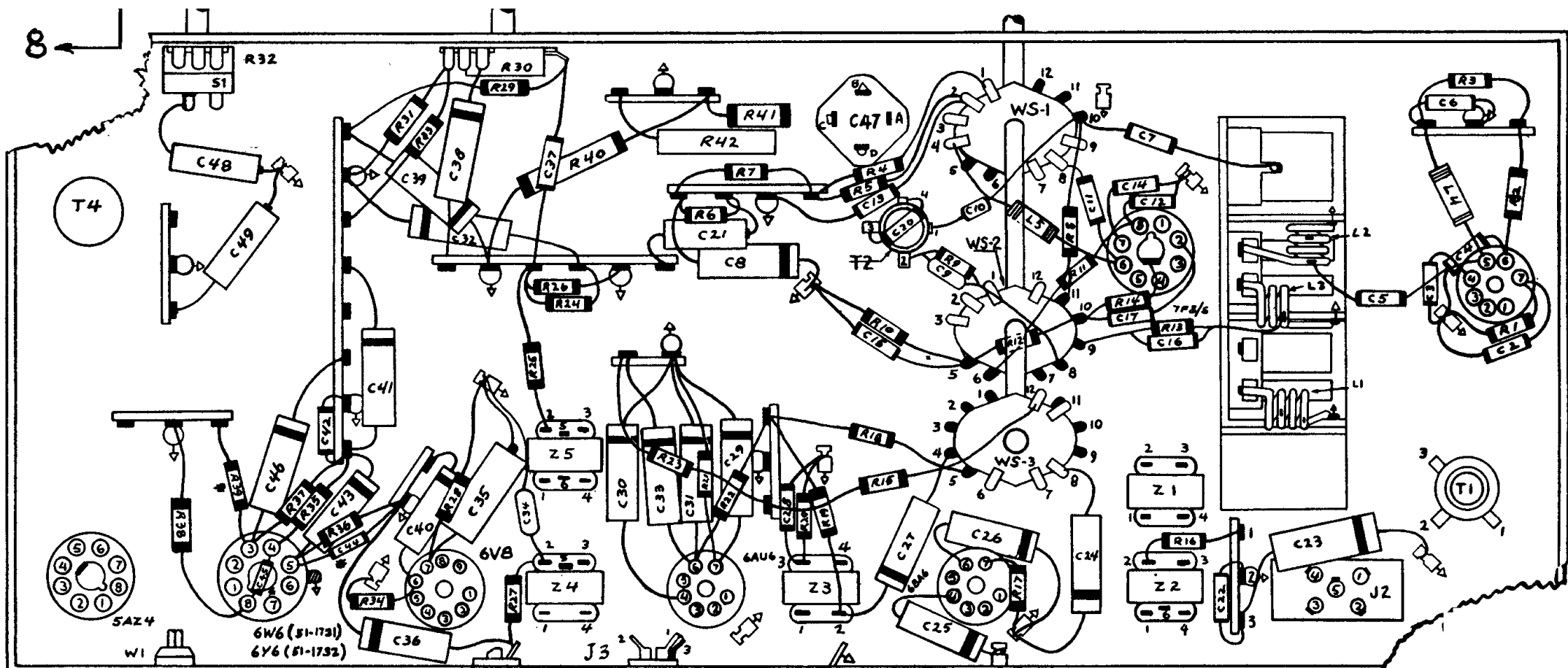
Top View, Showing Trimmer Locations





Philco Radio-Phonograph Models 51-1731 and 51-1732, continued,
(Alignment Information on the next page).





Philco Models 51-1731 and 51-1732 Alignment Information (continued)

AM ALIGNMENT PROCEDURE

Make alignment with loop aerial connected to radio. The AM alignment should be made before the FM alignment.

DIAL POINTER: Calibration and pointer-index measurements are shown in figure 3. With tuning gang fully meshed, set pointer to index mark.

OUTPUT METER: Connect across speaker voice-coil terminals.

SIGNAL GENERATOR: Connect AM r-f signal generator as indicated in chart. Generator ground lead to chassis. Use modulated output.

RADIO CONTROLS: Set volume control to maximum, tone control counterclockwise, and band switch to broadcast position.

OUTPUT LEVEL: During alignment, adjust signal-generator output to hold output meter indication below 1.25 volts.

STEP	SIGNAL GENERATOR		RADIO		ADJUST TRIMMER
	CONNECTION TO RADIO	DIAL SETTING	DIAL SETTING	SPECIAL INSTRUCTIONS	
1	Through a .01- μ f. condenser to mixer grid, pin 1, of 7F8/S.	455 kc.	Gang fully meshed.	Adjust, in order given, for maximum output.	TC11—2nd AM i-f sec. TC10—2nd AM i-f pri. TC5—1st AM i-f sec. TC4—1st AM i-f pri.
2	Radiating loop. (See Note below.)	1600 kc.	1600 kc.	Adjust for maximum output.	C1D—AM osc. shunt
3	Same as step 2.	1500 kc.	1500 kc.	Adjust for maximum output.	C1B—AM ant. shunt
4	Same as step 2.	580 kc.	580 kc.	Adjust for maximum output. This should not be necessary unless T1 (aerial transformer) has been replaced.	TC1—AM ant. tuning core

RADIATING LOOP: Make up a 6-to-8 turn, 6-inch-diameter loop, using insulated wire; connect to signal generator leads and place near radio loop aerial.

FM ALIGNMENT PROCEDURE

Make the AM alignment first.

RADIO CONTROLS: Set volume control to maximum, tone control counterclockwise, and band switch to FM position. Allow radio and signal generator to warm up for at least 15 minutes before making alignment.

SIGNAL GENERATOR: Use a signal generator capable of delivering a 9.1-mc. FM signal with a deviation of ± 80 kc., and modulated AM signals of 92 mc., 105 mc., and 108 mc. Philco Model 7008 Precision Visual Alignment Generator fulfills these requirements. **NOTE:** The signal generator must be well bonded to radio chassis.

OSCILLOSCOPE: Connect to FM Test jack. Model 7008 is suggested.

OUTPUT METER: Connect across speaker voice-coil terminals.

R-F COIL NOTE: Check resonance of circuits containing coils L1, L2, and L3 by inserting each end of a tuning wand, such as Philco Part No. 45-8885, into coil. If signal strength increases when powdered-iron end is inserted, compress turns slightly. If signal strength increases when brass end is inserted, spread turns slightly. If signal strength decreases when each end is inserted, no adjustment is necessary. Do no spread or compress turns excessively; only a small change is required at these high frequencies.

STEP	SIGNAL GENERATOR		RADIO		ADJUST TRIMMER
	CONNECTION TO RADIO	DIAL SETTING	DIAL SETTING	SPECIAL INSTRUCTIONS	
1	Through a .01- μ f. condenser to pin 1 of 6AU6 I-F amplifier.*	9.1 mc. ± 80 kc. deviation.	Gang fully meshed.	Adjust TC9 for correct crossover. Adjust TC8 for maximum and equal peaks. Repeat.	TC9—FM det. sec. TC8—FM det. pri.
2	.01- μ f. condenser to pin 1 of 6BA6.*	9.1 mc. ± 80 kc. deviation.	Gang fully meshed.	Adjust, in order given, for maximum and equal peaks. Repeat.	TC7—FM 2nd i-f sec. TC6—FM 2nd i-f pri.
3	.01- μ f. condenser to pin 1 of 7F8/S.*	9.1 mc. ± 80 kc. deviation.	Gang fully meshed.	Adjust, in order given, for maximum and equal peaks. Repeat.	TC3—FM 1st i-f sec. TC2—FM 1st i-f pri.
4	Through a 300 ohm dummy aerial to FM aerial socket, J1.	108 mc.	108 mc.	Adjust trimmer for maximum reading on output meter.	C18—FM osc.
5	Same as step 4.	105 mc.	105 mc.	Adjust for maximum output while rocking gang.	C1C—FM r-f C1A—FM aerial
6	Same as step 4.	92 mc.	92 mc.	Adjust coils, in order given, for proper resonance	L3—FM osc. coil L2—FM r-f coil L1—FM aerial coil

*CAUTION: Do not overload! When aligning the i-f stages, the curve will be distorted or destroyed if too great a signal is used. To check, attenuate the signal input. If the curve changes in form, rather than merely decreasing in amplitude, the stage is overloaded.