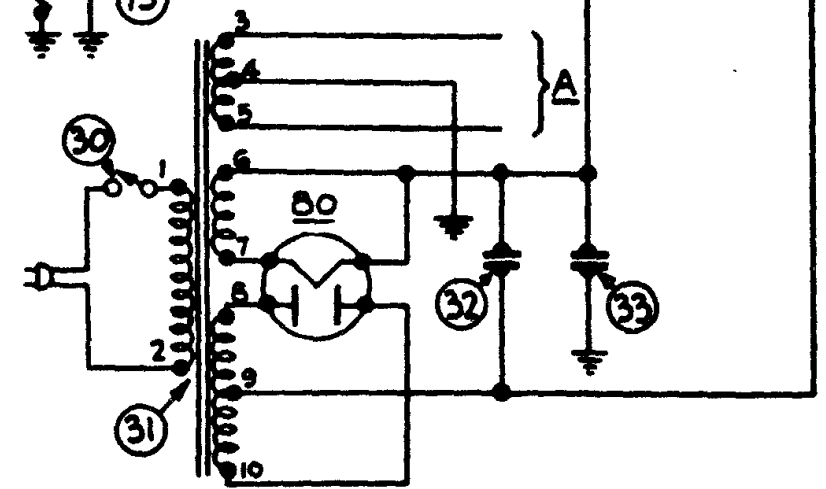


INDICATES CHASSIS

- ① Volume Control
- ② First R. F. Transformer
- ③ Gang Condenser
- ④ Compensating Condenser (Part of Gang Condenser Assembly)
- ⑤ Second R. F. Transformer
- ⑥ Compensating Condenser (Part of Gang Condenser Assembly)
- ⑦ Third R. F. Transformer
- ⑧ Compensating Condenser (Part of Gang Condenser Assembly)
- ⑨ Condenser—250 Mmf.
- ⑩ Condenser—250 Mmf.
- ⑪ Resistor—10,000 Ohms
- ⑫ Condenser—.01 Mfd.
- ⑬ Resistor—240,000 Ohms
- ⑭ Resistor—490,000 Ohms
- ⑮ Bypass Condenser (.15 Mfd., .25 Mfd., 2-5 Mfd., .1 Mfd.) 50-60 cycles

- ⑯ Bypass Condenser—.01 Mfd.
- ⑰ Output Transformer
- ⑱ Voice Coil and Cone Assembly
- ⑲ Speaker Field (Assembled with Pot and Frame)
- ⑳ Resistor—490,000 Ohms.
- ㉑ Resistor—160,000 Ohms.
- ㉒ Resistor—150 Ohms and Condenser—.05 Mfd.
- ㉓ Resistor—15,000 Ohms
- ㉔ Bypass Condenser—.05 Mfd.
- ㉕ Bypass Condenser—(.05 Mfd.) (combined with ㉔)
- ㉖ Resistor—25,000 Ohms
- ㉗ Resistor—99,000 Ohms
- ㉘ Resistor—32,000 Ohms
- ㉙ Resistor—99,000 Ohms
- ㉚ On-Off Switch
- ㉛ Power Transformer—50-60 cycles
- ㉜ Electrolytic Condenser—6 Mfd.—50-60 cycles
- ㉝ Electrolytic Condenser—10 Mfd. 25-40 cycles
- ㉞ Electrolytic Condenser—6 Mfd.—



Philco Radio

MODELS 50 AND 50-A