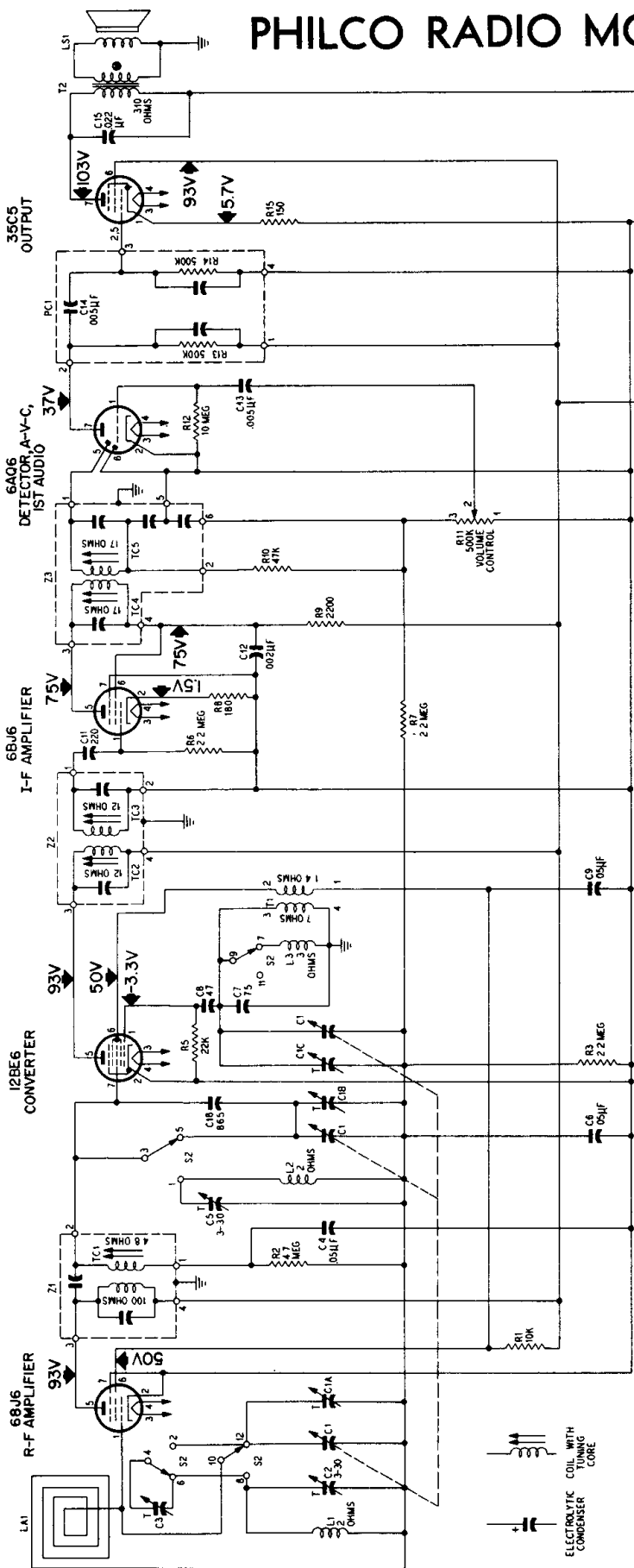


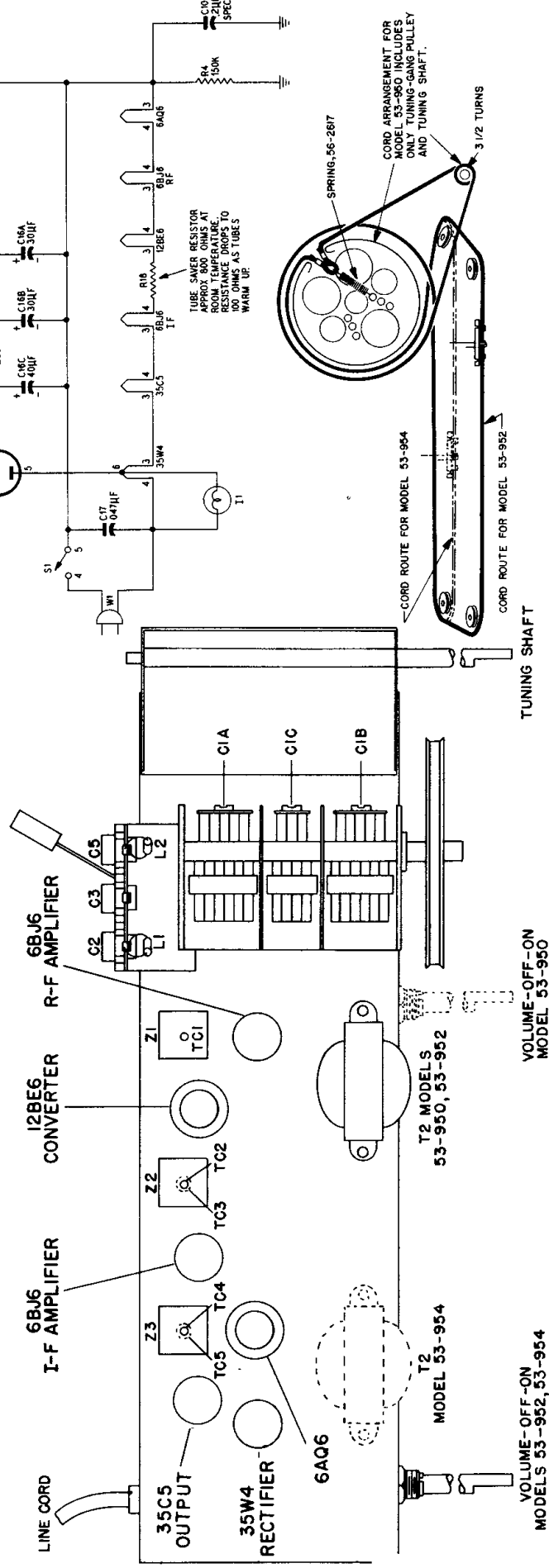
PHILCO RADIO MODELS 53-950, 53-952, AND 53-954

Models 53-800 and 53-804 are similar to these sets except for clock circuits.



Power Consumption 30 watts
 Antenna Built-in, high-impedance loop
 Intermediate Frequency 455 kc.

BAND SWITCH
 SPECIAL SERVICES—BROADCAST



NOTE
 ● LESS THAN ONE OHM.
 ALL RESISTOR VALUES IN OHMS
 UNLESS OTHERWISE SPECIFIED.
 ALL CAPACITOR VALUES IN μF
 UNLESS OTHERWISE SPECIFIED.
 ALL VOLTAGE MEASUREMENTS
 POINTS INDICATED AND B- WITH A
 20,000 OHMS-PER-VOLT VOLTMETER.
 CONNECTION OF C10 OPPOSITE PLATE
 TO C10 IN MODELS 53-950 AND 53-954
 B- ON MODELS 53-952 AND 53-954
 SWITCH S2 SHOWN IN BROADCAST
 POSITION

