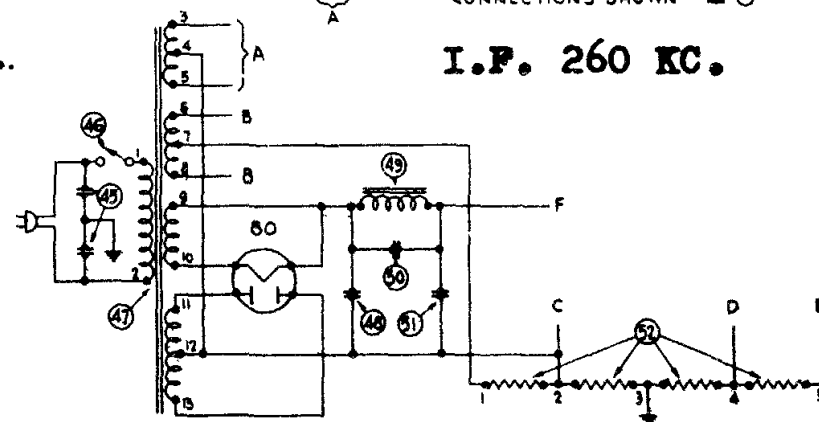
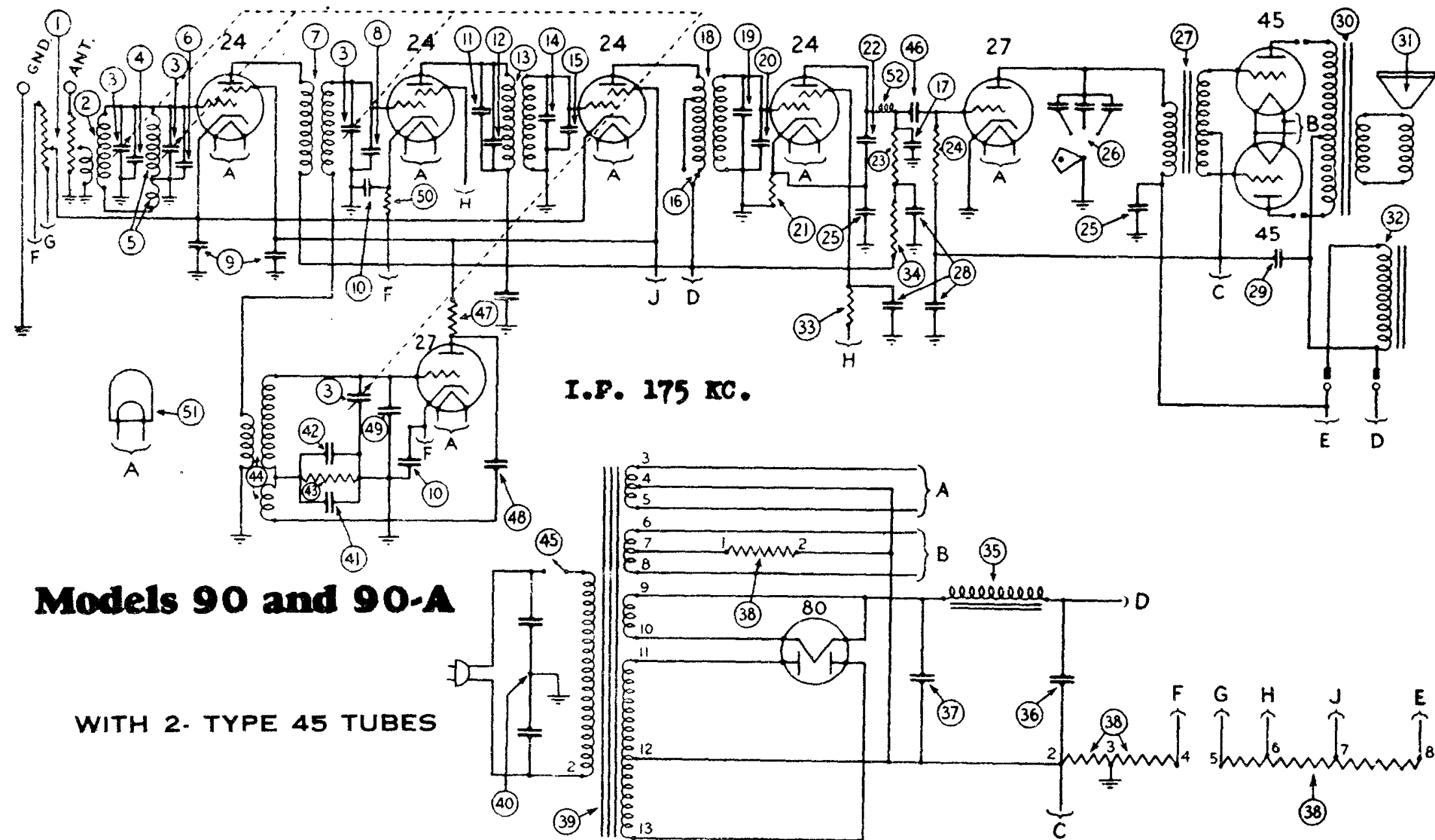


No. on Figs. 1 and 2	Description	Part No.
①	Resistor (10,000 Ohms)	4412
②	Antenna Transformer	04317
③	Resistor (1,000,000 Ohms)	4409
④	Tuning Condenser (50-60 cycles)	04309
⑤	Tuning Condenser (25-40 cycles)	04310
⑥	Compensating Condenser — Antenna — Part of Tuning Condenser Assembly	
⑦	Condenser (.05 Mfd.)	3615-L
⑧	Condenser (.09 Mfd. and 200 Ohm Re- sistor)	4989-L
⑨	Detector Transformer	04408
⑩	Condenser (.09 Mfd.)	3615-AJ
⑪	Compensating Condenser — Detector — Part of Tuning Condenser Assembly	
⑫	Compensating Condenser—Coupling	04000-M
⑬	Oscillator Coil	04409
⑭	Condenser (700 Mmf.)	4520
⑮	Resistor (15,000 Ohms)	6208
⑯	Compensating Condenser—Low Frequency	04000-B
⑰	Condenser (410 Mfd.)	5120
⑱	Resistor (1,000,000 Ohms)	4409
⑲	Resistor (1,000 Ohms)	4590
⑳	Compensating Condenser—Second I.F. Primary	04000-M
㉑	Condenser (2-.25, 2-.5 Mfd.)	04407
㉒	Second I.F. Transformer	04320
㉓	Resistor (99,000 Ohms)	4411
㉔	Volume Control	6015

No. on Figs. 1 and 2	Description	Part No.
㉕	Condenser (110 Mmf.)	4519
㉖	Condenser (110 Mmf.)	4519
㉗	Condenser (.01 Mfd.)	3908-N
㉘	Resistor (1,000,000 Ohms)	4517
㉙	Resistor (490,000 Ohms)	4516
㉚	Resistor (25,000 Ohms)	4409
㉛	Resistor (25,000 Ohms)	4409
㉜	Condenser (.01 Mfd.)	3908-X
㉝	Resistor (1,000,000 Ohms)	4409
㉞	Tone Control	08137
㉟	Resistor (51,000 Ohms)	4518
㊱	Push-Pull Input Transformer	6064
㊲	Condenser (1,000 Mmf.) *	5215
㊳	Push-Pull Output Transformer	2635
㊴	Voice Coil and Cone Assembly	02874
㊵	Speaker Field Assembled with Pot	02892
㊶	Pilot Light	3468
㊷	Condenser (.015 Mfd. Double)	3798-E
㊸	On-Off Switch	4095
㊹	Power Transformer (50-60 cycles)	6072
㊺	Power Transformer (25-40 cycles)	6073
㊻	Power Transformer (50-60 cycles, 230 volts)	6074
㊼	Electrolytic Condenser (6 Mfd.) 50-60 cycles	4916
㊽	Filter Choke	4819
㊾	Condenser (.15 Mfd.)	6287-B
㊿	Condenser (6 Mfd.)	4916
1	B. C. Resistor	6071



PHILCO RADIO
MODEL 90
WITH 2- TYPE 47 TUBES
SERIAL No. 32,001 TO B35,000
AND ABOVE B53,100



Models 90 and 90-A

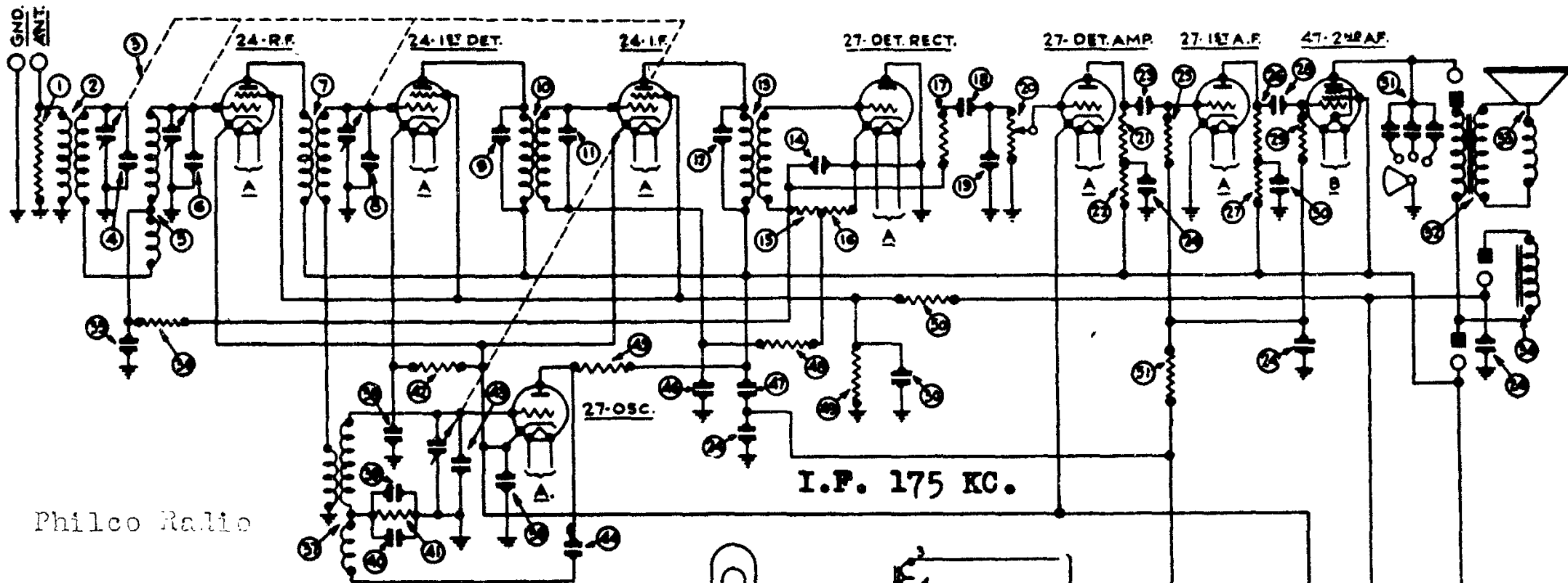
WITH 2- TYPE 45 TUBES

No. on Figs. 3 and 4	Description	Part No.	No. on Figs. 3 and 4	Description	Part No.
①	Volume Control	5039	②	Condenser .015 M. F. (Double)	3798-E
②	1st R. F. Transformer	03013	③	Condenser .0007 M. F. } Assembled	03060
③	Gang Condenser—50 to 60 cycles	03001	④	Compensating Condenser	
④	Gang Condenser—25 to 40 cycles	03078	⑤	Resistor—50,000 Ohms	4287
⑤	Compensating Condenser (Part of Tun- ing Condenser Assembly)		⑥	Oscillator Coil	03016
⑥	2nd R. F. Transformer	03014	⑦	On-Off Switch	4095
⑦	Compensating Condenser (Part of Tun- ing Condenser Assembly)		⑧	Condenser .001 M. F.	5215
⑧	1st Det. Transformer	03015	⑨	Resistor—13,000 Ohms	3766
⑨	Compensating Condenser (Part of Tun- ing Condenser Assembly)		⑩	Condenser .00011 M. F.	4519
⑩	Condenser .09 M. F. (Double)	4989-C	⑪	Compensating Condenser (Part of Tun- ing Condenser Assembly)	
⑪	Condenser .09 M. F. (Double)	4989-B	⑫	Resistor—5,000 Ohms	3626
⑫	Fixed Condenser .00011 } Assembled	3772-C	⑬	Pilot Bulb	3463
⑬	Compensating Condenser		⑭	R. F. Choke	03086
⑭	1st I. F. Transformer	03009	⑮	Line Cord and Plug	L-943
⑮	Compensating Condenser		⑯	Tube Shield	03002
⑯	Fixed Condenser .00011 } Assembled	03061	⑰	Knob (large) Dial Control	4058-A
⑰	Normal Maximum Switch	3116	⑱	Spring (Dial Knobs)	4147
⑱	Condenser (.00035 mf)	4990	⑲	Knobs (small) Tone and Volume Control	4959-A
⑲	2nd I. F. Transformer	03143	⑳	Knob (switch)	4390-A
㉑	Compensating Condenser		㉑	Grid Clip	4997
㉒	Fixed Condenser .00011 } Assembled	03061	㉒	Speaker Plug and Cable	L-1134-A
㉓	Resistor—50,000 Ohms	4518	㉓	Grommet for R. F. Transformer Shield	3747
㉔	Condenser .00035	4990	㉔	Rectifier Tube Socket	5026
㉕	Resistor—250,000 Ohms	4410	㉕	Four Prong Socket Assembly	4955
㉖	Resistor—1,000,000 Ohms	4400	㉖	Five Prong Socket Assembly	4956
㉗	Condenser .5 M. F. (Double)	03024	㉗	Speaker Socket	4987
㉘	Tone Control	4037-A	㉘	Volume Control Insulator	4092
㉙	1st Audio Transformer	4953	㉙	Volume Control Insulator	4286
㉚	Condensers 2—.25 M. F. and 1—.5 M. F.	03029	㉚	Fahnestock Clip	L-1126
㉛	Condenser .05 M. F.	3615-G	㉛	Finishing Rosettes	4267
㉜	Output Transformer:		㉜	Speaker Mounting Screws (8 used)	W-493
㉝	H ₁ (For Large Cone Assembly)	2848	㉝	Speaker Mounting Screws (1 used)	W-483
㉞	K ₂ (For Small Cone Assembly)	2766	㉞	Dial	5021
㉟	Voice Coil Assembly and Cone:		㉟	Mica for Gang Condenser Compensating Condenser	3473
㊱	H ₂ (Large Cone)	02997	㊱	Insulating Washer for Compensating Condenser	3500
㊲	K ₂ (Small Cone)	02996	㊲	Tuning Condenser Mounting Washer	3614
㊳	Speaker Field—Assembled with Pot and Frame		㊳	Tuning Condenser Mounting Washer	3615
㊴	Resistor—250,000 Ohms	3766	㊴	Tuning Condenser Mounting Sleeve	3616
㊵	Resistor—250,000 Ohms	4410	㊵	Spring for Tuning Condenser	4285
㊶	Filter Choke	4951	㊶	Bezel	5006
㊷	Condenser 6 M. F. Electrolytic Type (50-60 cycles)	4916	㊷	Complete Pilot Bracket	03061-A
㊸	Condenser 10 M. F. Electrolytic Type (25-40 cycles)	5142	㊸	Dial Disc	4926
㊹	Condenser 6 M. F. Electrolytic Type (25-40) and (50-60) cycles	4916	㊹	Light Shield Screen	4937
㊺	B. C. Resistor	4953	㊺	Friction Drive Bracket	4956
㊻	Power Transformer (50 to 60 cycles)	4938	㊻	Brass Collar for Friction Drive	4956
㊼	Power Transformer (25 to 40 cycles)	4956	㊼	Shaft	4951

REPLACEMENT PARTS—MODELS 90 and 90-A RECEIVERS

(Above Serial No. 237,001)

No. on Figs. 3 and 4	Description	Part No.	No. on Figs. 3 and 4	Description	Part No.
①	Resistor (10,000 ohms)	4412	㉟	Voice Coil Assembly and Cone:	
②	First R. F. Transformer	03360	㊱	H ₂ (Large Cone)	02997
③	Gang Condenser (50-60 cycles)	03001	㊲	K ₂ (Small Cone)	02996
④	Gang Condenser (25-40 cycles)	03078	㊳	Speaker Field (Assembled with pot and frame)	
⑤	Compensating Condenser (part of gang condenser assembly)		㊴	By-Pass Condenser (.05 mfd.)	3615-W
⑥	Second R. F. Transformer	03014	㊵	Resistor (490,000 ohms)	4517
⑦	Compensating Condenser (part of gang condenser assembly)		㊶	Oscillator Coil	03016
⑧	First Detector Transformer	03015	㊷	By-Pass Condenser (.09 mfd.) double	4989-G
⑨	Compensating Condenser (part of gang condenser assembly)		㊸	Compensating Condenser } Assembled	03060
⑩	Compensating Condenser (First I. F. Primary)	03315	㊹	Condenser (.0007 mfd.)	
⑪	First I. F. Transformer	03009	㊺	Resistor (51,000 ohms)	4518
⑫	Compensating Condenser (First I. F. Secondary)	03315	㊻	Resistor (5,000 ohms)	5310
⑬	Compensating Condenser (Second I. F. Primary)	03317	㊼	Compensating Condenser (part of tuning condenser assembly)	
⑭	Second I. F. Transformer	03345	㊽	Condenser (110 mmf.)	4519
⑮	Condenser (110 mmf.)	4519	㊾	Resistor (51,000 ohms)	4237
⑯	Resistor (51,000 ohms)	4518	㊿	By-Pass Condenser (.05 mfd.)	3615-U
㉑	Resistor (51,000 ohms)	4518	①	By-Pass Condenser (.05 mfd.)	3615-E
㉒	Resistor (99,000 ohms)	4411	②	Resistor (490,000 ohms)	4517
㉓	By-Pass Condenser (.01 mfd.)	3903-M	③	Resistor (70,000 ohms)	5385
㉔	Condenser (.00025 mfd.)	8082	④	Resistor (25,000 ohms)	4516
㉕	Volume Control	5366	⑤	Resistor (240,000 ohms)	3768
㉖	Resistor (51,000 ohms)	4518	⑥	Condenser (.015 mfd.) double	3793-E
㉗	Resistor (70,000 ohms)	5385	⑦	On-Off Switch	4095
㉘	By-Pass Condenser (.01 mfd.)	3903-M	⑧	Power Transformer (50-60 cycles)	5362
㉙	Condenser (1-1 mfd., 1-13 mfd., 2-25 mfd.)	03325	⑨	Power Transformer (25-40 cycles)	5363
㉚	Resistor (240,000 ohms)	4410	⑩	Power Transformer (50-60 cycles, 220 volts)	5364
㉛	Resistor (35,000 ohms)	3656	⑪	Choke	4951
㉜	Resistor (85,000 ohms)	3656	⑫	Condenser (6 mfd.) Electrolytic type (50-60 cycles)	4916
㉝	By-Pass Condenser (.01 mfd.)	3993-P	⑬	Condenser (10 mfd.) Electrolytic type (25-40 cycles)	5142
㉞	Resistor (340,000 ohms)	4410	⑭	Condenser (6 mfd.) Electrolytic type (50-60 cycles)	4916
㉟	Condenser (.25 mfd., 1 mfd.)	03327	⑮	Condenser (10 mfd.) Electrolytic type (25-40 cycles)	5142
①	Tone Control	4037-A	⑯	B. C. Resistor	5365
②	Output Transformer	2673	⑰	Line Cord and Plug	L-943
			⑱	Tube Shield (Large)	03373



Philco Radio

—●— SPEAKER PLUG AND SOCKET CONNECTIONS.
↓ INDICATES CHASSIS.

Models 90 and 90-A
ABOVE SERIAL NO. 237,001
WITH I-TYPE 47 TUBE

