

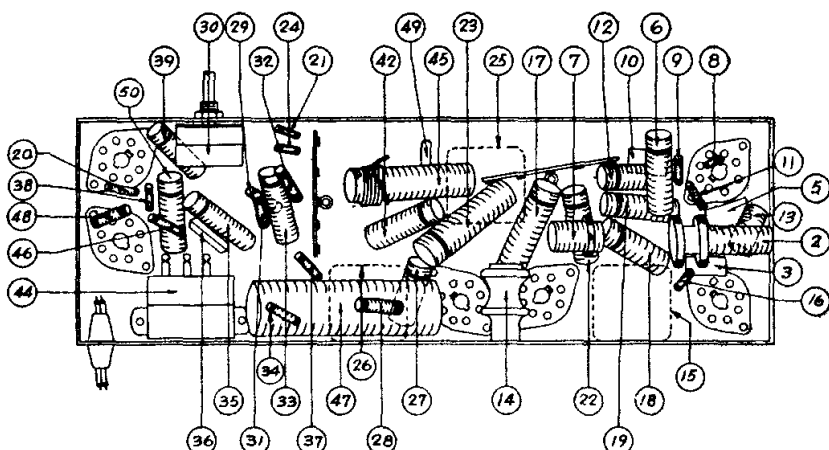
### MODELS 41-842, 41-843, 41-844

These models may be adjusted when operated by battery or 115 volts A.C.-D.C. power.

Operations in Order	SIGNAL GENERATOR		RECEIVER		
	Output Connections to Receiver	Dial Setting	Dial Setting	Control Setting	Adjust Compensators
1	See Paragraph on Signal Generator above	455 K.C.	540 K.C.	Vol. Max.	26A, 25A, 25B, 15A, 15B
2	Use Loop on Generator as above	1500 K.C.	1500 K.C.	Vol. Max.	4B, 4A

# PHILCO

Models 41-842,  
41-843, 41-844



LOCATION OF PARTS — UNDERSIDE OF CHASSIS