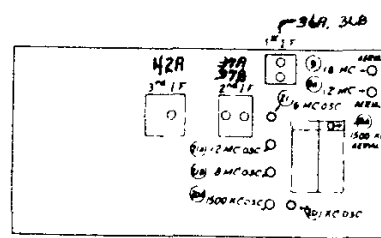
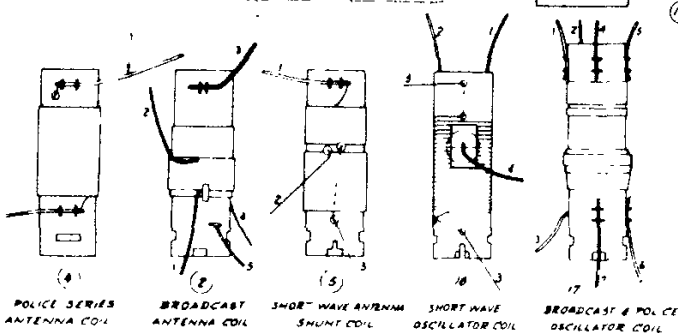
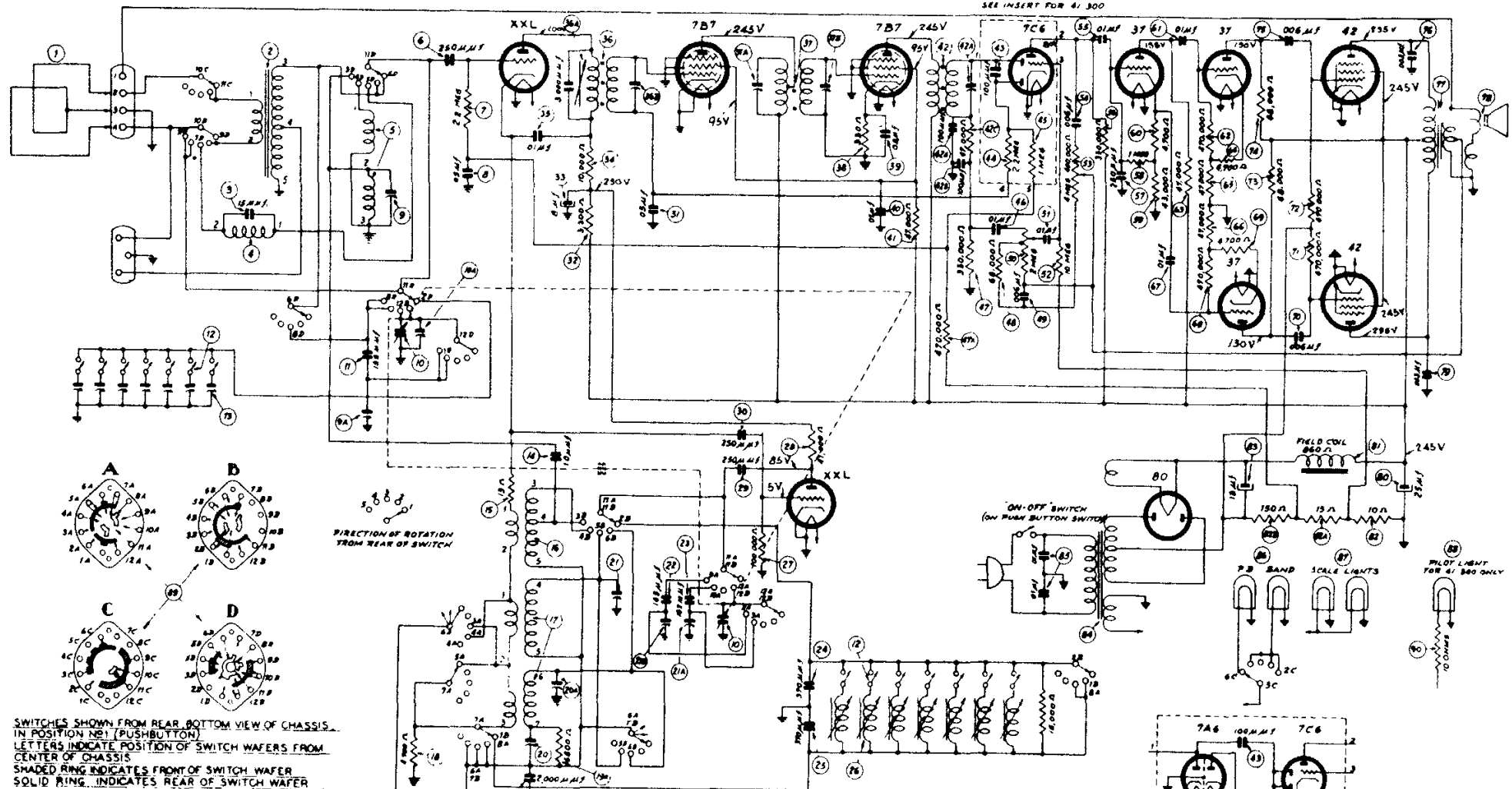


PORTION WITHIN DOTTED LINE
FOR 41-295 ONLY
SEE INSERT FOR 41-300



PHILCO

I.F. = 455 KC.

SCHEMATIC DIAGRAM MODEL 41-295, 41-300

THE VOLTAGES INDICATED WERE MEASURED WITH A PHILCO MODEL 027 VOLTMETER (1000 OHMS PER VOLT) - POWER SUPPLY 115 VOLTS 60 CYCLE - VOLUME CONTROL MINIMUM
NO SIGNAL BEING RECEIVED - RANGE SWITCH "BROADCAST"

THE ABOVE DIAGRAM IS THE COMPLETE ELECTRICAL CIRCUIT FOR MODEL 41-295. THE SAME GENERAL CIRCUIT IS ALSO USED IN MODEL 41-300 WITH THE EXCEPTION OF THE ADDITIONAL 7A6 TUBE IN THE 2ND DETECTOR A V C CIRCUIT. THE WIRING OF THE ADDITIONAL TUBE IS SHOWN IN THE LOWER RIGHT CORNER OF THE SCHEMATIC.