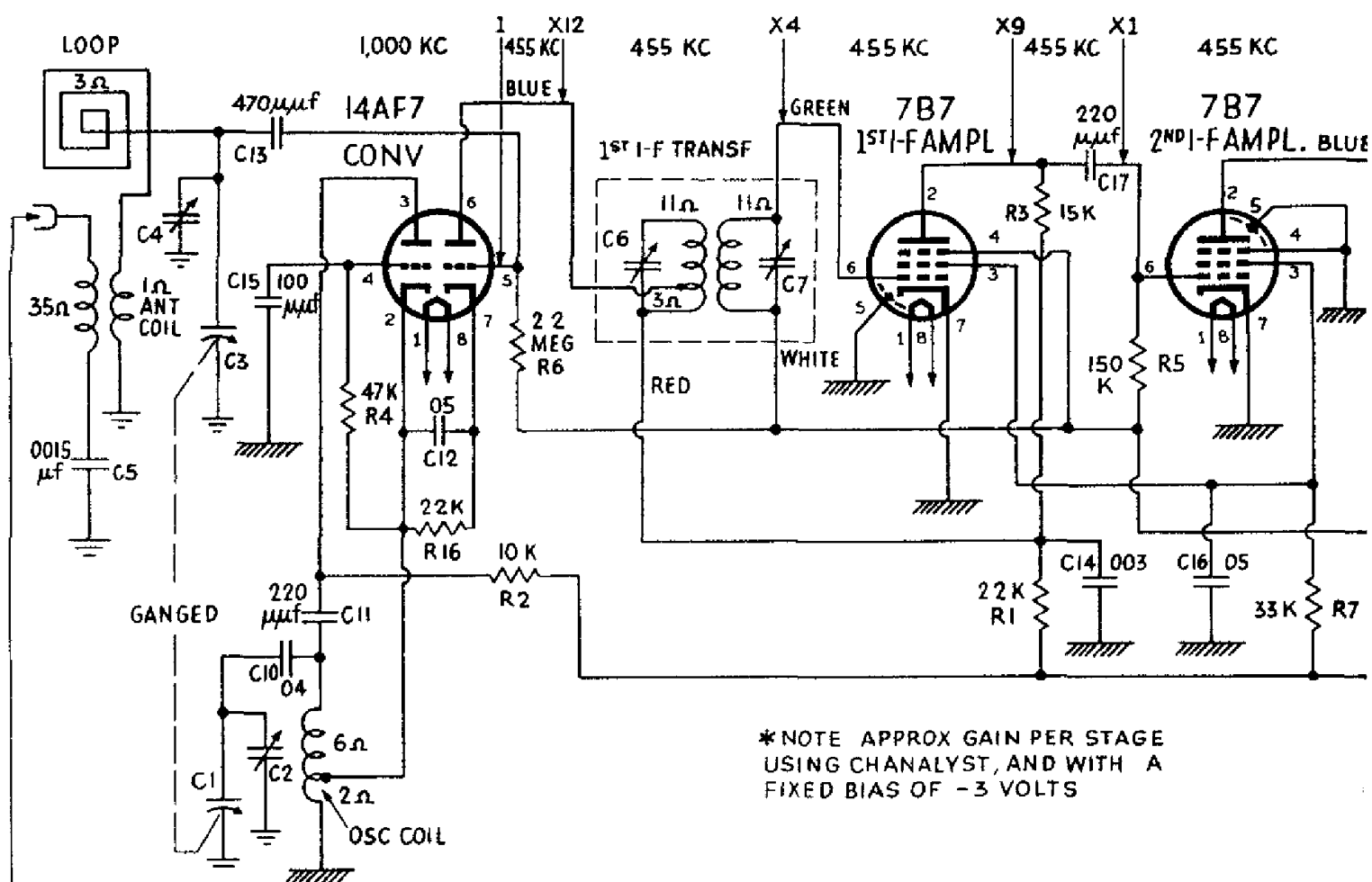
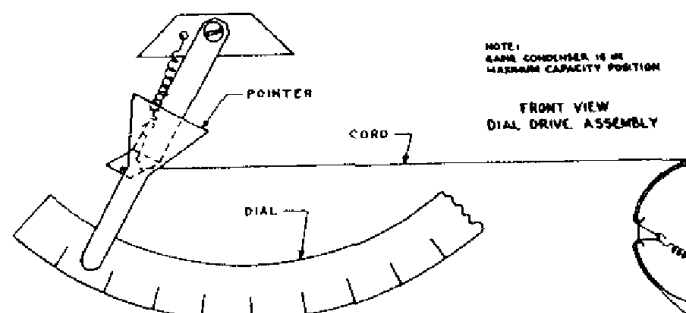
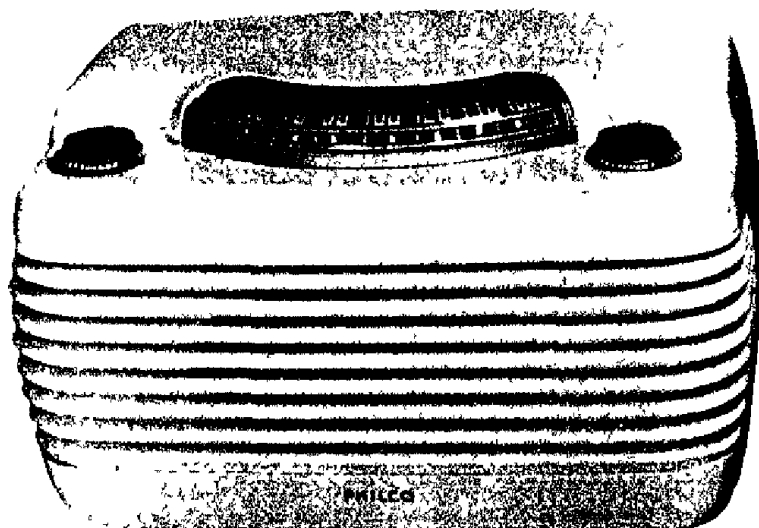
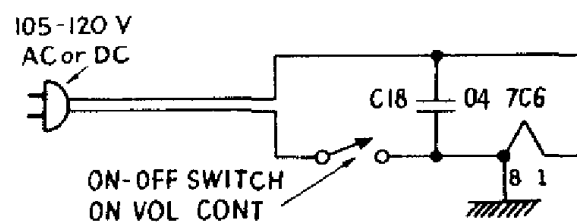


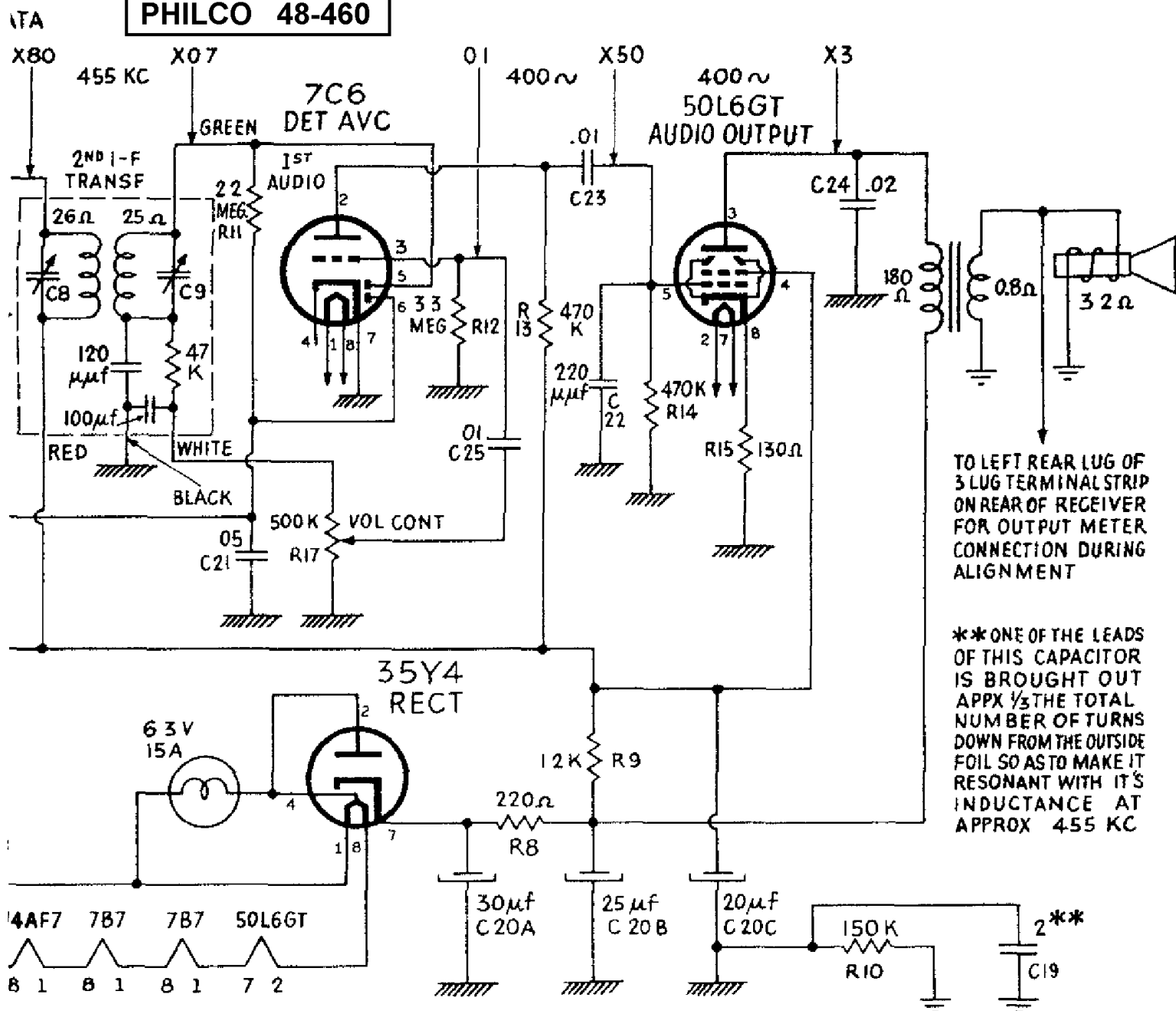
↑ GAIN DA



*NOTE APPROX GAIN PER STAGE
USING CHANALYST, AND WITH A
FIXED BIAS OF -3 VOLTS



PHILCO 48-460



TO LEFT REAR LUG OF 3 LUG TERMINAL STRIP ON REAR OF RECEIVER FOR OUTPUT METER CONNECTION DURING ALIGNMENT

**ONE OF THE LEADS OF THIS CAPACITOR IS BROUGHT OUT APPX 1/3 THE TOTAL NUMBER OF TURNS DOWN FROM THE OUTSIDE FOIL SO AS TO MAKE IT RESONANT WITH IT'S INDUCTANCE AT APPROX 455 KC

