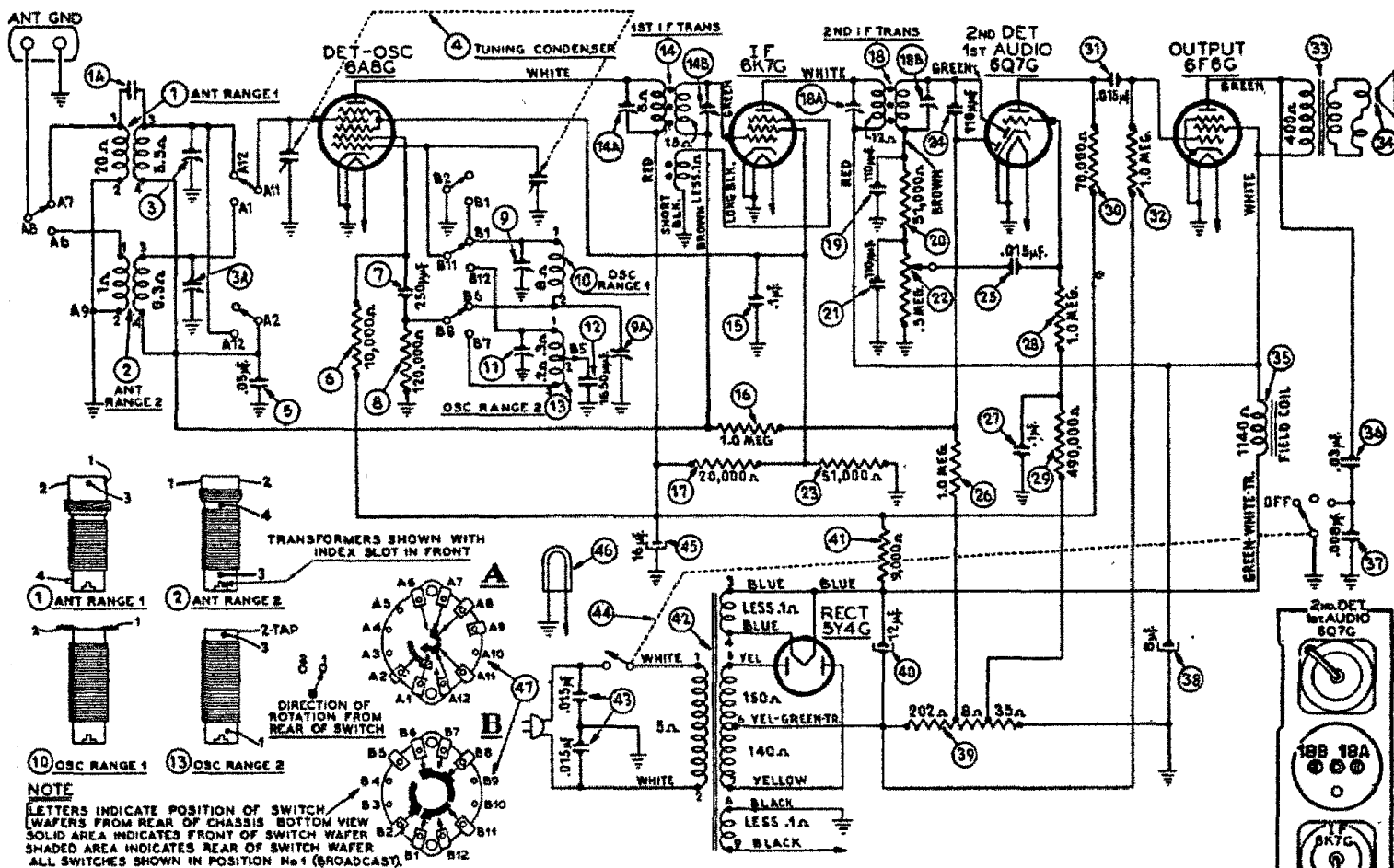


# PHILCO RADIO & TELEV. CORP.

MODEL 38-60, Code 125



## Model 38-60—Code 125

April, 1937

INTERMEDIATE FREQUENCY: 470 K. C.

TUNING RANGE: Two—Range one 530 to 1720 K. C.

Range two 2.3 to 7.4 M. C.

UNDISTORTED OUTPUT: 3 watts.

TONE CONTROL: Two position.

Fig. 2. I. F. Compensators top of chassis

## Electrical Specifications

**TYPE CIRCUIT:** Superheterodyne, with Automatic Volume Control and a pentode audio output circuit.

POWER SUPPLY: Voltage	Frequency	Consumption
115	50 to 60	60 watts
115	25 to 40	60 watts
115/220	50 to 60	60 watts

**PHILCO TUBES USED:** One 6AB6, Det. Osc.; one 6K7G, I. F.; one 6Q7G, 2nd Det. audio; one 6F6G, audio output; and one 5Y4G, Rectifier.

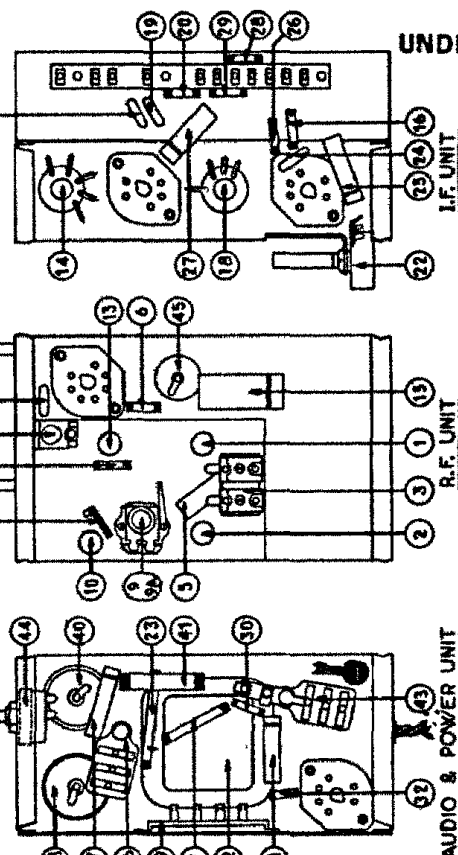


Fig. 4. Part Locations, underside of chassis

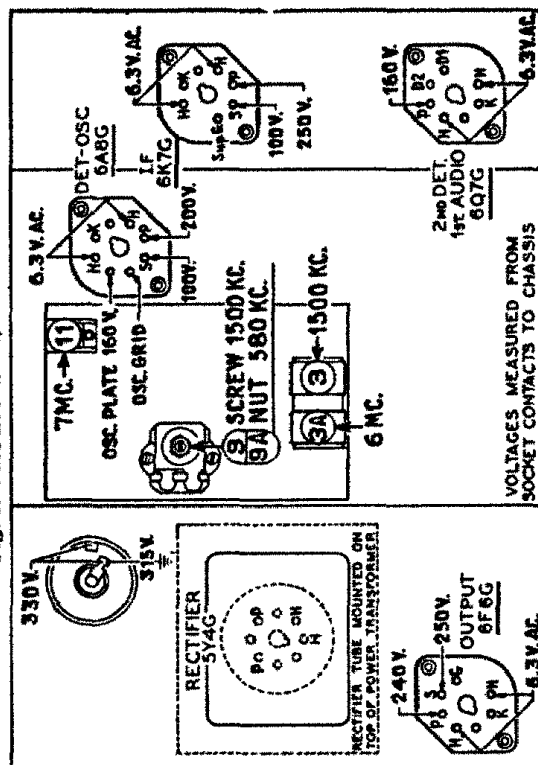


Fig. 1. R. F. Compensators and Voltage Readings, underside of chassis. The voltages indicated by arrows were measured with a Philco 926 Circuit Tester which contains a sensitive voltmeter. Volume control at minimum, range switch in broadcast position, line voltage 115 A. C.