

MODEL 38-40

Replacement Parts
Model 38-40, Code 121

Schem.	Part No.	Description	List Price
1	32-2558	Antenna Transformer (Range 2)	\$0.70
2	32-2667	Antenna Transformer (Range 1)	1.60
3	30-4519	Condenser (.05 mf. tubular)	1.40
4	31-2065	Tuning Condenser	5.00
5	32-2668	Osc. Transformer (Range 2)	1.25
6	32-2659	Osc. Transformer (Range 1)	.50
7	31-6188	Compensator (2 sections)	.50
8	33-412339	Resistor (120,000 ohms, 1/2 W)	.40
9	30-1094	Condenser (3500 mmf.)	.40
10	33-250339	Resistor (5,000 ohms, 1/2 W)	.40
11	32-2580	1st I.F. Transformer	2.20
12	32-2582	2nd I.F. Transformer	2.20
13	33-351439	Resistor (51,000 ohms, 1 W)	.20
14	30-2291	Electrolytic Condenser (8-8 mf.)	.20
15	30-4455	Condenser (.1 mf.)	.25
16	33-310439	Resistor (10,000 ohms, 1 W)	.20
17	33-510339	Resistor (10 meg. 1/2 W)	.20
18	30-1051	Condenser (.10 mmf. mica)	.20
19	33-351339	Resistor (51,000 ohms, 1/2 W part (12)	.20
20	33-5215	Volume Control	1.00
21	30-4358	Condenser (.015 mf. tubular)	.20
22	33-510339	Resistor (10 meg. 1/2 W)	.20
23	33-510339	Resistor (10 meg. 1/2 W)	.20
24	30-4499	Condenser (.1 mf. tubular)	.20
25	33-310539	Resistor (10,000 ohms, 2 W)	.30
26	32-7543	Filter Choke	1.35
27	33-510339	Resistor (10 meg. 1/2 W)	.20
28	30-4444	Condenser (.05 mf. tubular)	.20
29	30-4191	Condenser (.15 mf. tubular)	.20
30	33-240339	Resistor (4,000 ohms, 1/2 W)	.20
31	30-2219	Electrolytic Condenser (25 mf.)	1.50
32	33-449339	Resistor (490,000 ohms, 1/2 W)	.20
33	33-3316	Resistor (250 ohms, 200-8-35 ohms)	.35
34	30-1052	Condenser (.250 mmf. mica)	.25
35	30-4515	Condenser (.015 mf. tubular)	.20
36	33-453339	Resistor (330,000 ohms, 1/2 W)	.20
37	33-449339	Resistor (490,000 ohms, 1/2 W)	.20
38	30-4447	Condenser (.03 mf. tubular)	.20
39	32-7936	Output Transformer	1.00
40	36-3540	Cone & Voice Coil Assembly (KR29)	.20
41	36-3707	Cone & Voice Coil Assembly (HR23)	.20
42	33-399339	Resistor (99,000 ohms, 1/2 W)	.20
43	30-4444	Condenser (.05 mf. tubular)	.20
44	30-4112	Condenser (.008 mf. tubular)	.20
45	42-1393	Tone and Power Switch	.12
46	34-2068	Pilot Lamp bulb	.15
47	32-2866	"A" Choke	.15
48	32-2038	"A" Choke	.40
49	3615DG	Condenser (.05-.05 mf. bakelite)	.40
50	30-4551	Condenser (.5 mf. tubular)	.20
51	30-4481	Condenser (.02 mf. tubular)	.20
52	32-2836	"B" Choke	.20
53	30-4481	Condenser (.02 mf. tubular)	.20
54	32-1954	"B" Choke (Part of 51)	.40
55	30-4296	"A" Choke	.60
56	30-4552	Condenser (.5 mf. metal housing)	.20
57	30-4551	Condenser (.015 mf. tubular)	.20
58	32-7934	Condenser (.5 mf. tubular)	.20
59	32-7934	Power Transformer	.75
60	41-3367	Vibrator	.40
61	42-1358	Range Switch	.40
62	41-3364	able (A.C.)	.40
63	41-3364	able (Battery)	.40
64	41-3369	able-Vibrator ("K" and "X" Cabinet)	.40
65	41-3368	able-Vibrator ("T" cabinet)	.40
66	28-2488	Dial (Dial)	.02
67	28-5002	Zip Mtg. (R.F. Coil)	.02
68	27-5333	Dial	.03
69	27-4598	Dial Washer—Rubber	.03
70	26-5089	Dial Clamp	.10
71	27-4330	Knob (Tuning)	.10
72	27-4331	Knob (Volume)	.10
73	27-4332	Knob (Volume)	.10
74	28-5022	Mtg. Foot (Tuning Condenser)	.04
75	27-4599	Mtg. Rubber (Tuning Condenser)	.04

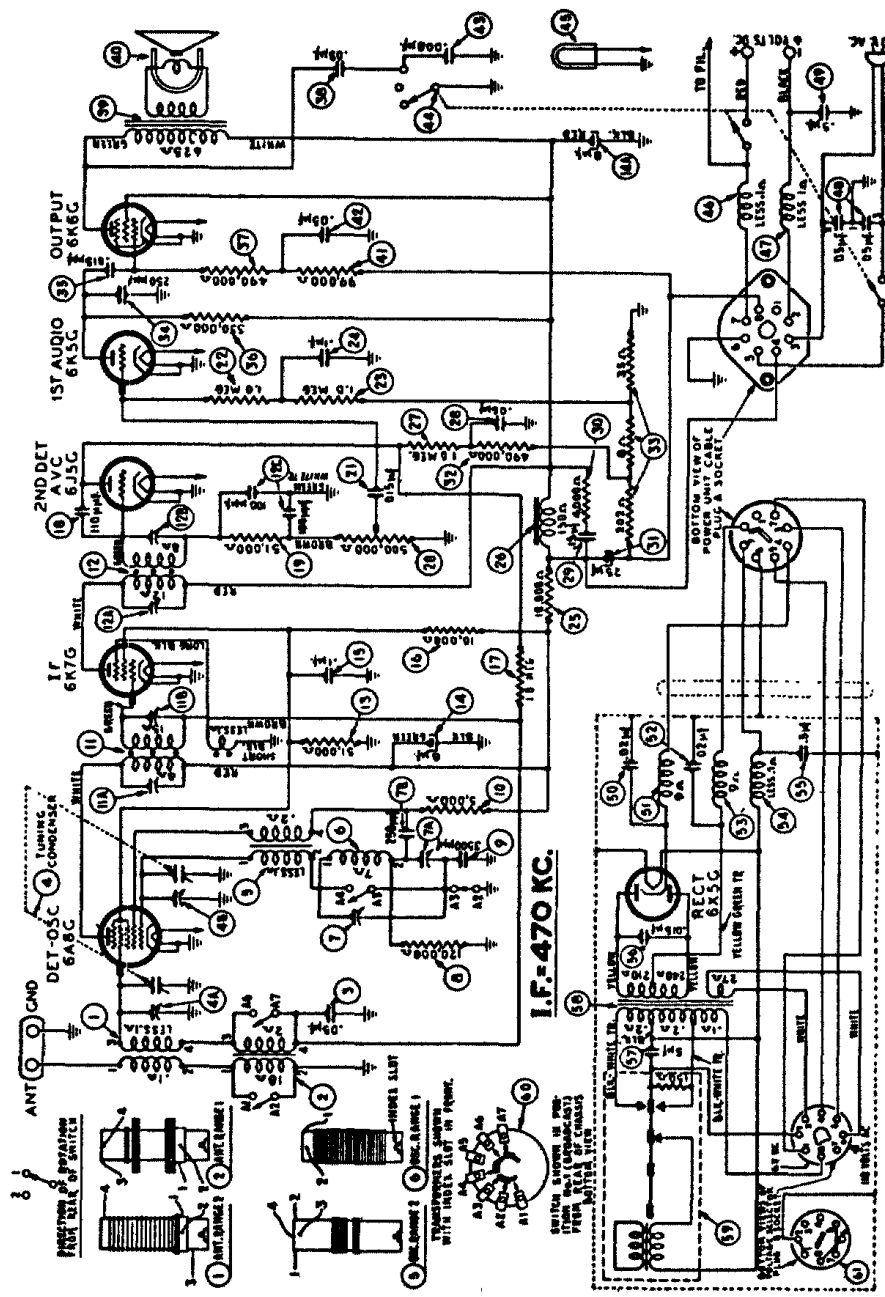


Fig. 4. Schematic Diagram—Model 38-40, Code 121

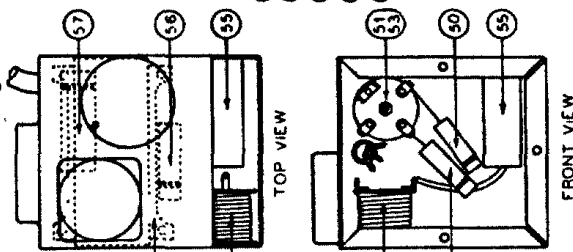


Fig. 5. Vibrator Unit Part Locations

Schem.	Part No.	Description	List Price
1	5189	Mtg. Rubber (Vibrator Unit)	\$0.03
2	27-4585	Mtg. Rubber (Vibrator Unit)	.03
3	W-767	Mtg. Screw (Vibrator Unit)	.35
4	28-6772	Mtg. Spacer (Vibrator Unit)	.10
5	38-8844	Pilot lamp Assy	.15
6	28-9247	61 Plug (Voltage Selector)	.11
7	27-4637	Rubber Sleeve (Vibrator)	.11
8	27-4570	Rubber Bumper (Dial)	.11
9	27-5320	Screen	.90
10	38-9245	Shield (Vibrator)	.01
11	27-6054	Socket (Voltage Selector)	.05
12	27-6058	Socket (Rectifier Tube)	.35
13	27-6086	Socket (6 prong)	.70
14	27-6087	Socket (7 prong)	.06
15	27-6090	Socket (Vibrator)	.06
16	31-2128	Vernier Drive	.01
17	40-6124	Base Plate & Frame	1.05
18	27-8311	Base Gasket	.01
19	27-8298	Base Gasket	.01
20	28-5078	Base Ring	.05
21	W-1821	Base Screw	.06
22	36-1379	Speaker KR29	.70
23	40-6128	Base Plate & Frame Assy	.04
24	27-8313	Base Gasket	.01
25	27-8300	Base Gasket	.01
26	28-5080	Base Ring	.06
27	36-1380	Speaker HR23	.04

Fig. 6. Part Locations, Underside of Chassis

