

# PHILCO RADIO & TELEV. CORP.

MODEL 38-35(121)

## Replacement Parts Model 38-35, Code 121

Schem. No.	Part No.	Description	List Price
1	33-320339	Resistor 20,000 $\Omega$ $\frac{1}{2}$ watt	\$0.20
2	30-1067	Condenser 25 $\mu$ f mica	.20
3	32-2212	Ant. Transformer	1.60
4	30-4518	Condenser .05 $\mu$ f, tubular	.20
5	33-351339	Resistor 51,000 $\Omega$ $\frac{1}{2}$ watt	.20
6	32-2213	Resistor 51,000 $\Omega$ $\frac{1}{2}$ watt	.20
7	30-4453	Osc. Transformer	.70
8	33-310339	Condenser .001 $\mu$ f, tubular	.20
9	33-310339	Resistor 10,000 $\Omega$ $\frac{1}{2}$ watt	.20
10	31-2100	Tuning Condenser	.20
11	31-6186	5X Compensator	.30
12	32-2852	1st. I. F. Transformer	.20
13	32-2854	2nd. I. F. Transformer	.20
14	30-1031	Condenser (.110 $\mu$ f, mica)	.20
15	33-351339	Resistor (51,000 $\Omega$ $\frac{1}{2}$ watt) (Part of 11)	.20
16	30-4444	Condenser (.05 $\mu$ f, tubular)	.20
17	33-325339	Resistor (25,000 $\Omega$ $\frac{1}{2}$ watt)	.20
18	33-325339	Resistor (25,000 $\Omega$ $\frac{1}{2}$ watt)	.20
19	33-5253	Power Switch & Volume Control	.20
20	33-510339	Resistor (1.0 Meg. $\frac{1}{2}$ watt)	.20
21	33-510339	Resistor (1.0 Meg. $\frac{1}{2}$ watt)	.20
22	30-2270	Choke Coil	1.15
23	32-7058	Condenser (.01 $\mu$ f, tubular)	.20
24	30-4514	Condenser (.01 $\mu$ f, tubular)	.20
25	30-1032	Condenser (.01 $\mu$ f, tubular)	.20
26	30-4189	Condenser (.01 $\mu$ f, tubular)	.20
27	32-7836	Output Transformer	1.00
28	36-3540	Cone & Voice Coil Assembly	.20
29	33-419339	Resistor (190,000 $\Omega$ $\frac{1}{2}$ watt)	.20
30	33-449339	Resistor (490,000 $\Omega$ $\frac{1}{2}$ watt)	.20
31	30-4479	Condenser (.01 $\mu$ f, tubular)	.20
32	33-399339	Condenser (.01 $\mu$ f, tubular)	.20
33	30-4479	Condenser (.01 $\mu$ f, tubular)	.20
34	33-540839	Resistor (98,000 $\Omega$ $\frac{1}{2}$ watt)	.20
35	33-540839	Resistor (98,000 $\Omega$ $\frac{1}{2}$ watt)	.20
36	33-1214	Resistor (4.0 meg. $\frac{1}{2}$ watt)	.20
37	33-1214	Resistor (300 $\Omega$ , 1 watt)	.20
38	33-070339	Resistor (70 $\Omega$ , $\frac{1}{2}$ watt)	.20
39	32-2269	"A" Choke	.20
40	32-2269	"A" Choke	.20
41	32-2269	"B" Choke	.20
42	3615DG	Condenser (.5 mfd., tubular)	.40
43	32-2856	Condenser (.05-.05 $\mu$ f, Bakelite)	.40
44	32-1984	"A" Choke	.90
45	30-4481	Condenser (.02 $\mu$ f, tubular)	.20
46	30-4481	Condenser (.02 $\mu$ f, tubular)	.20
47	30-4481	Condenser (.02 $\mu$ f, tubular)	.20
48	32-2856	Condenser (.5 mfd., tubular)	.40
49	32-2856	Condenser (.5 mfd., tubular)	.40
50	32-2856	Condenser (.5 mfd., tubular)	.40
51	32-2856	Condenser (.5 mfd., tubular)	.40
52	32-2856	Condenser (.5 mfd., tubular)	.40
53	32-2856	Condenser (.5 mfd., tubular)	.40
54	32-2856	Condenser (.5 mfd., tubular)	.40
55	32-2856	Condenser (.5 mfd., tubular)	.40
56	32-2856	Condenser (.5 mfd., tubular)	.40
57	32-2856	Condenser (.5 mfd., tubular)	.40
58	32-2856	Condenser (.5 mfd., tubular)	.40
59	32-2856	Condenser (.5 mfd., tubular)	.40
60	32-2856	Condenser (.5 mfd., tubular)	.40
61	32-2856	Condenser (.5 mfd., tubular)	.40
62	32-2856	Condenser (.5 mfd., tubular)	.40
63	32-2856	Condenser (.5 mfd., tubular)	.40
64	32-2856	Condenser (.5 mfd., tubular)	.40
65	32-2856	Condenser (.5 mfd., tubular)	.40
66	32-2856	Condenser (.5 mfd., tubular)	.40
67	32-2856	Condenser (.5 mfd., tubular)	.40
68	32-2856	Condenser (.5 mfd., tubular)	.40
69	32-2856	Condenser (.5 mfd., tubular)	.40
70	32-2856	Condenser (.5 mfd., tubular)	.40
71	32-2856	Condenser (.5 mfd., tubular)	.40
72	32-2856	Condenser (.5 mfd., tubular)	.40
73	32-2856	Condenser (.5 mfd., tubular)	.40
74	32-2856	Condenser (.5 mfd., tubular)	.40
75	32-2856	Condenser (.5 mfd., tubular)	.40
76	32-2856	Condenser (.5 mfd., tubular)	.40
77	32-2856	Condenser (.5 mfd., tubular)	.40
78	32-2856	Condenser (.5 mfd., tubular)	.40
79	32-2856	Condenser (.5 mfd., tubular)	.40
80	32-2856	Condenser (.5 mfd., tubular)	.40
81	32-2856	Condenser (.5 mfd., tubular)	.40
82	32-2856	Condenser (.5 mfd., tubular)	.40
83	32-2856	Condenser (.5 mfd., tubular)	.40
84	32-2856	Condenser (.5 mfd., tubular)	.40
85	32-2856	Condenser (.5 mfd., tubular)	.40
86	32-2856	Condenser (.5 mfd., tubular)	.40
87	32-2856	Condenser (.5 mfd., tubular)	.40
88	32-2856	Condenser (.5 mfd., tubular)	.40
89	32-2856	Condenser (.5 mfd., tubular)	.40
90	32-2856	Condenser (.5 mfd., tubular)	.40
91	32-2856	Condenser (.5 mfd., tubular)	.40
92	32-2856	Condenser (.5 mfd., tubular)	.40
93	32-2856	Condenser (.5 mfd., tubular)	.40
94	32-2856	Condenser (.5 mfd., tubular)	.40
95	32-2856	Condenser (.5 mfd., tubular)	.40
96	32-2856	Condenser (.5 mfd., tubular)	.40
97	32-2856	Condenser (.5 mfd., tubular)	.40
98	32-2856	Condenser (.5 mfd., tubular)	.40
99	32-2856	Condenser (.5 mfd., tubular)	.40
100	32-2856	Condenser (.5 mfd., tubular)	.40

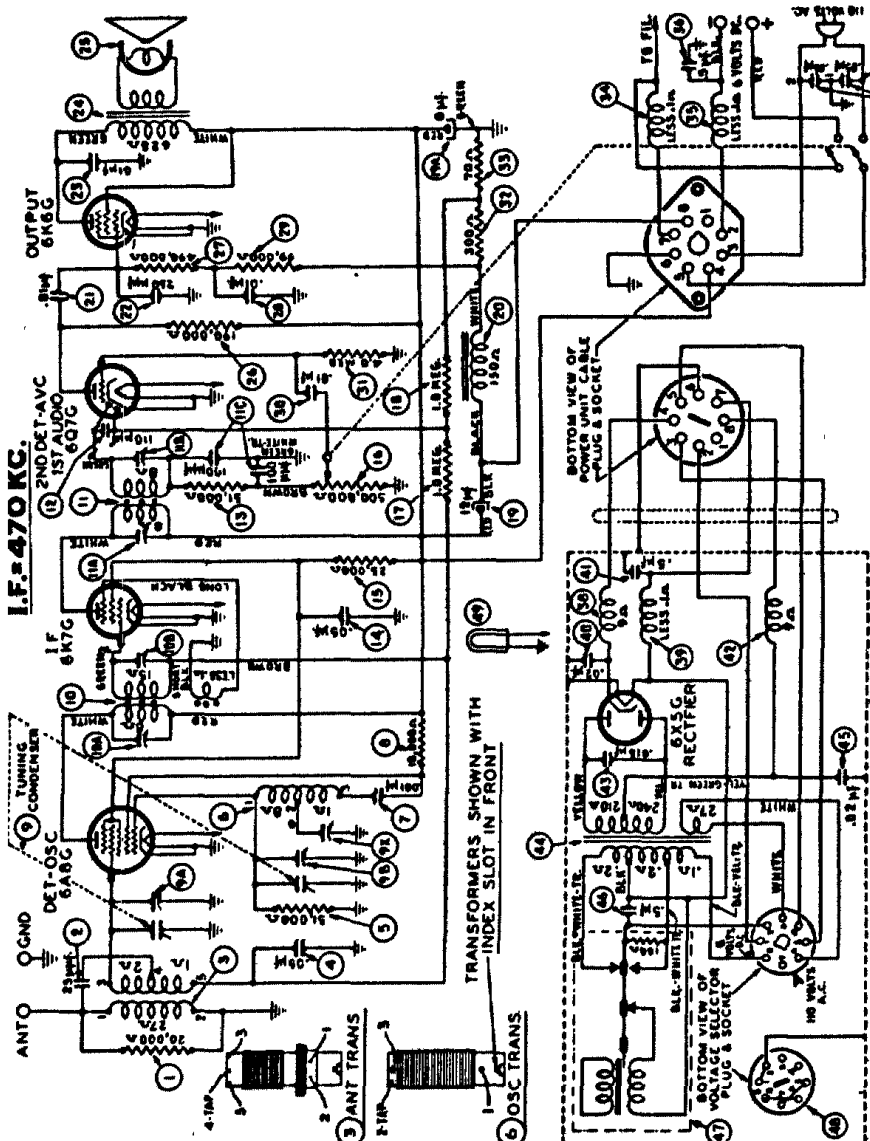


Fig. 4. Schematic Diagram—Model 38-35, Code 121

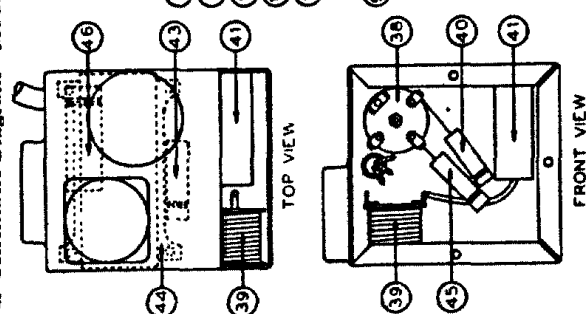


Fig. 5. Vibrator Part Locations

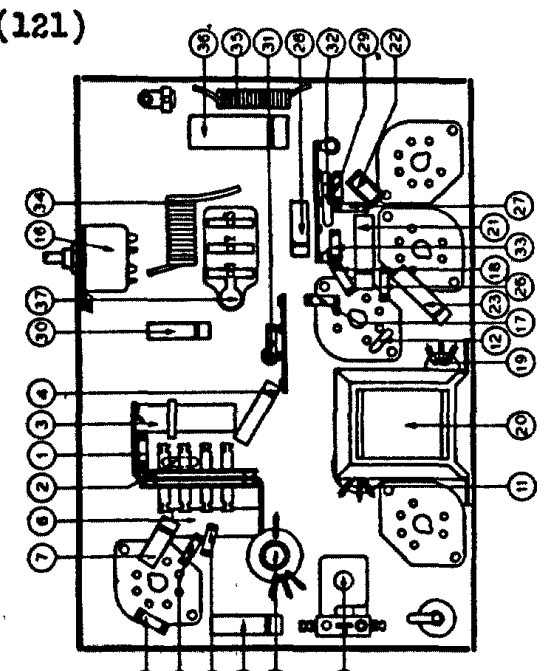


Fig. 6. Part Locations Underside of Chassis