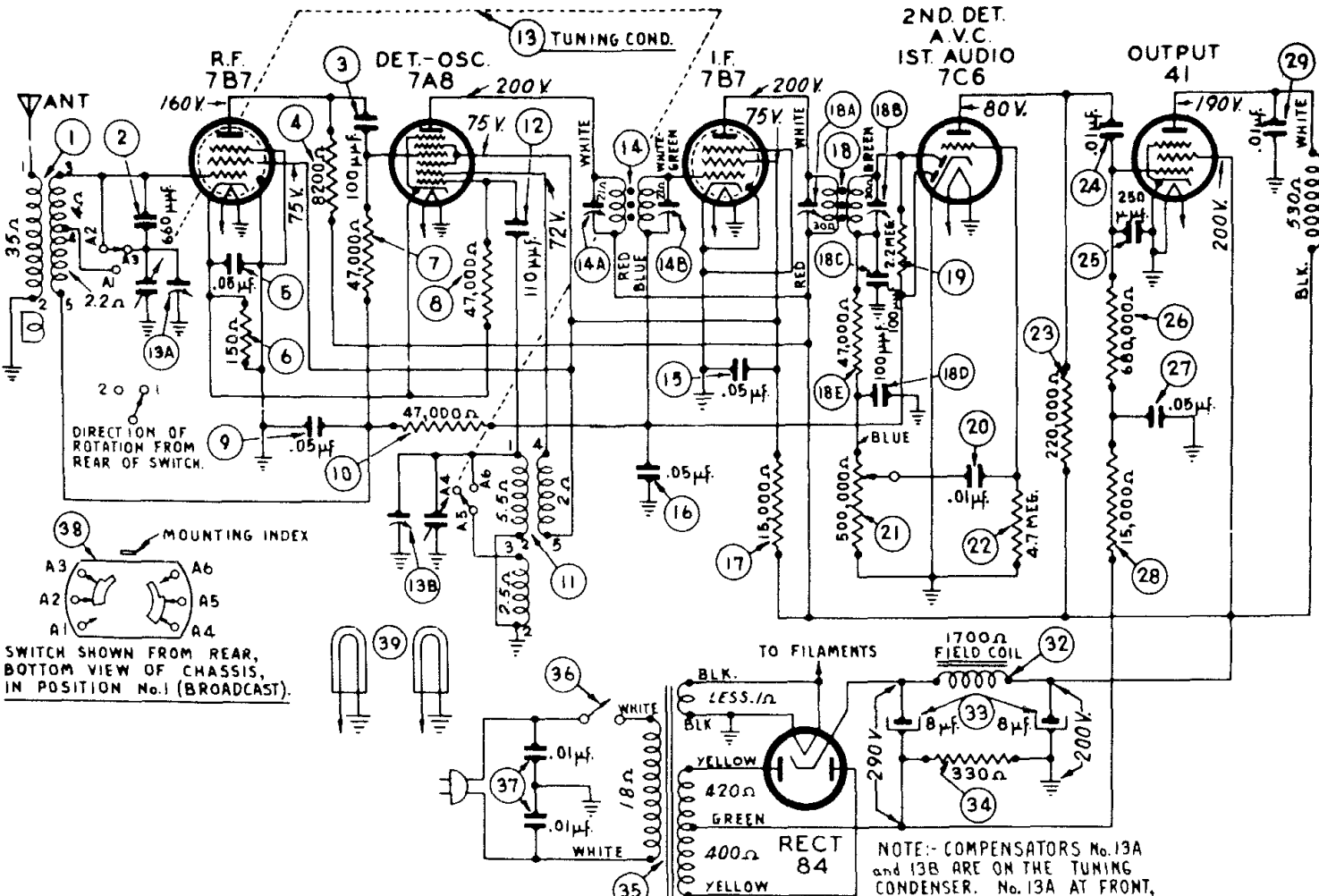
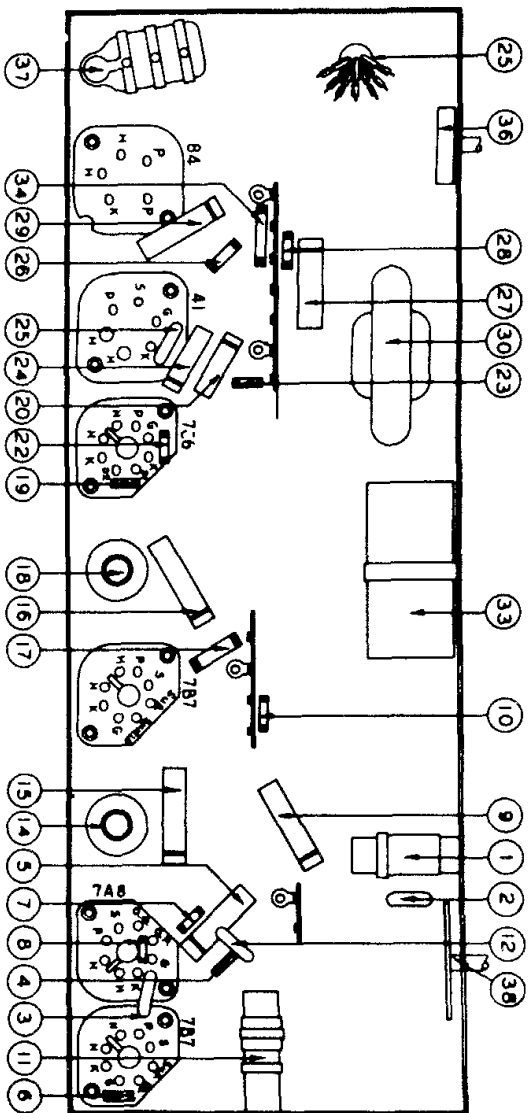


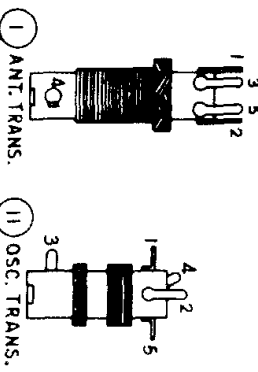
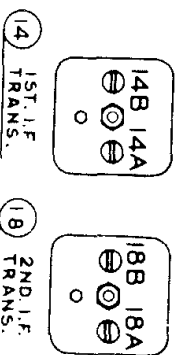
PHILCO

Model 40-158



NOTE: COMPENSATORS No. 13A and 13B ARE ON THE TUNING CONDENSER. No. 13A AT FRONT, No. 13B AT REAR.

I.F. = 455 KC.



SCHE. No.	DESCRIPTION	PART No.
1	Antenna Transformer	32-3303
2	Mica Condenser (660 mmfd.)	30-1136
3	Mica Condenser (100 mmfd.)	30-1128
4	Resistor (8200 ohms, 1/2 watt)	33-282339
5	Tubular Condenser (.05 mfd.)	30-4519
6	Resistor (150 ohms, 1/2 watt)	33-115339
7	Resistor (47,000 ohms, 1/2 watt)	33-347339
8	Resistor (47,000 ohms, 1/2 watt)	33-347339
9	Tubular Condenser (.05 mfd.)	30-4519
10	Resistor (47,000 ohms, 1/2 watt)	33-347339
11	Oscillator Transformer	32-3255
12	Mica Condenser (310 mmfd.)	30-1130
13	1st I.F. Transformer Assy.	31-2418
14	Tubular Condenser (.05 mfd.)	30-4519
15	Tubular Condenser (.05 mfd.)	30-4519
16	Resistor (35,000 ohms, 1 watt)	33-315439
17	2nd I.F. Transformer Assembly	32-3211
18	Resistor (2.2 meg., 1/2 watt)	33-522339
19	Tubular Condenser (.01 mfd.)	30-4572
20	Volume Control (500,000 ohms)	33-5319
21	Resistor (4.7 meg., 1/2 watt)	33-547339
22	Resistor (220,000 ohms, 1/2 watt)	33-422339
23	Tubular Condenser (.01 mfd.)	30-4572
24	Mica Condenser (250 mmfd.)	61-0033
25	Resistor (680,000 ohms, 1/2 watt)	33-468339
26	Tubular Condenser (.05 mfd.)	30-4519
27	Resistor (15,000 ohms, 1/2 watt)	33-315339
28	Tubular Condenser (.01 mfd.)	30-4501
29	Output Transformer	32-8056
30	Cone and Voice Coil Assembly (Speaker Part No. 36-1480-3)	36-4086
31	Field Coil (Replace Speaker Part No. 36-1480)	30-2447
32	Elec. Cond. (8-8 mfd., 450 V.)	32-8076
33	Resistor (330 ohms, 1 watt)	33-133439
34	Power Transformer (115-130 V., 50-60 cycles)	32-8055
35	A.C. Switch (25 cycle)	42-1545
36	Bakelite Cond. (.01-.01 mfd.)	3903-DG
37	Wave Switch	42-1494
38	Pilot Lamps	34-2064