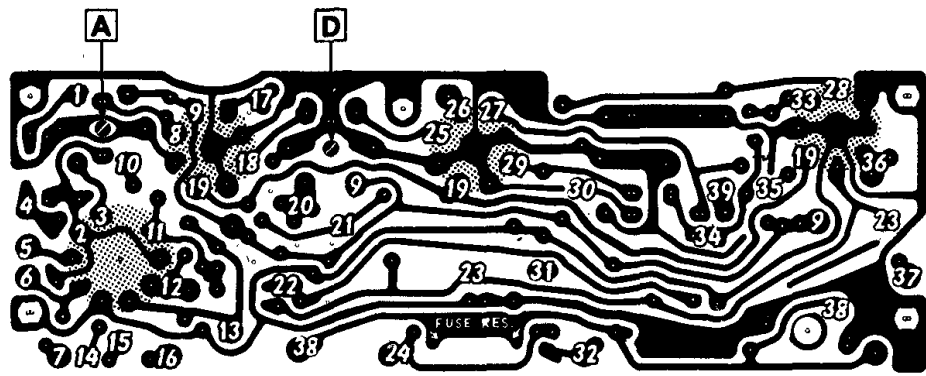
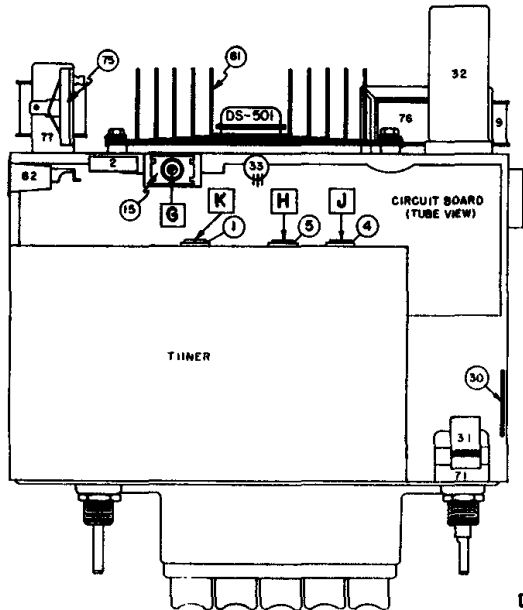
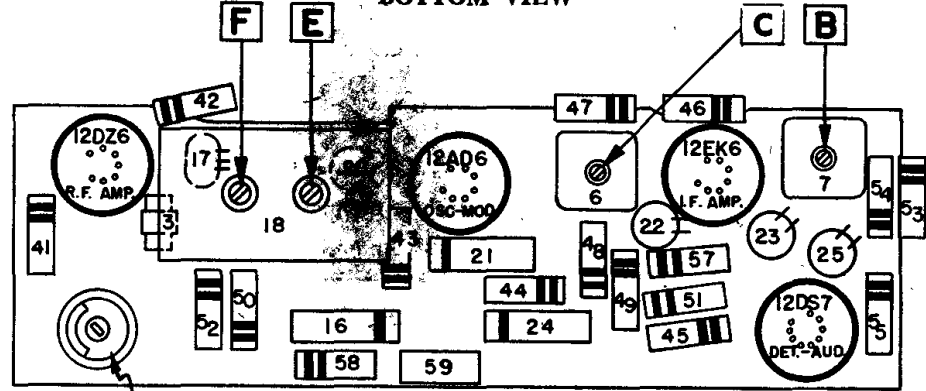


DELCO

PONTIAC MODEL 989693



BOTTOM VIEW

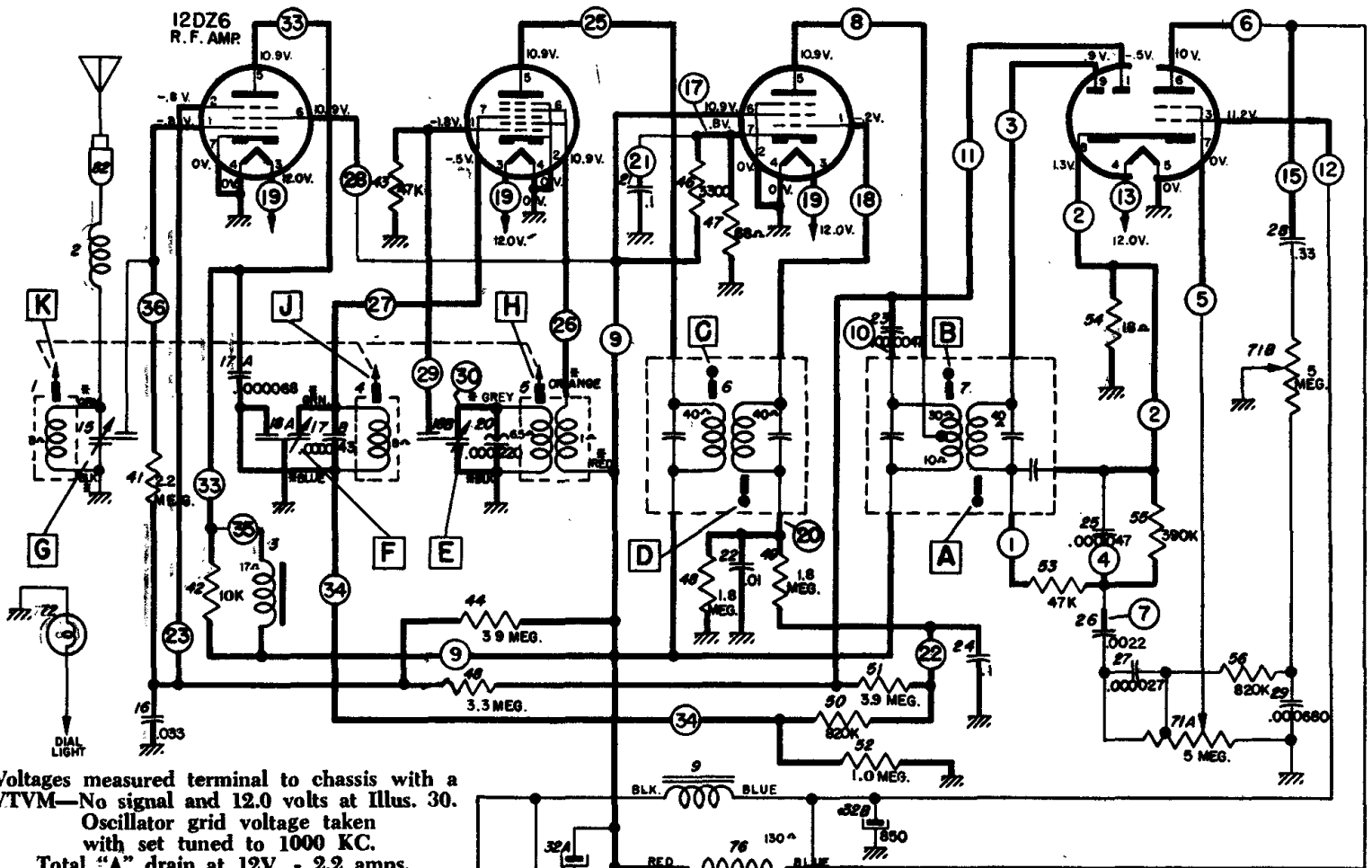


12AD6
DSC-MOD.

12EK6
I.F. AMP.

TOP VIEW

12DS7
DET.-AUD.



Voltages measured terminal to chassis with a VTVM—No signal and 12.0 volts at Illus. 30.

Oscillator grid voltage taken with set tuned to 1000 KC.

Total "A" drain at 12V. - 2.2 amps.

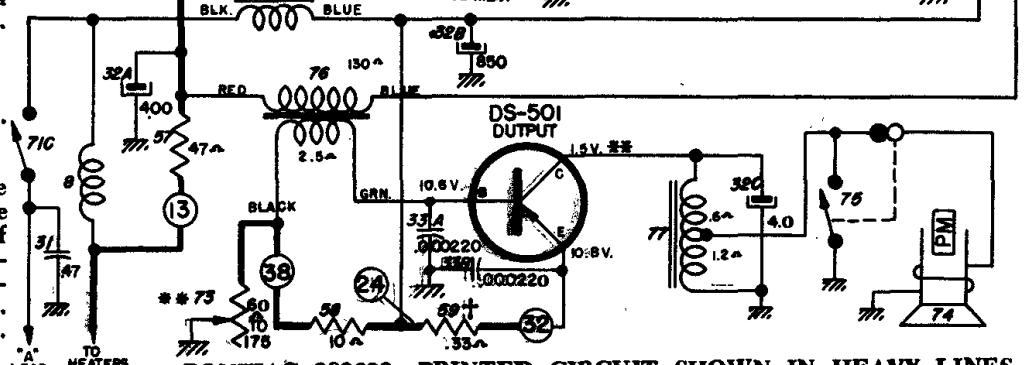
Transistor collector current—1 amp.

Tolerance on voltages $\pm 10\%$

*—Indicates lead from tuner coil ass'y.

**—Before measuring transistor voltages, the shorting-type speaker socket must be opened and a 4 ohm speaker connected, if transistor is replaced, adjust bias potentiometer (Illus. 73) to obtain proper collector voltage with 12 volts input to radio.

†—Illus. 59 is a fuse resistor for the transistor. Service with exact replacement.



PONTIAC 989693—PRINTED CIRCUIT SHOWN IN HEAVY LINES.