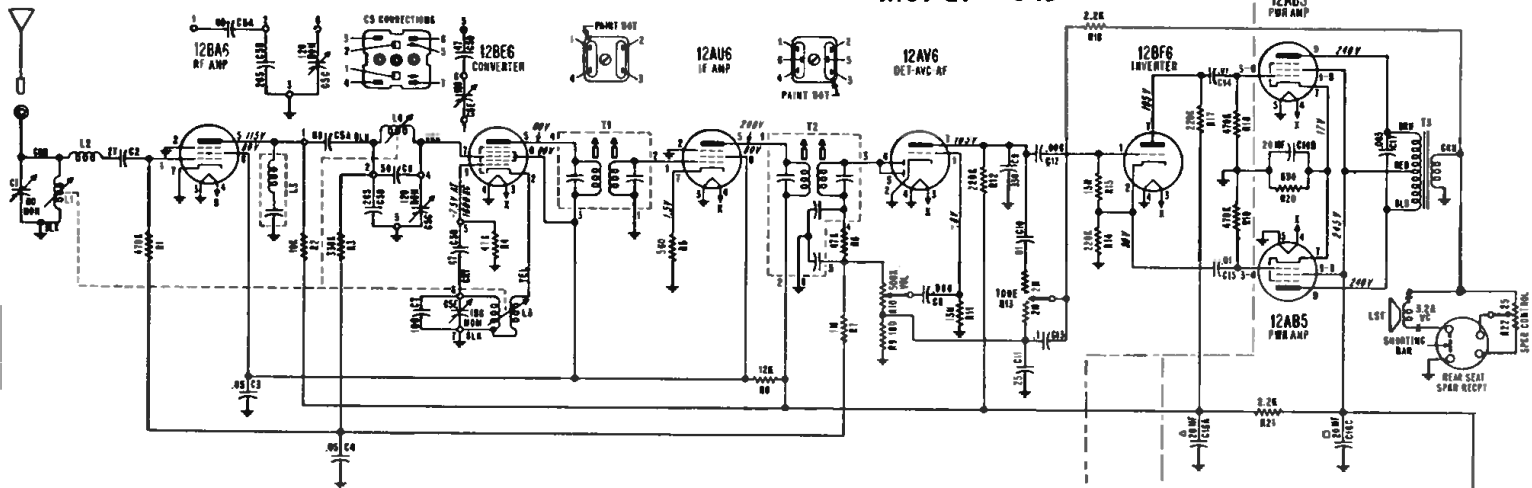


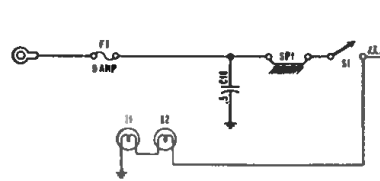
MODELS

MoPar 841
MoPar 842
MoPar 843

Model 841 - Plymouth P28, P29
Model 842 - Dodge D62, D63
Model 843 - DeSoto S23, S24

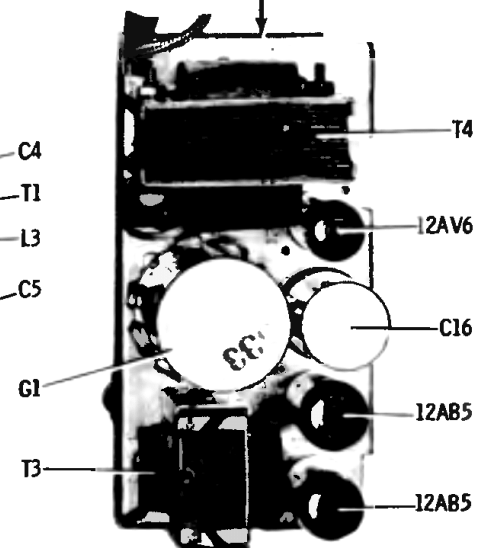
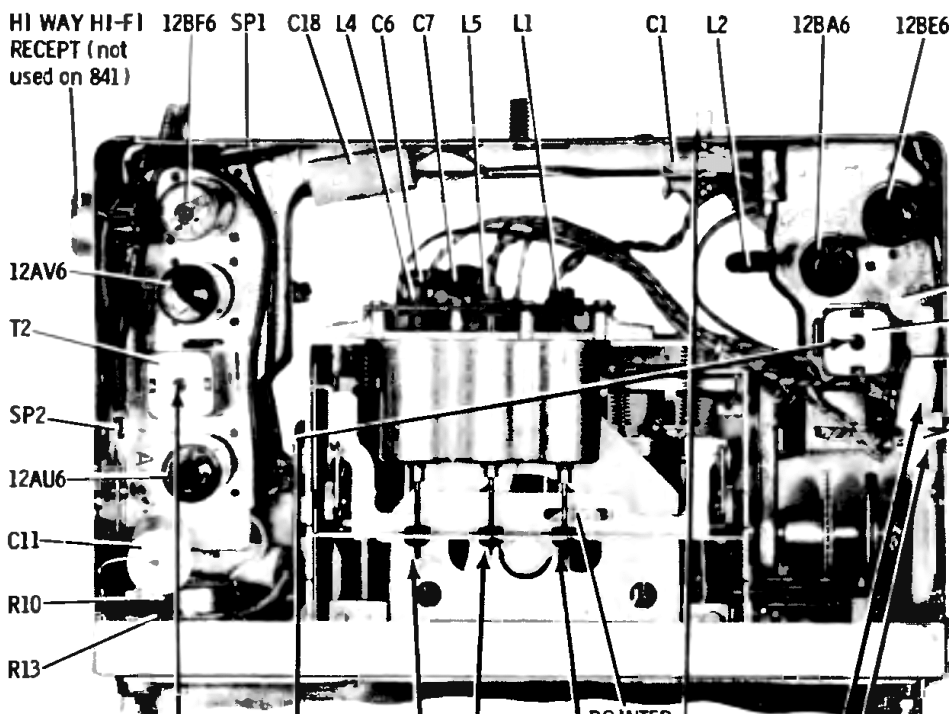


The circuit above is exact for Model 841. Models 842 and 843 are practically identical except for a HI-FI input receptacle.



Capacitors - Decimal values in μ F, all others in MMF unless otherwise specified.
Voltages - Measured from point indicated to chassis with a VTVM. No signal input. $\pm 30\%$
Input voltage at switch 13.2V

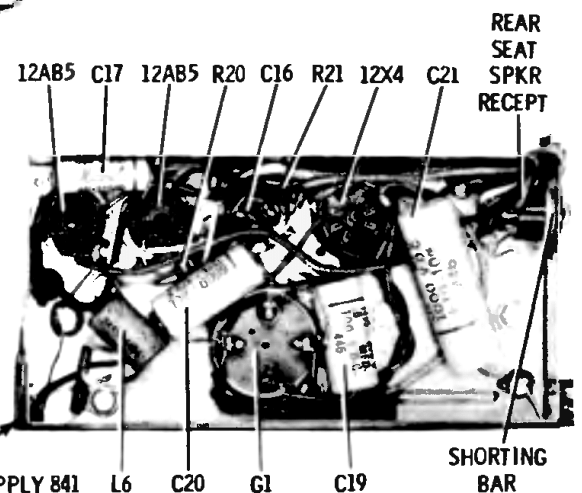
TOP VIEW POWER SUPPLY 841, 842 & 843



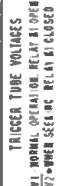
- | | | |
|------------------------------------|--------------------------|--------------------------|
| 2nd IF
262 KC
TOP ③
BOT ④ | ANT CORE
1000 KC
⑩ | ANT TRIM
1615 KC
⑦ |
| 1st IF
262 KC
TOP ①
BOT ② | OSC CORE
1000 KC
⑧ | RF TRIM
1615 KC
⑥ |
| | RF CORE
1000 KC
⑨ | OSC TRIM
1615 KC
⑤ |

ALIGNMENT ADJUSTMENTS & PARTS LOCATIONS

BOTTOM VIEW POWER SUPPLY 841



MoPar	910
MoPar	911



TYPE - Automotive type superheterodyne receiver incorporating a search tuner. These receivers are custom designed for installation in the following cars:

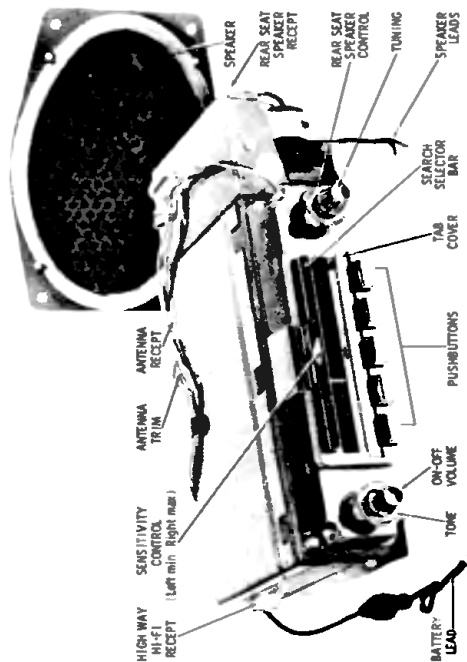
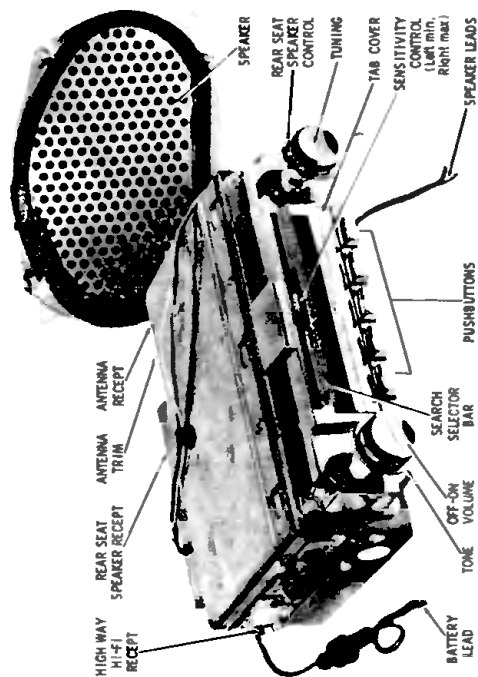
Mopar 910 - Dodge D62, D63

Mopar 911 - DeSoto S23, S24

TUNING RANGE - 540 to 1610Kc IF - 262 Kc

TO SET PUSHBUTTONS

1. Turn receiver on and allow to operate for fifteen minutes. Antenna should be fully extended.
2. Open the hinged tab cover below the dial scale, exposing the five red pushbutton setting tabs.
3. Starting at left end of dial, tune in manually first desired station and move the first pushbutton setting tab until it lines up with the dial pointer tip.
4. Repeat step 3 for the remaining pushbutton setting tabs.
5. Check the settings of each pushbutton setting tab by depressing the corresponding station selector button. If the station is not tuned in exactly, readjust the tab.
6. Pushbutton setting should be done in sequence from left to right, using the pushbutton setting tabs in the same sequence.

**MODEL 910**

MODEL 911