



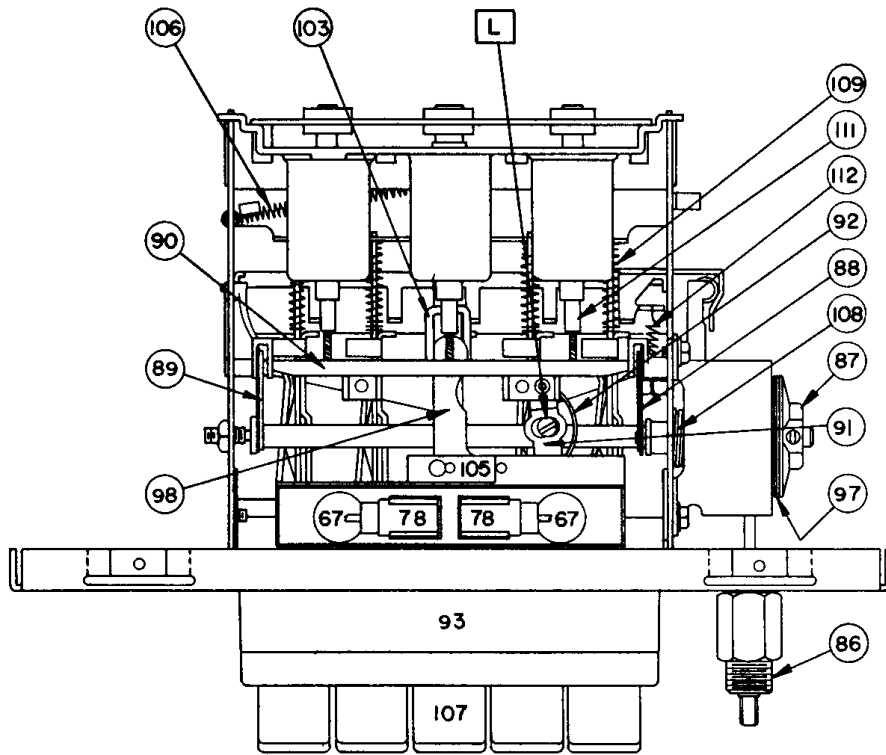
PONTIAC MODEL 984961

TUBE SOCKETS SHOWN FROM TERMINAL VIEW. VOLTAGES MEASURED TERMINAL TO CHASSIS WITH A VTVM. NO SIGNAL AT ILLUS. 29. OSCILLATOR VOLTAGE TAKEN WITH SET TUNED TO 1000 KC.

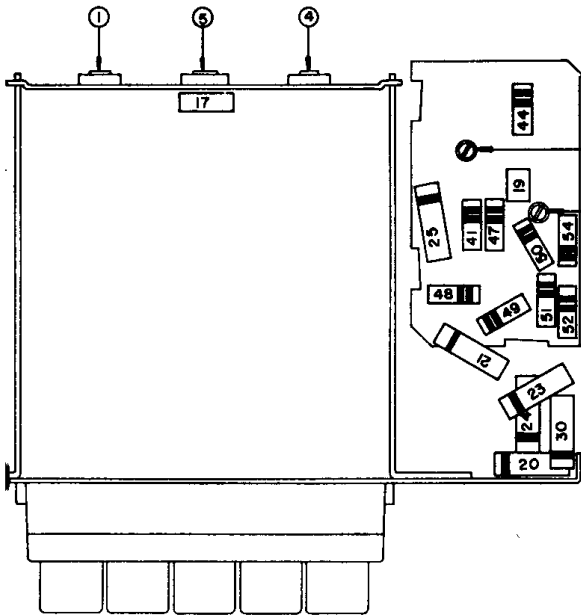
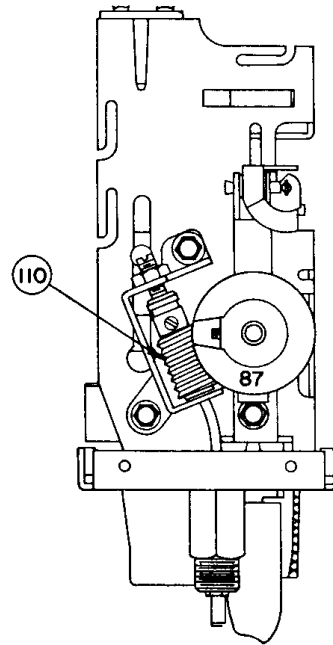
TOTAL "A" DRAIN 3.3 AMP.
 TOTAL "B" DRAIN 65 MA.
 TOLERANCE ON VOLTAGES $\pm 10\%$
 3 - COLORS OF TERMINALS ON SERVICE PARTS
 * - INDICATES LEADS FROM TUNER COIL ASS'Y

Δ—SOME RADIOS HAVE ILLUSTRATION 31 OMITTED AND USE A .008 MFD. BUFFER (ILLUST. 33)

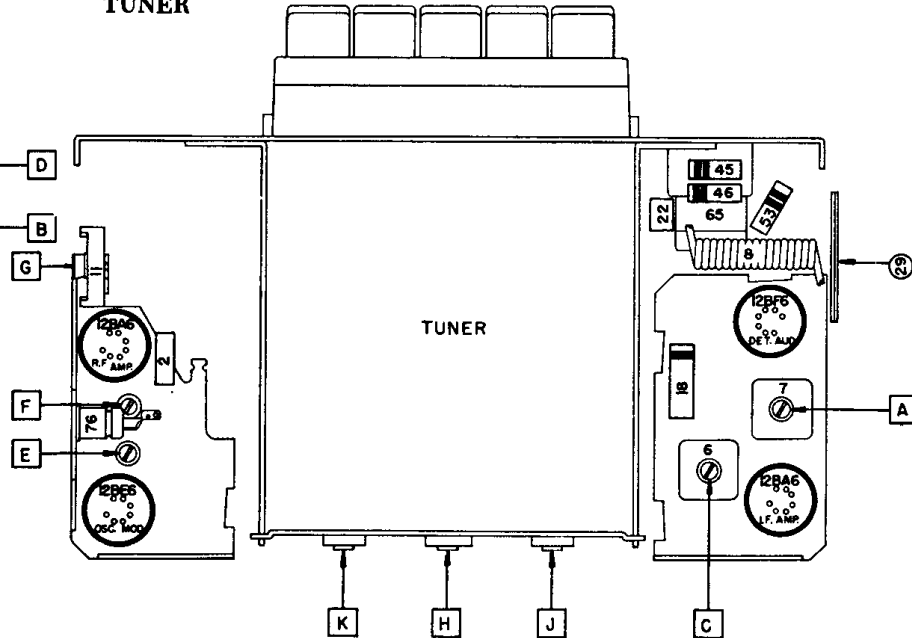
UNITED MOTORS
Pontiac Model 984961



TUNER



LAYOUT — CHASSIS VIEW (RADIO)



PARTS LAYOUT — TUBE VIEW (RADIO)

Steps	Series Capacitor or Dummy Antenna	Connect to	Signal Generator Frequency	Tune Receiver to	Adjust in Sequence For Max. Output
1	0.1 Mfd.	12BE6 Grid (Pin # 7)	262 KC	High Frequency Stop	A, B, C, D
2	0.000068 Mfd.	Antenna Connector	1615 KC	High Frequency Stop	*E, F, G
3	0.000068 Mfd.	Antenna Connector	1000 KC	Signal Generator Signal	J, K
4	0.000068 Mfd.	Antenna Connector	1615 KC	High Frequency Stop	F, G
5	0.000068 Mfd.	Antenna Connector	1000 KC	Signal Generator Signal	**L

*Before making this adjustment check the mechanical setting of the oscillator core "H." The slotted end of core should be $1\frac{1}{2}$ " from the mounting end of the coil form. (This measurement is readily made by inserting a suitable plug in the mounting end of the coil form.) If adjustment is necessary, first dissolve the glyptal seal on the studs. Core adjustment should be made with an insulated screwdriver and core studs should be re-sealed in place with glyptal or household cement after alignment.

**"L" is the pointer adjustment screw which is on the pointer connecting link (see tuner drawing) and should be adjusted so the pointer reads 1000 KC. (Dot between 9 and 11.)

With the radio installed and the car antenna plugged in adjust the antenna trimmer "C" for maximum volume with the radio tuned to a weak station between 600 and 1000 KC. (See sticker on case.)