

SERVICE NOTES

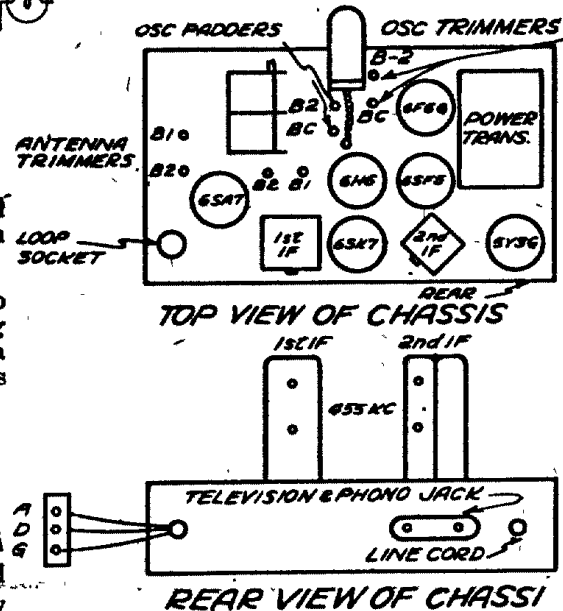
The location of all adjustments used in re-aligning this receiver, and the frequencies at which these adjustments should be made, are shown in the accompanying diagram.

When aligning the I. F. amplifier, the generator must be connected to the grid of the 6SA7 tube through a .1 mfd condenser. When aligning the receiver on the Broadcast Band, connect the generator to the Antenna wire through a .0002 mfd condenser, and on the two short wave bands use a 400 ohm carbon resistor.

ANTENNA

This receiver contains the latest type of self-contained loop aerial and will give excellent results even in distant localities where the signal from the broadcasting stations are faint. However, it may be necessary to turn the cabinet toward the direction of the incoming signal (since most broadcasting stations use the directional antennas), for the best reception from that particular station. For short wave or distant broadcast band reception, the use of an external antenna is required.

When using a doublet antenna, connect one lead-in wire to terminal "A" at the rear of the chassis, and the other lead-in wire to terminal "D". Remove the connecting link from terminals "D" and "G" and connect terminal "G" to a ground such as a cold water pipe or radiator. If an ordinary single wire antenna is used, connect the lead-in wire to Terminal "A" on the rear of the chassis. Leave the link between "D" and "G" terminals and connect a ground wire under terminal "G". A doublet antenna kit complete with all accessories, can be purchased from your dealer. Ask to see the "Pilot Antenna Kit".



TUBE LINEUP
6SA7-CONVERTER
6SK7-I.F.
6H6-2nd Det.-AVC
6SF5-1st A.F.
6F6G-OUTPUT
5Y3G-RECTIFIER
6U5-TUNING INDICATOR
OSC PADDERS
BC-600 KC
B1-2.5 MC
B2-6 MC
ANT. TRIMMERS
BC-1500 KC
B1-22 MC
B2-6 MC