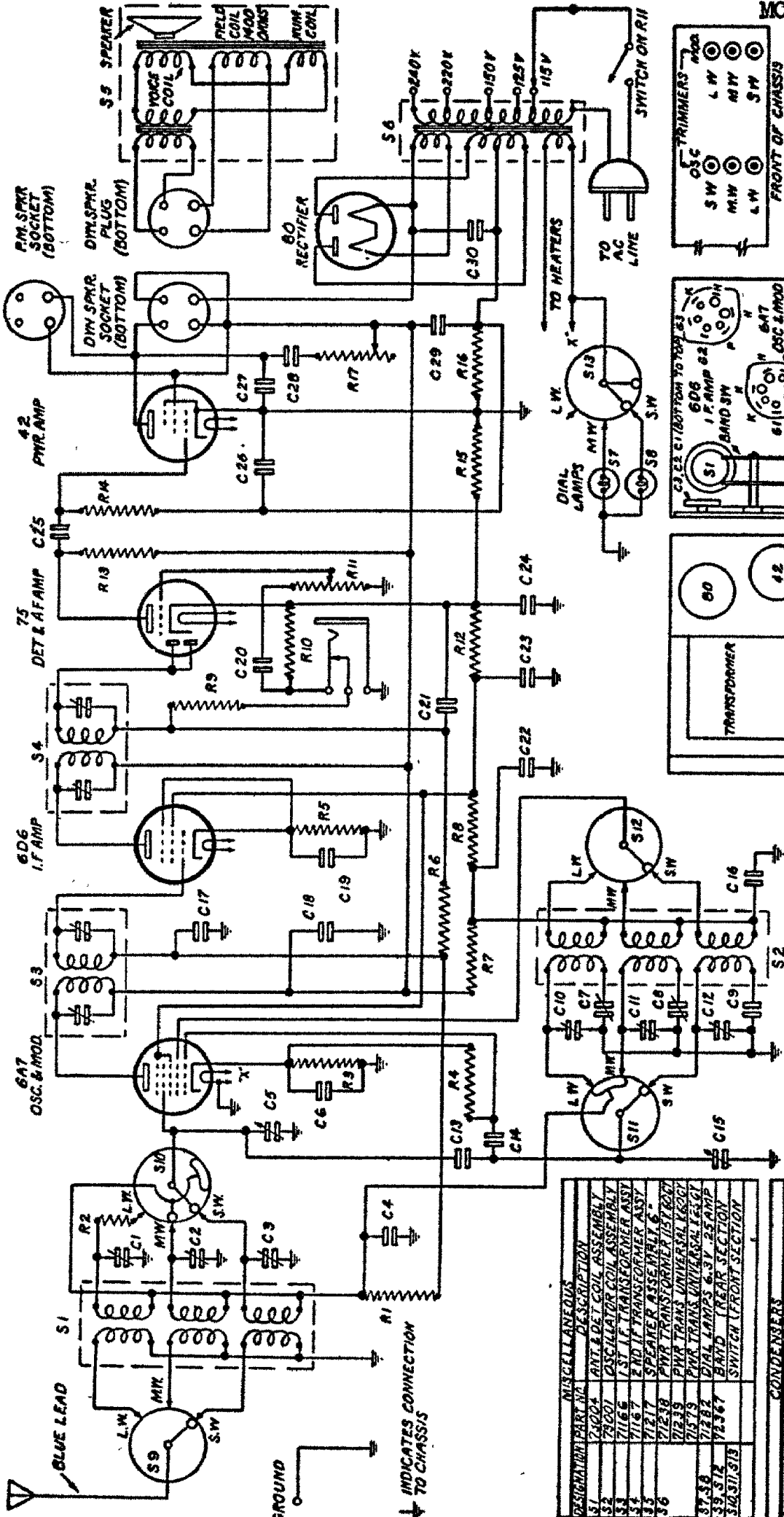


PILOT RADIO CORP.

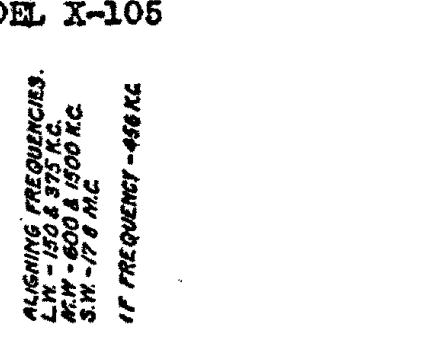
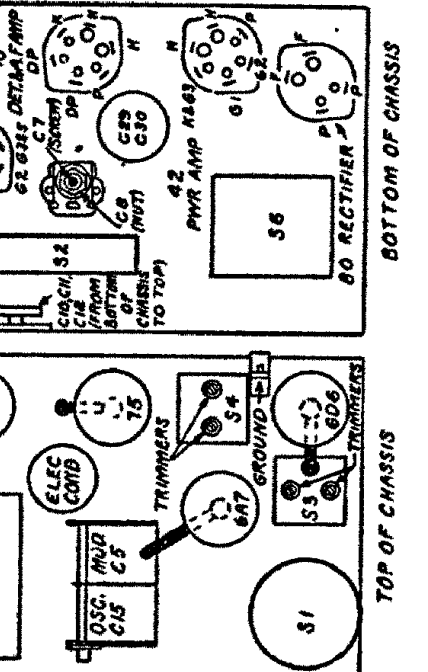
MODEL X-105



RESISTOR PART NO.	DESCRIPTION
R1	100,000 OHMS 1/2 WATT
R2	100,000 OHMS 1/2 WATT
R3	100,000 OHMS 1/2 WATT
R4	100,000 OHMS 1/2 WATT
R5	100,000 OHMS 1/2 WATT
R6	100,000 OHMS 1/2 WATT
R7	100,000 OHMS 1/2 WATT
R8	100,000 OHMS 1/2 WATT
R9	100,000 OHMS 1/2 WATT
R10	100,000 OHMS 1/2 WATT
R11	100,000 OHMS 1/2 WATT

CONDENSER PART NO.	DESCRIPTION
C1	100,000 OHMS 1/2 WATT
C2	100,000 OHMS 1/2 WATT
C3	100,000 OHMS 1/2 WATT
C4	100,000 OHMS 1/2 WATT
C5	100,000 OHMS 1/2 WATT
C6	100,000 OHMS 1/2 WATT
C7	100,000 OHMS 1/2 WATT
C8	100,000 OHMS 1/2 WATT
C9	100,000 OHMS 1/2 WATT
C10	100,000 OHMS 1/2 WATT
C11	100,000 OHMS 1/2 WATT
C12	100,000 OHMS 1/2 WATT
C13	100,000 OHMS 1/2 WATT
C14	100,000 OHMS 1/2 WATT
C15	100,000 OHMS 1/2 WATT
C16	100,000 OHMS 1/2 WATT
C17	100,000 OHMS 1/2 WATT
C18	100,000 OHMS 1/2 WATT
C19	100,000 OHMS 1/2 WATT
C20	100,000 OHMS 1/2 WATT
C21	100,000 OHMS 1/2 WATT
C22	100,000 OHMS 1/2 WATT
C23	100,000 OHMS 1/2 WATT
C24	100,000 OHMS 1/2 WATT
C25	100,000 OHMS 1/2 WATT
C26	100,000 OHMS 1/2 WATT
C27	100,000 OHMS 1/2 WATT
C28	100,000 OHMS 1/2 WATT
C29	100,000 OHMS 1/2 WATT
C30	100,000 OHMS 1/2 WATT

TRIMMER PART NO.	DESCRIPTION
T1	100,000 OHMS 1/2 WATT
T2	100,000 OHMS 1/2 WATT
T3	100,000 OHMS 1/2 WATT
T4	100,000 OHMS 1/2 WATT
T5	100,000 OHMS 1/2 WATT
T6	100,000 OHMS 1/2 WATT
T7	100,000 OHMS 1/2 WATT
T8	100,000 OHMS 1/2 WATT
T9	100,000 OHMS 1/2 WATT
T10	100,000 OHMS 1/2 WATT
T11	100,000 OHMS 1/2 WATT
T12	100,000 OHMS 1/2 WATT
T13	100,000 OHMS 1/2 WATT
T14	100,000 OHMS 1/2 WATT
T15	100,000 OHMS 1/2 WATT
T16	100,000 OHMS 1/2 WATT
T17	100,000 OHMS 1/2 WATT
T18	100,000 OHMS 1/2 WATT
T19	100,000 OHMS 1/2 WATT
T20	100,000 OHMS 1/2 WATT



ALIGNING FREQUENCIES.
L.W. - 150 & 375 KC.
M.W. - 600 & 1500 KC.
S.W. - 178 MC.
IF FREQUENCY - 456 KC.