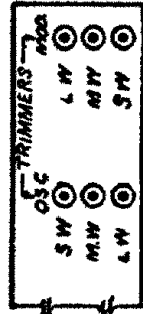
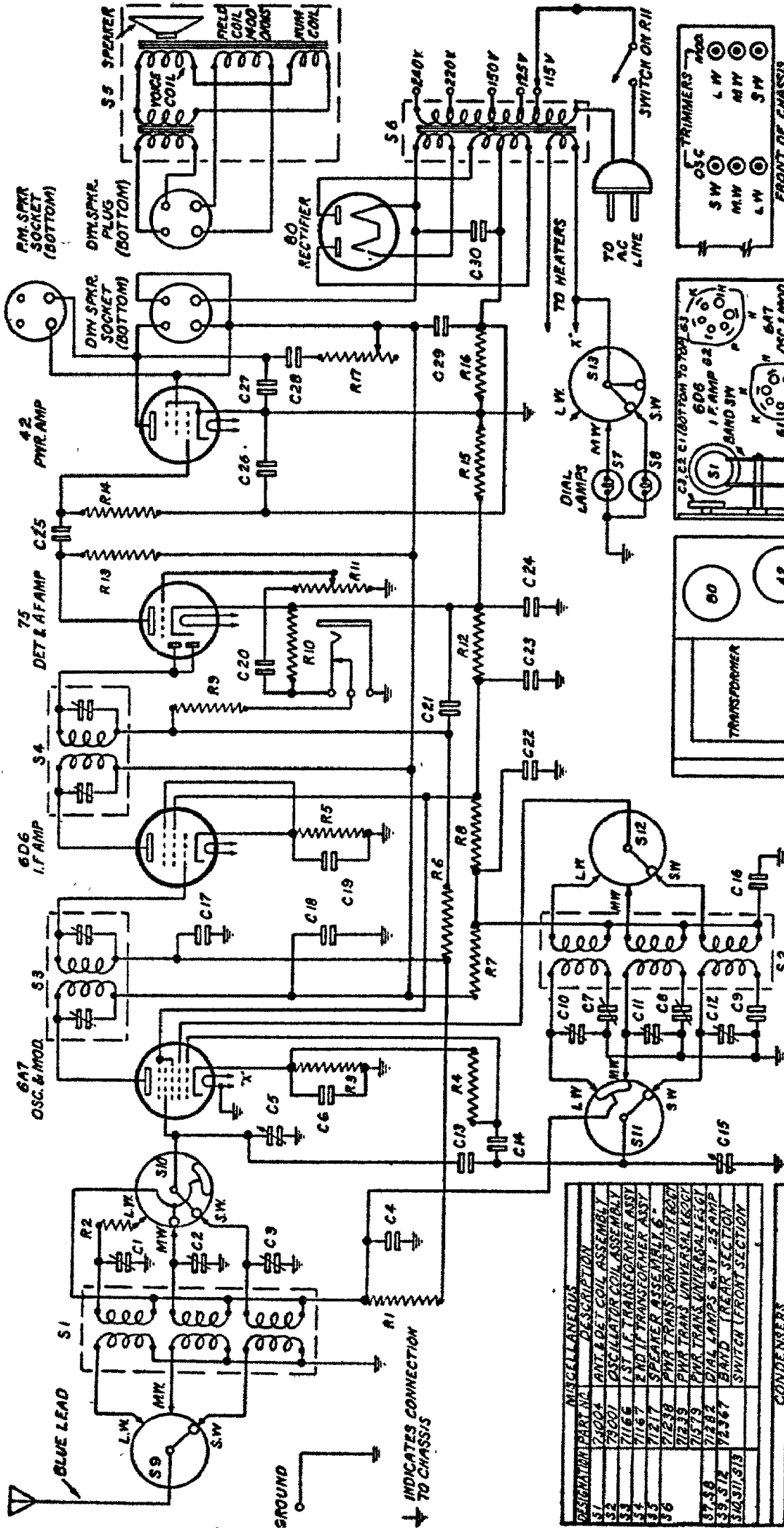
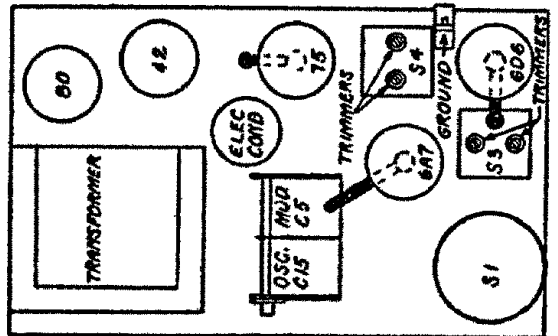
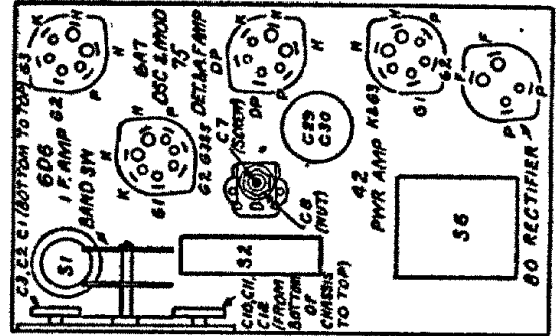


PILOT RADIO CORP.

MODEL X-105



ALIGNING FREQUENCIES.
LW - 150 & 375 K.C.
MW - 600 & 1500 K.C.
SW - 17.8 MC
IF FREQUENCY - 456 KC



| DESIGNATION | PART NO. | DESCRIPTION |
|-------------|----------|-----------------------|
| R1 | 13031 | 100,000 OHMS 1/4 WATT |
| R2 | 13030 | 50 OHMS 1/4 WATT |
| R3 | 13114 | 100 OHMS 1/4 WATT |
| R4 | 13115 | 50,000 OHMS 1/4 WATT |
| R5 | 13001 | 1 MEG OHM 1/4 WATT |
| R6 | 13073 | 3,000 OHMS 1/4 WATT |
| R7 | 13129 | 15,000 OHMS 1/4 WATT |
| R8 | 13147 | 300,000 OHMS 1/4 WATT |
| R9 | 13148 | 30,000 OHMS 1/4 WATT |
| R10 | 13171 | 250,000 OHMS 1/4 WATT |
| R11 | 13024 | 500,000 OHMS 1/4 WATT |
| R12 | 13130 | 420 OHMS 1/4 WATT |
| R13 | 13059 | 250 OHMS 1/4 WATT |
| R14 | 11615 | 100,000 OHMS 1/4 WATT |
| R15 | | CONTROL |

| DESIGNATION | PART NO. | DESCRIPTION |
|-------------|-----------|----------------------------|
| S1 | 71004 | ANT. & DET. COIL ASSEMBLY |
| S2 | 71001 | OSCILLATOR COIL ASSEMBLY |
| S3 | 71166 | 1ST I.F. TRANSFORMER ASSY |
| S4 | 71167 | 2ND I.F. TRANSFORMER ASSY |
| S5 | 71217 | SPEAKER ASSEMBLY 6" |
| S6 | 71238 | PWR TRANSFORMER 157-000 |
| S7 | 71239 | PWR TRANS. UNIVERSAL RECT. |
| S8 | 71282 | DIAL LAMPS 6.3V 25 AMP |
| S9 | 72367 | BAND SELECTOR SWITCH |
| S10 | 72371/713 | SWITCH FRONT SECTION |

| DESIGNATION | PART NO. | DESCRIPTION |
|--------------|----------|-------------------------|
| C1, C2, C3 | 72363 | TRIMMER 2 PANEL |
| C4, C11, C12 | 21055 | ASSEMBLY |
| C5, C13 | 72371 | 405 MFD 200V PAPER |
| C6, C19 | 21055 | 1 MFD 200V PAPER |
| C7 | 72355 | DUAL PAPER 150-150 MMPS |
| C8 | 21055 | 100,000 OHMS 1/4 WATT |
| C9 | 21055 | 50,000 OHMS 1/4 WATT |
| C10 | 21055 | 1 MEG OHM 1/4 WATT |
| C14 | 21055 | 3,000 OHMS 1/4 WATT |
| C15 | 21055 | 15,000 OHMS 1/4 WATT |
| C16 | 21055 | 300,000 OHMS 1/4 WATT |
| C17 | 21055 | 30,000 OHMS 1/4 WATT |
| C18 | 21055 | 250,000 OHMS 1/4 WATT |
| C20 | 21055 | 500,000 OHMS 1/4 WATT |
| C21 | 21055 | 420 OHMS 1/4 WATT |
| C22 | 21055 | 250 OHMS 1/4 WATT |
| C23 | 21055 | 100,000 OHMS 1/4 WATT |
| C24 | 21055 | CONTROL |