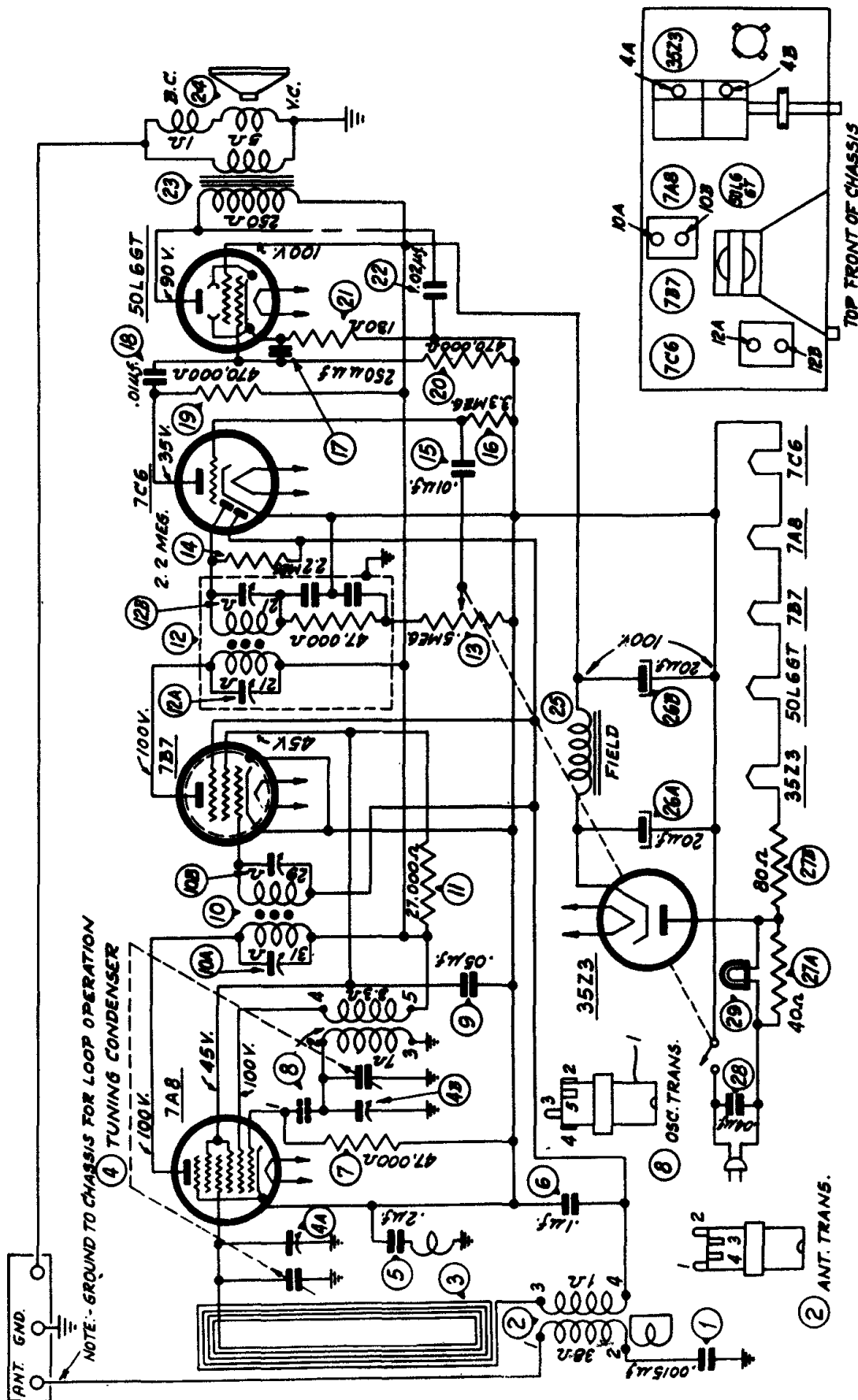


PHILCO Models PT-91, PT-92, PT-93, PT-94, PT-95



SCHEMATIC DIAGRAM — MODELS PT-91, PT-92, PT-93, PT-94, PT-95

The tube socket voltages indicated on the diagram were measured with a 1,000 ohms per voltmeter — PHILCO Model 027, line voltage 117 volts A.C.

| Operations in Order | SIGNAL GENERATOR | | | RECEIVER | | |
|---------------------|--------------------------------|--------------|--|------------------------------|-----------------|------------------------------|
| | Output Connections to Receiver | Dial Setting | | Dial Setting | Control Setting | Adjust Compensators in Order |
| 1. | Ant. Section of tuning | 455 K.C. | | 540 K.C. Tuning Cond. Closed | Vol. Max. | 12A, 12B, 10A, 10B |
| 2. | Loop see above instructions | 1500 K.C. | | 1500 K.C. | Vol. Max. | 4B |
| 3. | Loop see above instructions | 1500 K.C. | | 1500 K.C. | Vol. Max. | 4A |