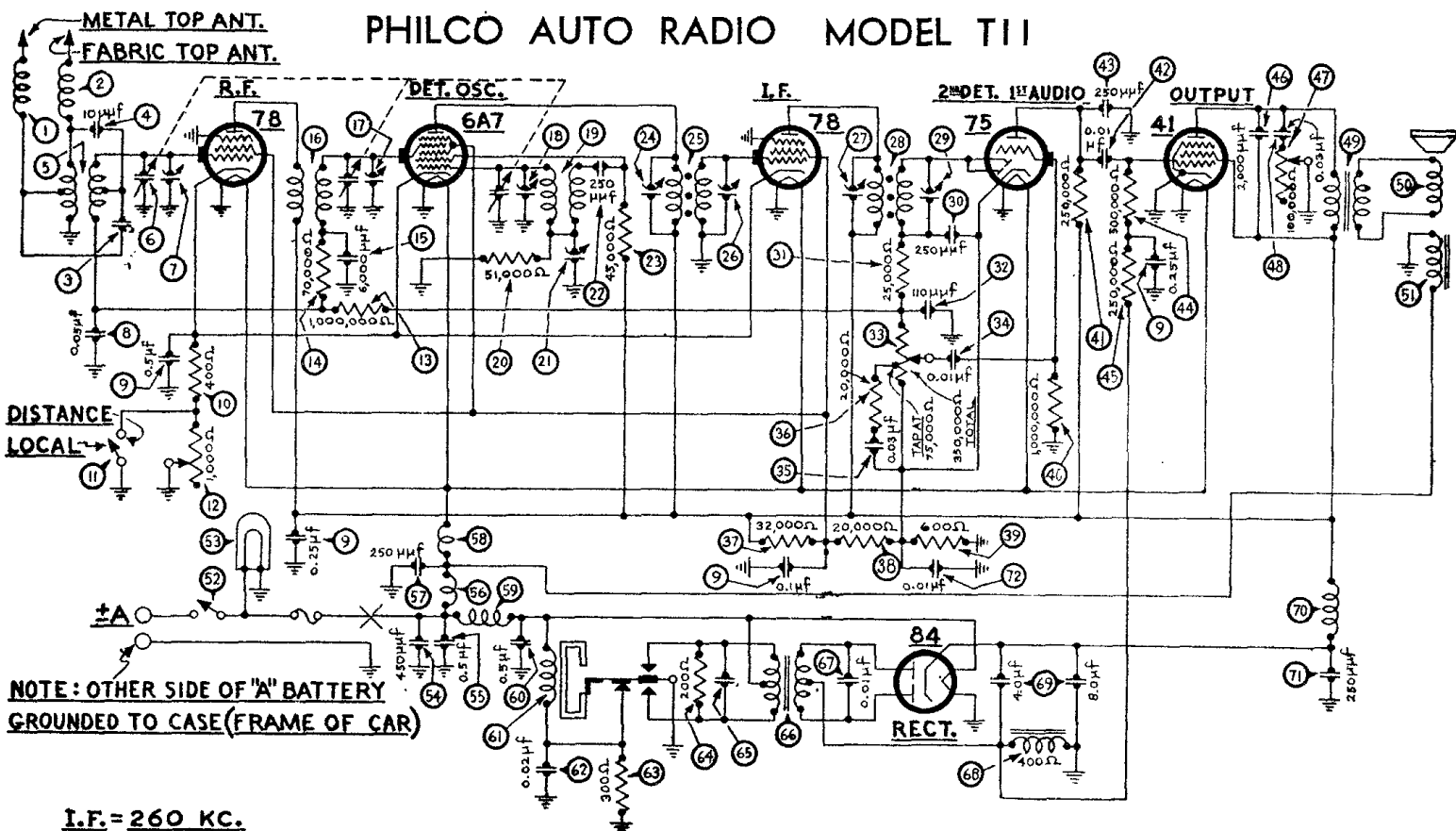


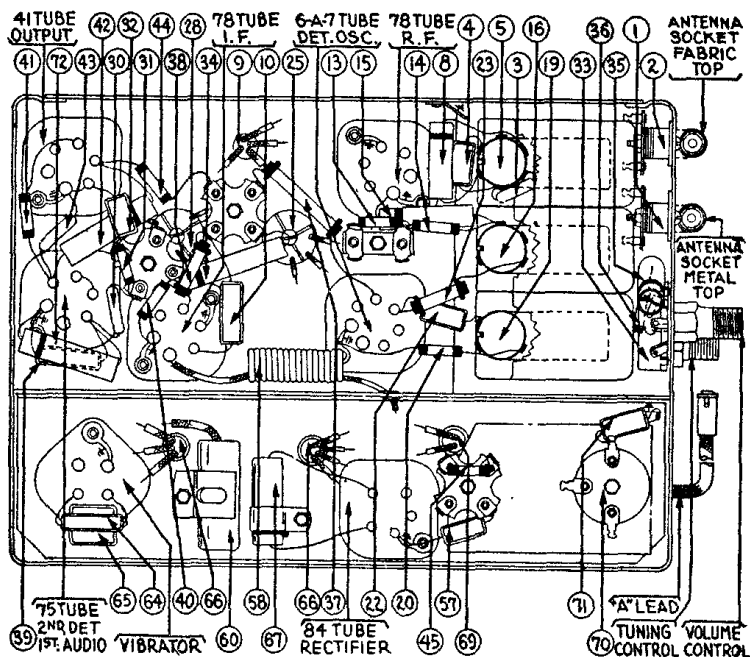
PHILCO AUTO RADIO MODEL T11



I.F. = 260 KC.

PARTS LIST

No.	Description	Part No.	No.	Description	Part No.
1	Antenna Choke	38-7210	47	Tone Control	
2	Antenna Choke	38-7210	48	Condenser (.03 mfd.)	
3	Condenser (70 mmfd.)	30-1068	49	Output Transformer	
4	Condenser (10 mmfd.)	30-1065	50	Cone & Voice Coil	
5	Antenna Transformer	32-1925	51	Field Coil Assembly	
6	Tuning Condenser	31-1674	52	On & Off Switch	
7	First Padder (on Tun. Cond.)		53	Pilot Lamp	
8	Condenser (.05 mfd.)	30-4444	54	Condenser (450 mmfd.)	
9	Condenser		55	Condenser (.5 mfd.)	
10	(.1-.25-.25-.5 mfd.)	30-4374	56	"A" Choke	
11	Resistor (400 ohms)	33-1211	57	Condenser (250 mmfd.)	
12	Sensitivity Control Switch	42-1140	58	Filament Choke	
13	Sensitivity Control	33-5129	59	Vibrator Choke	
14	Resistor (1,000,000 ohms)	33-510344	60	Condenser (.5 mfd.)	
15	Resistor (70,000 ohms)	33-370334	61	Vibrator	
16	Condenser (6,000 mmfd.)	30-4445	62	Condenser (.02 mfd.)	
17	R. F. Transformer	32-1926	63	Resistor (300 ohms)	
18	Second Padder (on Tun. Cond.)		64	Resistor (200 ohms)	
19	Third Padder (on Tun. Cond.)		65	Condenser (.05 mfd.)	
20	Oscillator Transformer	32-1927	66	Power Transformer	
21	Resistor (51,000 ohms)	33-351344	67	Condenser (.01 mfd.)	
22	Low Frequency Padder	31-6056	68	Filter Choke	
23	Condenser (250 mmfd.)	30-1032	69	Filter Condenser (4-8 mfd.)	
24	Resistor (45,000 ohms)	33-345344	70	R. F. Choke	
25	Padder (Pri. 1st I. F. Trans.)		71	Condenser (250 mmfd.)	
26	First I. F. Transformer	32-1260	72	Condenser (.01 mfd.)	
27	Padder (Sec. 1st I. F. Trans.)				
28	Padder (Pri. 2nd I. F. Trans.)				
29	Second I. F. Transformer	32-2164			
30	Padder (Sec 2nd I. F. Trans.)				
31	Condenser (250 mmfd.)	30-1032			
32	Resistor (25,000 ohms)	33-325344			
33	Condenser (110 mmfd.)	30-1031			
34	Volume Control				
35	(350,000 ohms)	33-5121			
36	Condenser (.01 mfd.)	30-4124			
37	Condenser (.03 mfd.)	30-4449			
38	Resistor (20,000 ohms)	33-320334			
39	Resistor (32,000 ohms)	33-332434			
40	Resistor (20,000 ohms)	33-320334			
41	Resistor (600 ohms)	33-1212			
42	Resistor (1,000,000 ohms)	33-510344			
43	Resistor (250,000 ohms)	33-424344			
44	Condenser (.01 mfd.)	30-4145			
45	Condenser (250 mmfd.)	30-1032			
46	Resistor (500,000 ohms)	33-449344			
47	Resistor (250,000 ohms)	33-424344			
48	Condenser (2,000 mmfd.)	30-4177			



CHANGES — "Run Numbers" are stamped on the chassis sub-base for identification. These "Run Numbers" are changed consecutively as major changes are made in the Receiver wiring and parts.

RUN No. 3 — A 250 mmfd. condenser has been added to the Receiver. One side is connected between resistors 57 and 58 and the other side to ground.

RUN No. 4 — The 250 mmfd. condenser added in Run No. 3 has been removed.

RUN No. 5 — The Antenna Transformer 5 is replaced with a new type having the same part number. It can be identified by the red and blue paint marks on the fibre.

RUN No. 6 — Condenser 11 has been removed from the cathode side of the "B" choke 10 and connected to the plate side of choke 10.

RUN No. 6A — A 250 mmfd. condenser has been added to the Receiver. One side is connected between resistors 44 and 45 and the other side to ground.

RUN No. 8 — Condenser 65 removed (1250 mmfd.). Part No. 30-4020 added. (.05 mfd.)

RUN No. 13 — The 250 mmfd. condenser that was added in Run No. 6A has been removed.

RUN No. 14 — Resistor 10 removed (400 ohms). Part No. 33-1225 added. (350 ohms.)

No major changes were involved in Run Nos. 2, 7, 9, 10, 11, 12.