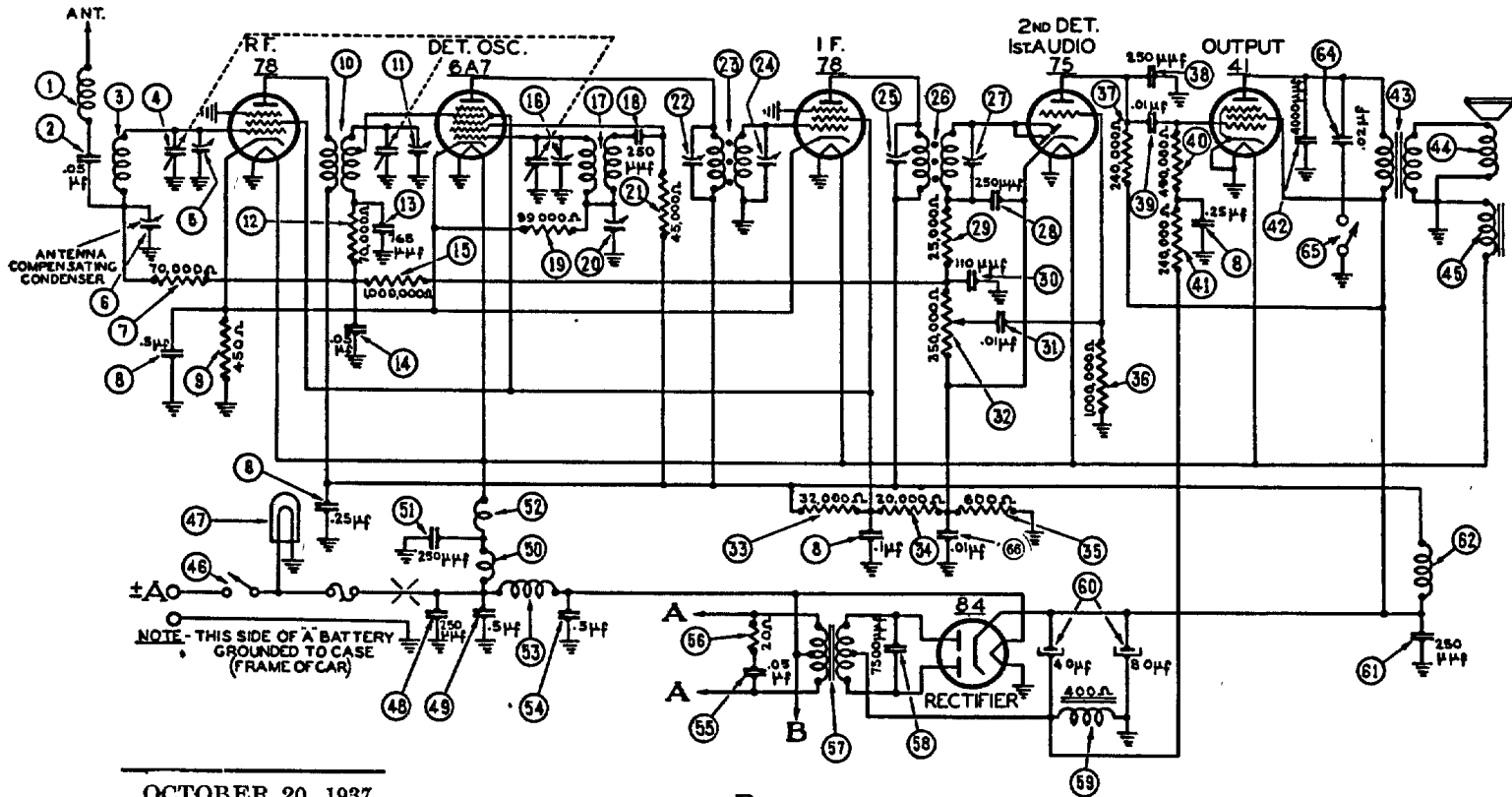


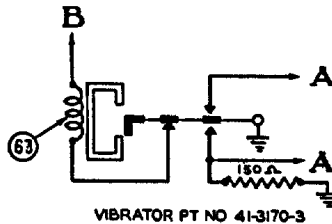
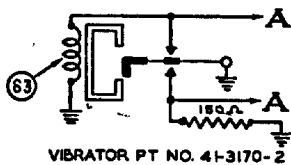
PHILCO RADIO & TELEV. CORP.

NASH - PHILCO MODEL — N-1514 SINGLE UNIT RECEIVER



OCTOBER 20, 1937

FOR ALIGNMENT,
SEE INDEX



I.F. = 260 KC

FIGURE 1

MODEL N-1514 PARTS LIST

No.	Description	Part No.	No.	Description	Part No.
1	Antenna Choke	32-1956	55	Field Coil	32-9236
2	Condenser (.05 mfd.)	30-4444	56	On & Off Switch	42-5617
3	Antenna Transformer	32-2516	57	Pilot Lamp	34-2040
4	Tuning Condenser	31-1930	58	Condenser (.250 mmfd.)	30-1032
5	First Padder (on Tun. Cond.)	31-6082	59	Condenser (.5 mfd.)	30-4015
6	Antenna Compensator	31-6082	60	"A" Choke	32-1604
7	Resistor (70,000 ohms)	33-370344	61	Condenser (.250 mmfd.)	30-1032
8	Condenser (.01-.1-.25-.5 mfd.)	30-4511	62	Filament Choke	32-2039
9	Resistor (450 ohms)	33-1218	63	Vibrator Choke	32-2535
10	I. F. Transformer	32-2307	64	Condenser (.5 mfd.)	30-4015
11	Second Padder (on Tun. Cond.)	31-6102	65	Condenser (.95 mfd.)	30-4444
12	Resistor (70,000 ohms)	33-370344	66	Resistor (20 ohms)	33-020344
13	Condenser (.765 mmfd.)	30-1069	67	Power Transformer	32-7550
14	Condenser (.05 mfd.)	33-3615-05G	68	Condenser (7,500 mmfd.)	30-4420
15	Resistor (1,000,000 ohms)	33-510344	69	Filter Choke	32-7545
16	Third Padder (on Tun. Cond.)	31-6102	70	Filter Condenser (4-8 mfd.)	30-2150
17	Oscillator Transformer	32-2308	71	Condenser (.250 mfd.)	30-1032
18	Condenser (.250 mmfd.)	30-1032	72	"B" Choke	32-1281
19	Resistor (99,000 ohms)	33-399344	73	Vibrator (OPTIONAL)	41-3170-2
20	Low Frequency Padder	31-6102	74	Condenser (.02 mfd.)	30-4419
21	Resistor (45,000 ohms)	33-345344	75	Tone Control Switch	42-1145-2
22	Padder (Pri. 1st I. F. Trans.)	31-6102	76	Condenser (.01 mfd.)	3903-05G
23	First I. F. Transformer	32-2026	77	Receiver Housing	38-9230
24	Padder (Sec. 1st I. F. Trans.)	31-6102	78	Four Prong Socket	27-6044
25	Padder (Pri. 2nd I. F. Trans.)	31-6102	79	Five Prong Socket	27-6035
26	Second I. F. Transformer	32-2027	80	Six Prong Socket	27-6036
27	Padder (Sec. 2nd I. F. Trans.)	31-6102	81	Seven Prong Socket	27-6037
28	Condenser (.250 mmfd.)	30-1032	82	Tuning Control Shaft	28-8815
29	Resistor (25,000 ohms)	33-325344	83	Volume Control Shaft	28-8816
30	Condenser (.110 mmfd.)	30-1031	84	Tone Control Shaft	28-8817
31	Condenser (.01 mfd.)	3903-05G	85	Tuning & Volume Knob	27-4690
32	Volume Control	33-5139	86	Knob	27-4639
33	Resistor (32,000 ohms)	33-332434	87	Knob Base	28-4184
34	Resistor (20,000 ohms)	33-320344	88	Gland Nut	28-6558
35	Resistor (600 ohms)	33-1212	89	Scale Assembly	42-5792
36	Resistor (1,000,000 ohms)	33-510344	90	Fuse	7227
37	Resistor (240,000 ohms)	33-424344	91	Fuse Insulator	27-7729
38	Condenser (.250 mmfd.)	30-1032	92	Tee Bolt (Rec. Mtg.)	28-6181
39	Condenser (.01 mfd.)	3903-05G	93	Side	28-6268
40	Resistor (32,000 ohms)	33-449344	94	Bottom	28-6268
41	Resistor (240,000 ohms)	33-424344	95	Nut (Rec. Mtg.)	W518
42	Condenser (4,000 mmfd.)	30-4185	96	Distributor Resistor	33-1196
43	Output Transformer	32-7495	97	Interference Condenser	30-4007
44	Cone & Voice Coil	36-3586	98	Interference Condenser	30-4307
45			99	Interference Condenser	30-4663

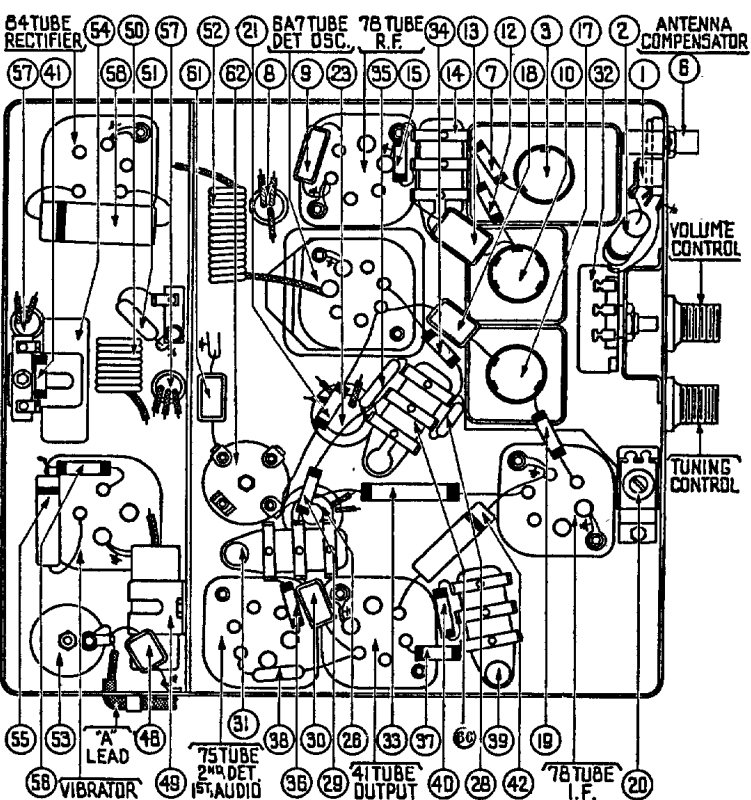


FIGURE 2