

# PHILCO RADIO & TELEV. CORP.

## GRAHAM - PHILCO MODEL — G-1528 TWO UNIT RECEIVER

IF.=260KC

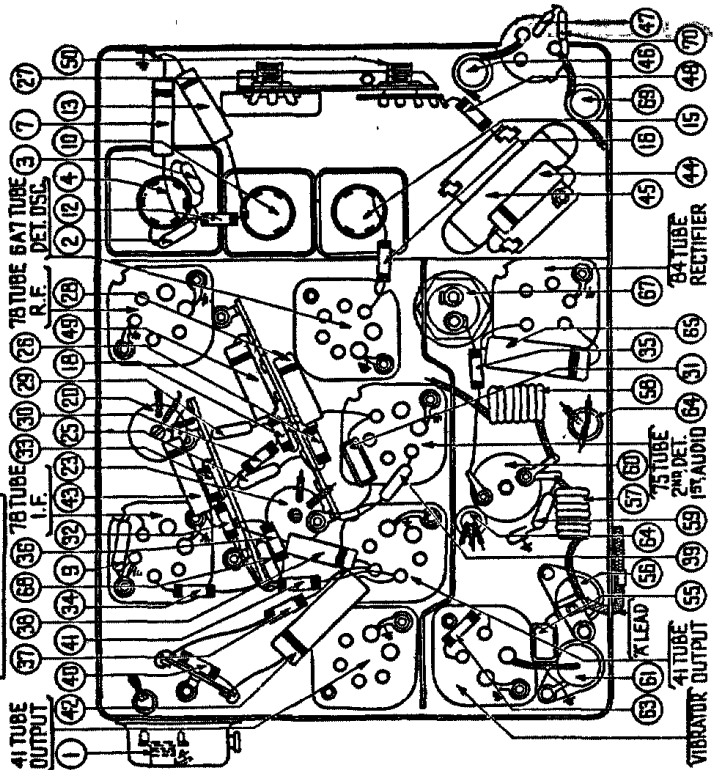
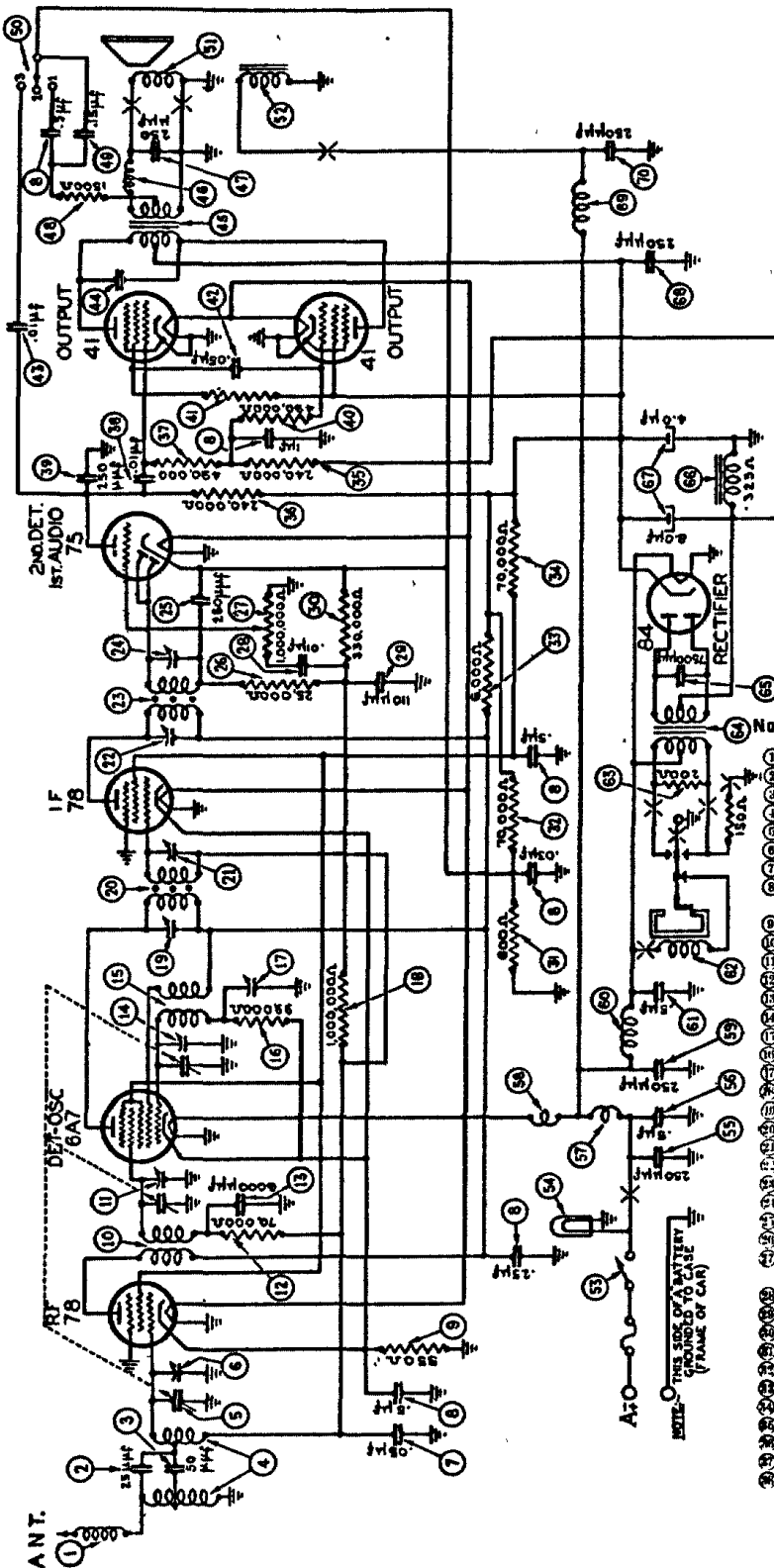


FIGURE 2

### MODEL G-1528 PARTS LIST

| No. | Description                          | Part No.  | No. | Description                 | Part No.  |
|-----|--------------------------------------|-----------|-----|-----------------------------|-----------|
| 1   | Antenna Choke                        | 32-2063   | 49  | Condenser (250 mmfd.)       | 30-1032   |
| 2   | Condenser (25 mfd.)                  | 30-1067   | 50  | Resistor (490,000 ohms)     | 33-449344 |
| 3   | Condenser (50 mmfd.)                 | 30-1029   | 51  | Resistor (3,500 ohms)       | 33-235344 |
| 4   | Antenna Transformer                  | 32-2936   | 52  | Condenser (.05 mfd.)        | 30-4454   |
| 5   | Tuning Condenser                     | 31-2161   | 53  | Condenser (.01 mfd.)        | 30-4501   |
| 6   | First Padder (on Tun. Cond.)         |           | 54  | Condenser (4000 mmfd.)      | 30-4185   |
| 7   | Condenser (.05 mfd.)                 | 30-4444   | 55  | Output Transformer          | 32-7928   |
| 8   | Condenser (.03-.1-.25-.5-.5-.5 mfd.) | 30-4554   | 56  | Choke                       | 32-1374   |
| 9   | Resistor (550 ohms)                  | 33-155331 | 57  | Condenser (250 mmfd.)       | 30-1032   |
| 10  | R. F. Transformer                    | 32-2830   | 58  | Resistor (1,500 ohms)       | 33-215344 |
| 11  | Second Padder (on Tun. Cond.)        |           | 59  | Condenser (.15 mfd.)        | 30-4191   |
| 12  | Resistor (70,000 ohms)               | 33-370344 | 60  | Tone Control Switch         | 42-1389   |
| 13  | Condenser (6,000 mmfd.)              | 30-4467   | 61  | Cone and Voice Coil         | 45-2608   |
| 14  | Third Padder (on Tun. Cond.)         |           | 62  | Field Coil                  | 32-9263   |
| 15  | Oscillator Transformer               | 32-2828   | 63  | On and Off Switch           | 42-5617-3 |
| 16  | Resistor (99,000 ohms)               | 33-399344 | 64  | Pilot Lamp                  | 34-2039   |
| 17  | Low Frequency Padder                 | 31-6230   | 65  | Condenser (250 mmfd.)       | 30-1032   |
| 18  | Resistor (1,000,000 ohms)            | 33-510344 | 66  | Condenser (.5 mfd.)         | 30-4474   |
| 19  | Padder (Pri 1st I. F. Trans.)        |           | 67  | "A" Choke                   | 32-1374   |
| 20  | First I. F. Transformer              | 32-2791   | 68  | Filament Choke              | 32-2720   |
| 21  | Padder (Sec. 1st I. F. Trans.)       |           | 69  | Condenser (250 mmfd.)       | 30-1032   |
| 22  | Padder (Pri 2nd I. F. Trans.)        |           | 70  | Vibrator Choke              | 32-2812   |
| 23  | Second I. F. Transformer             | 32-2793   | 71  | Condenser (.5 mfd.)         | 30-4474   |
| 24  | Padder (Sec 2nd I. F. Trans.)        |           | 72  | Vibrator                    | 41-3170-3 |
| 25  | Condenser (250 mmfd.)                | 30-1032   | 73  | Resistor (200 ohms)         | 33-120344 |
| 26  | Resistor (25,000 ohms)               | 33-325344 | 74  | Power Transformer           | 32-7911   |
| 27  | Volume Control                       |           | 75  | Condenser (7,500 mmfd.)     | 30-4420   |
| 28  | (1,000,000 ohms)                     | 33-5245   | 76  | Filter Choke                | 32-7910   |
| 29  | Condenser (.01 mfd.)                 | 30-4479   | 77  | Filter Condenser (4-8 mfd.) | 30-2258   |
| 30  | Condenser (110 mmfd.)                | 30-1031   | 78  | Condenser (250 mmfd.)       | 30-1032   |
| 31  | Resistor (330,000 ohms)              | 33-433344 | 79  | Choke                       | 32-2657   |
| 32  | Resistor (600 ohms)                  | 33-160331 | 80  | Condenser (250 mmfd.)       | 30-1032   |
| 33  | Resistor (70,000 ohms)               | 33-370444 | 81  | Receiver Housing            | 38-2179   |
| 34  | Resistor (6,000 ohms)                | 33-260344 | 82  | Four Prong Socket           | 27-6044   |
| 35  | Resistor (70,000 ohms)               | 33-370344 | 83  | Five Prong Socket           | 27-6035   |
| 36  | Resistor (240,000 ohms)              | 33-424344 | 84  | Six Prong Socket            | 27-6036   |
| 37  | Resistor (240,000 ohms)              | 33-424344 | 85  | Seven Prong Socket          | 27-6037   |
| 38  | Resistor (490,000 ohms)              | 33-449344 | 86  | Inductive Suppressor        | 32-2250   |
| 39  | Condenser (.01 mfd.)                 | 30-4514   | 87  | Interference Condenser      | 30-4007   |
| 40  |                                      |           | 88  | Fuse                        | 7227      |

| No. | Description          | Part No. | No. | Description          | Part No. |
|-----|----------------------|----------|-----|----------------------|----------|
| 41  | Fuse Insulator       | 27-7729  | 89  | Speaker Cable        | 36-4034  |
| 42  | Tuning Control Shaft | 28-8813  | 90  | Speaker Mtg. Plate   | 38-9463  |
| 43  | Volume Control Shaft | 28-8864  | 91  | Tuning & Volume Knob | 27-4705  |
| 44  | Tone Control Shaft   | 28-8798  | 92  | Tone Knob            | 28-7212  |
| 45  | Scale Assembly       | 42-5829  | 93  | Knob Base            | 28-4184  |

DECEMBER 1937