

MODELS G-1708S, G-1806S, G-1807S, G-1808S, G-1809S, G-1811S, G-1813S, and SA-2000

PHILCO

NOTES

1. Used only in Models G-1807S, G-1809S, G-1811S and G-1813S.
2. 5U4GB used in Models G-1807S, G-1809S, G-1811S and G-1813S.
5Y3 used in Models G-1708S, G-1806S, G-1808S and SA-2000.

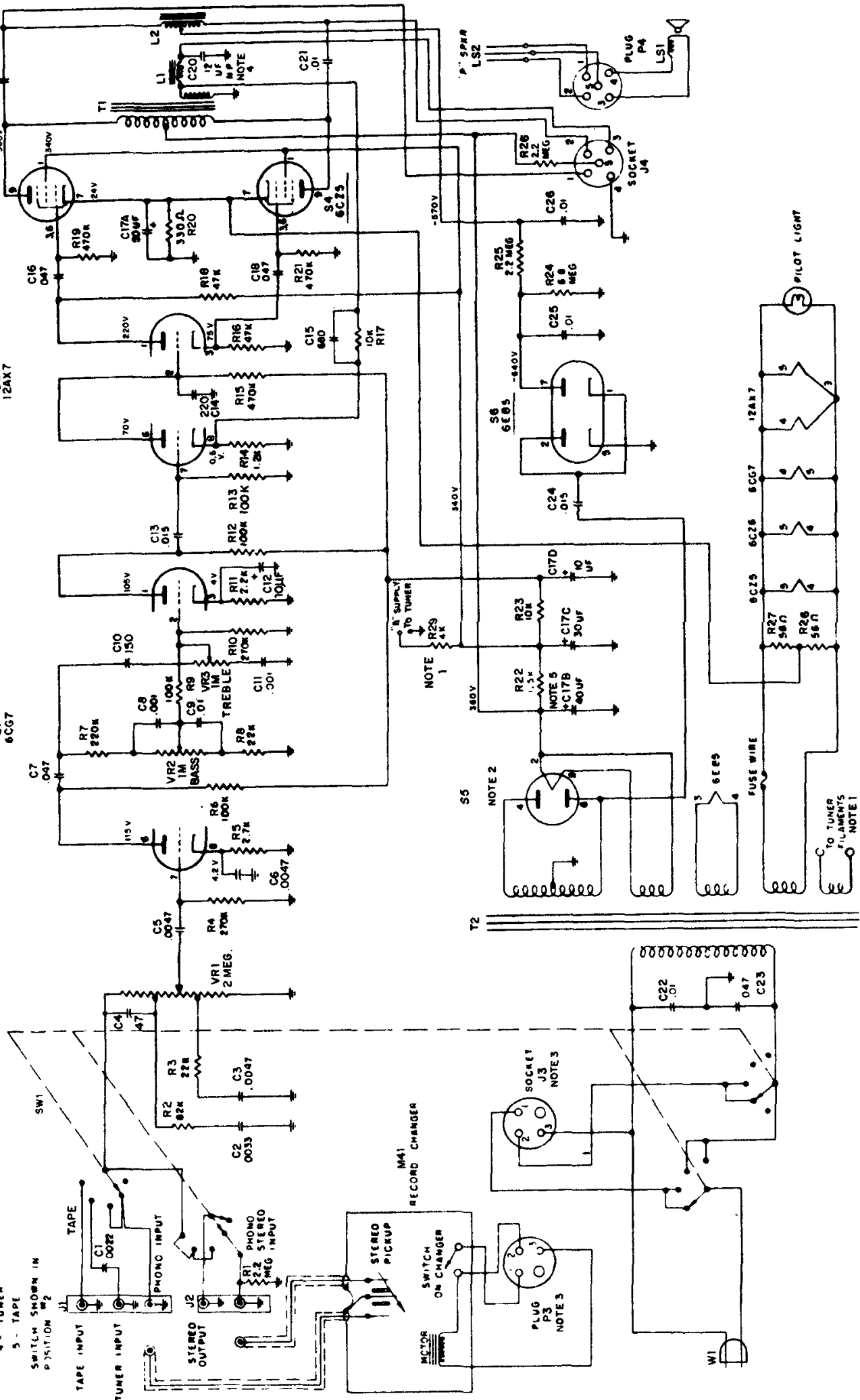
3. Not used in SA-2000.
4. C20 located on speaker.

5. In Models G-1708S, G-1806S, G-1808S and SA-2000, R22 is 4700 ohms. Other models, as shown on schematic.

SWITCH POSITIONS (C.W. ROTATION)

- 1 - OFF
- 2 - PHONO STEREO
- 3 - PHONO MONAURAL
- 4 - TUNER
- 5 - TAPE

SW1 SHOWN IN POSITION #2



PHILCO HI-FIDELITY PHONOGRAPH MODELS—

G-1708S, G-1806S, G-1807S, G-1808S, G-1809S, G-1811S, G-1813S and SA-2000