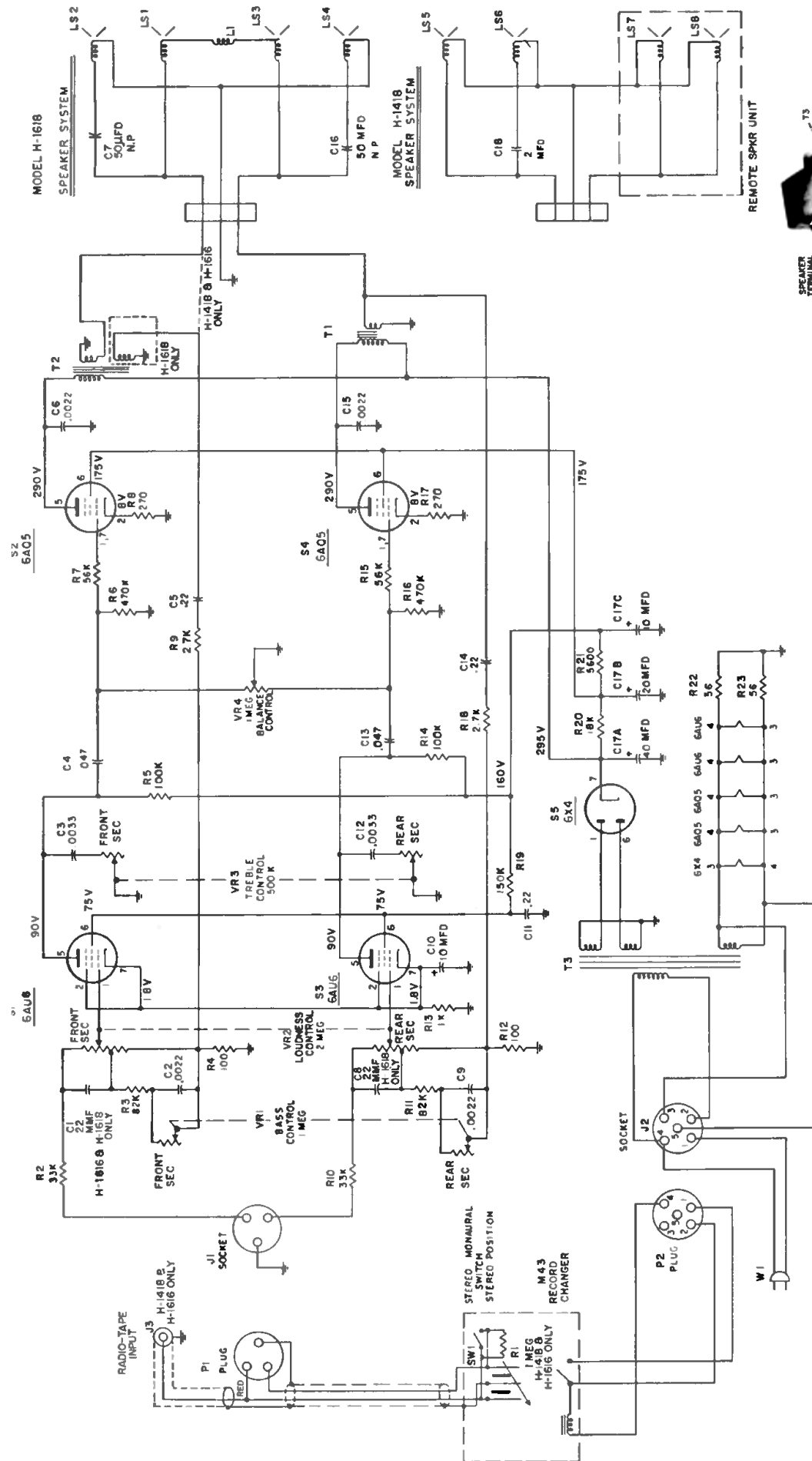


PHILCO Models H-1418, H-1616, and H-1618, exact material.

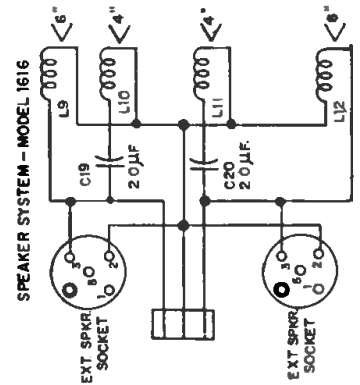
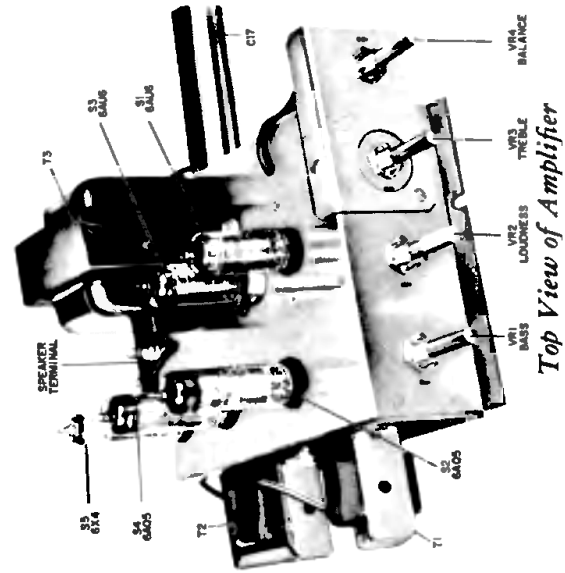
Models G-1412 and G-1608 are practically identical to the models covered on this page, except for changer, cabinet, and minor differences in circuitry.



PHILCO PHONOGRAPH MODELS H-1418, H-1616 AND H-1618

CIRCUIT—A dual channel stereo amplifier. Each channel contains two tubes. One rectifier tube supplies voltages for both channels. Loudness, bass, treble and balance controls are included in the amplifier.

OPERATING VOLTAGE—105-120 volts, 60 cycles, AC.
POWER CONSUMPTION—75 watts.



Top View of Amplifier