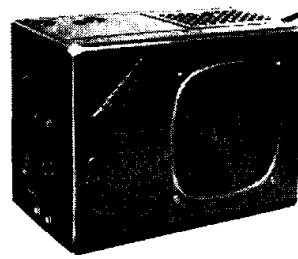


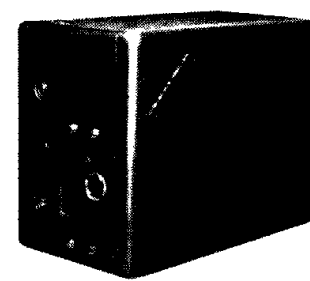
# PHILCO AUTO RADIO

## MODELS CR-4 AND CR-6

Philco Auto Radio Models CR-4 and CR-6 are six-tube superheterodynes of the universal-mounting type. Both models are the same, with this exception: in the CR-4, the speaker is self-contained; in the CR-6, the speaker is separately mounted. The control head is separately mounted. Custom-style control heads are available



MODEL CR-4

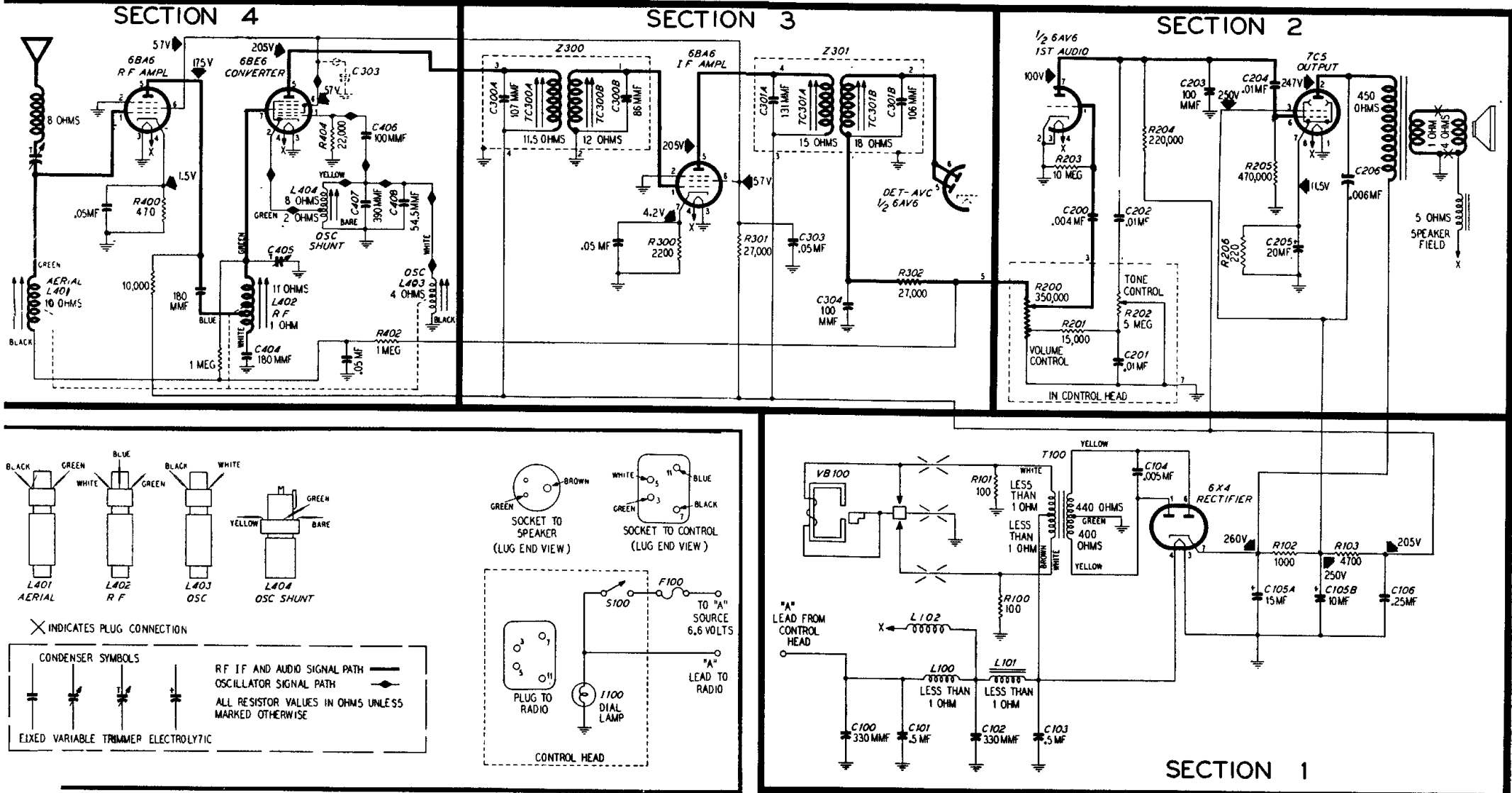


MODEL CR-6

### SPECIFICATIONS

CIRCUIT ..... Six-tube superheterodyne  
 FREQUENCY RANGE ..... 535—1600 kc.  
 INTERMEDIATE FREQUENCY ..... 455 kc.  
 AUDIO OUTPUT ..... 3 watts (approx.)  
 POWER INPUT ..... 7 amperes at 6.6 volts, d.c.  
 AERIAL ..... Any Philco auto-radio aerial  
 PHILCO TUBES (6)  
 6BA6 (2), 6BE6, 6AV6, 7C5, 6X4

Philco Corporation



Philco Auto Radio Models CR-4 and CR-6, Schematic Diagram (Revised)