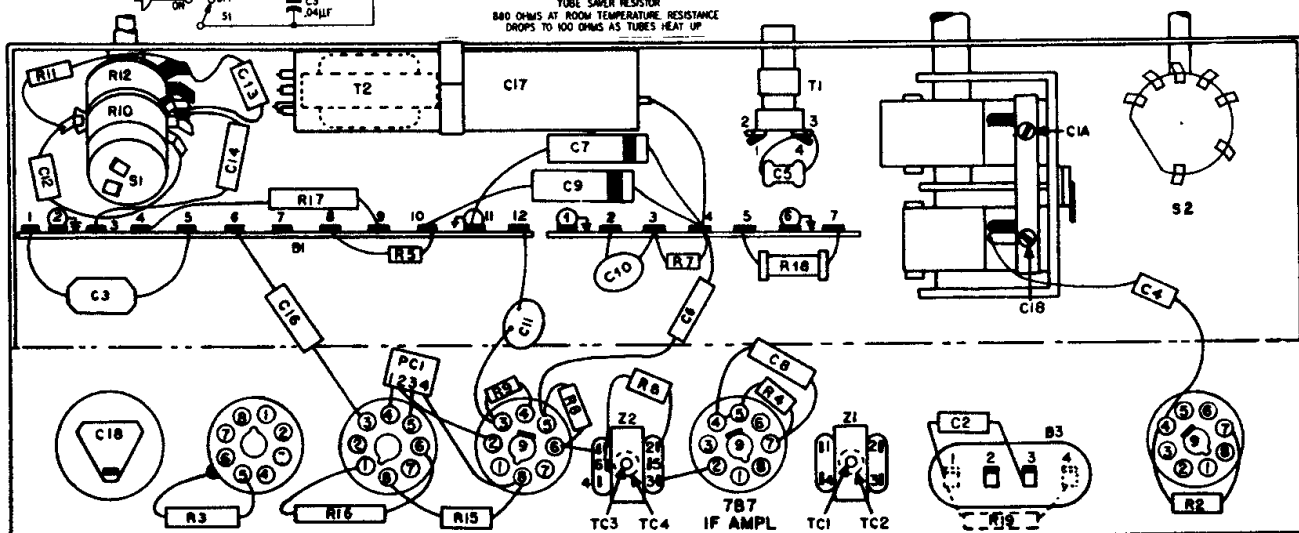
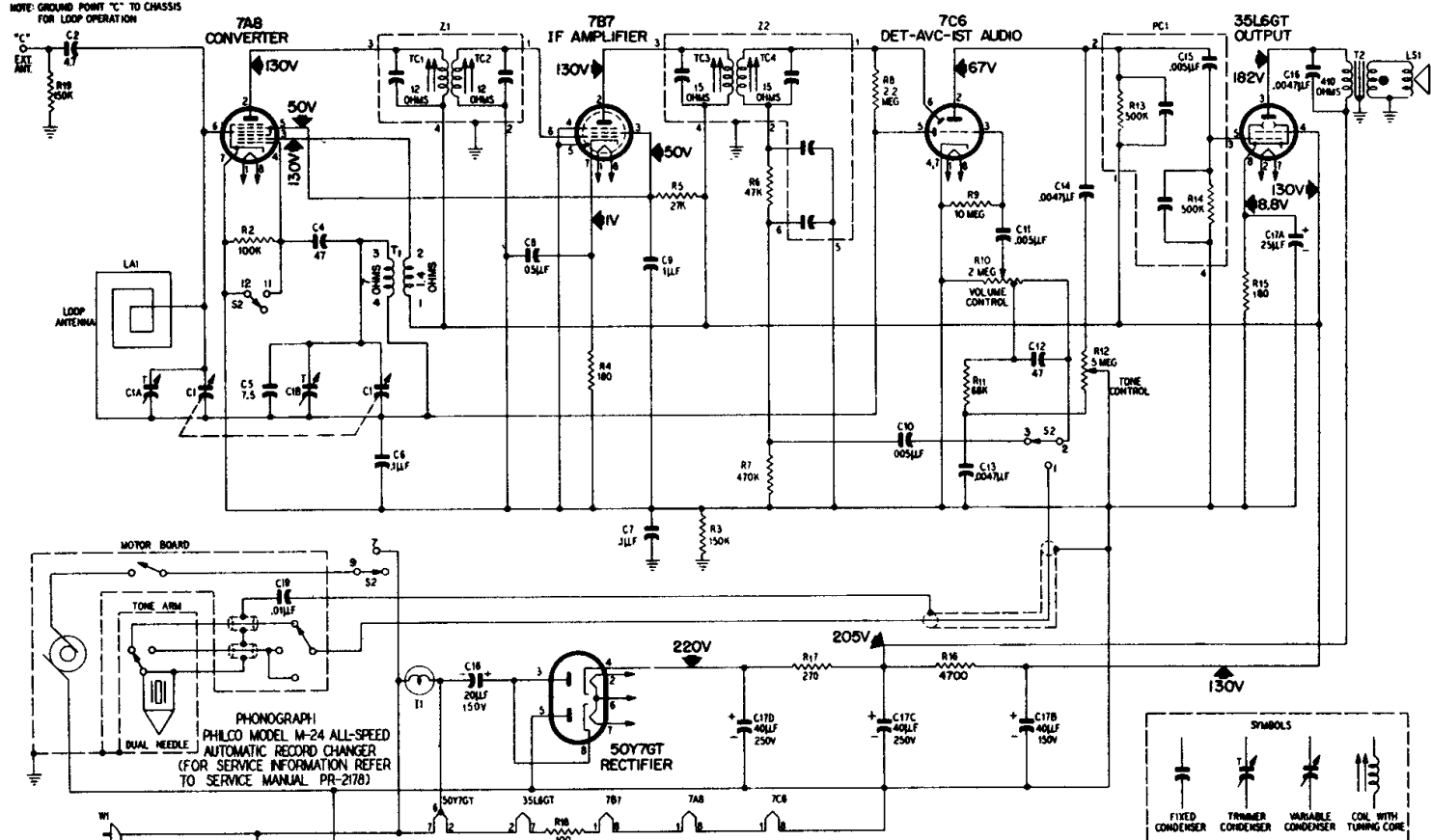
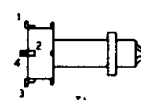
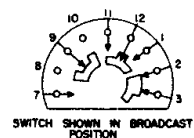


PHILCO RADIO-PHONOGRAPH MODEL C1348

NOTE: GROUND POINT "C" TO CHASSIS FOR LOOP OPERATION



ALL RESISTOR VALUES IN OHMS UNLESS OTHERWISE SPECIFIED.
ALL CAPACITOR VALUES IN μ F UNLESS OTHERWISE SPECIFIED.
● LESS THAN 1 OHM.
ALL VOLTAGES MEASURED BETWEEN POINT INDICATED AND B.



ALIGNMENT CHART

STEP	SIGNAL GENERATOR		RADIO		ADJUST TRIMMER
	CONNECTION TO RADIO	DIAL SETTING	DIAL SETTING	SPECIAL INSTRUCTIONS	
1	Output lead through a .01- μ f. condenser to grid (pin 6) of 7A8 converter tube.	455 kc. (modulated)	Gang fully open	Adjust, in order given in next column, for maximum output. TC2 and TC4 are located at top of transformers.	TC4—2nd i-f sec. TC3—2nd i-f pri. TC2—1st i-f sec. TC1—1st i-f pri.
2	Radiating loop. (See NOTE 1 below.).	1620 kc.	1620 kc. (See NOTE 2 below.)	Adjust for maximum output.	C1B—oscillator trimmer
3	Same as step 2.	1520 kc.	1520 kc. (See NOTE 2 below.)	Adjust for maximum output.	C1A—antenna trimmer

NOTE 1: Make up a 6—8 turn, 6-inch-diameter loop from insulated wire; connect to signal-generator leads, and place near radio loop.
NOTE 2: The tuning gang can be set to 1620 kc. and 1520 kc. by turning the tuning control until the pointer coincides with the respective marks on the dial backplate.