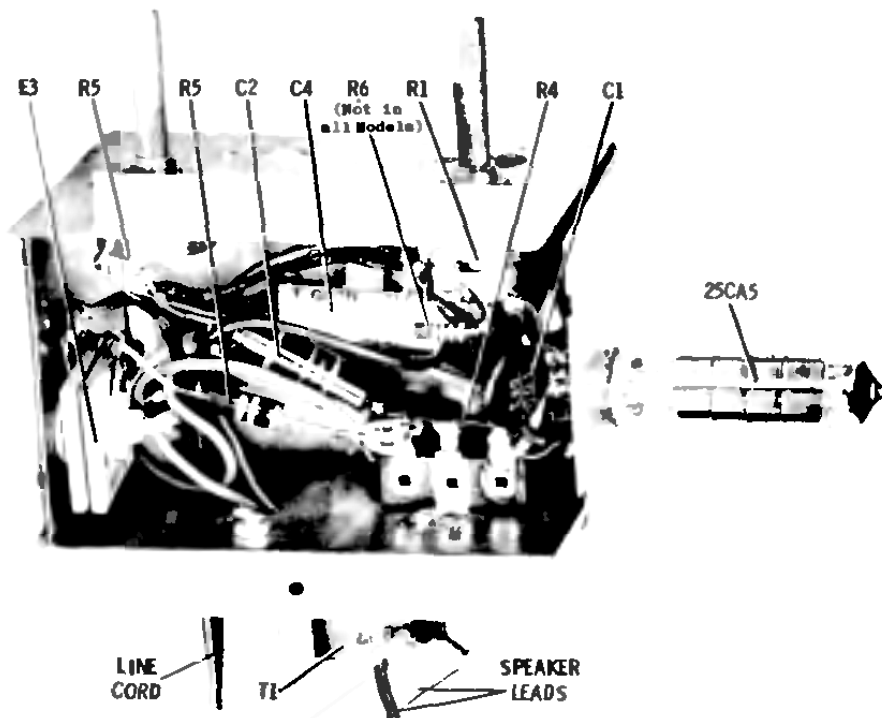


**MOTOROLA**

**CHASSIS**  
**HS-598**

**MODELS**  
**2F21B**  
**2F21R**

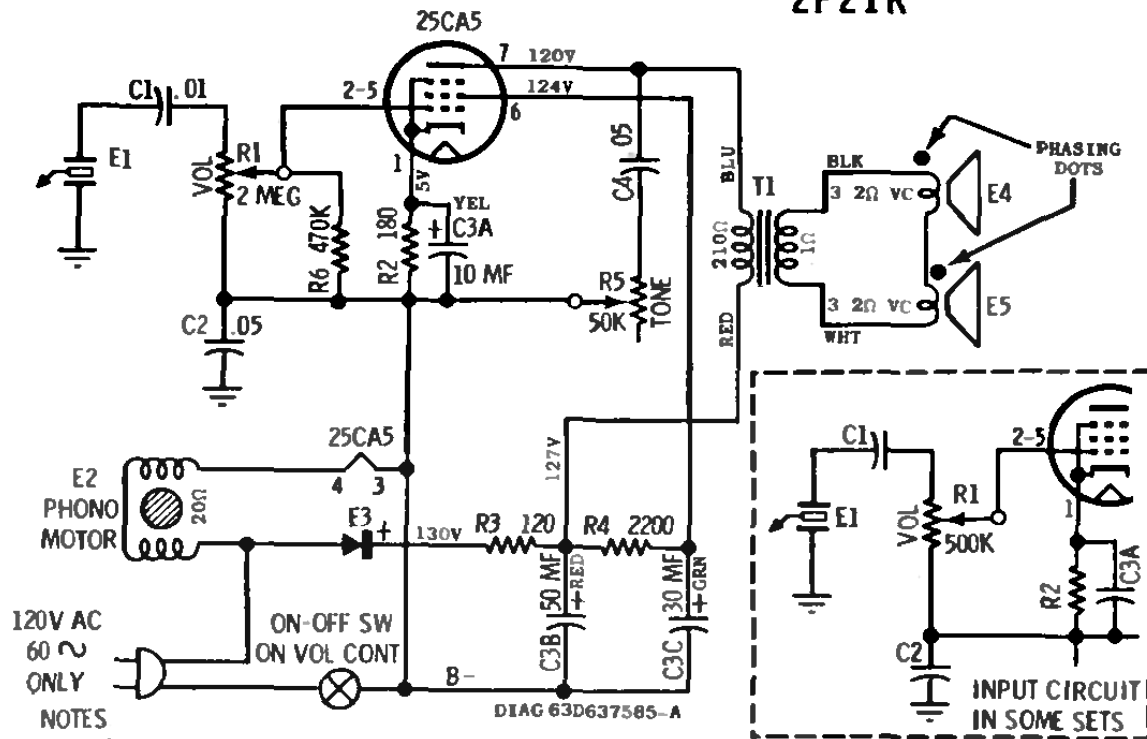


## PARTS LOCATION

## SPEAKER PHASING

**NOTE: THE SPEAKERS MUST BE PHASED OR A LOSS OF THE LOW FREQUENCIES WILL RESULT**

Phasing can be checked by momentarily connecting a 1-1/2 volt flashlight cell in parallel with the output transformer secondary and noting that the cones of all speakers move in the same direction. If they do not, reverse the connections of one speaker.



Capacitors - decimal values in MF all others in MMF unless otherwise specified.

**Voltages** - measured from point indicated to B— with a VTVM.

## DISASSEMBLY INSTRUCTIONS

### To Remove Chassis from Cabinet

1. Pull off two knobs from front of cabinet.
2. Remove four (4) phono mounting board and two (2) baffle retainer screws.
3. Lift rear of phono mounting board slightly and slide out.
4. Remove two screws which hold chassis to mounting board and remove chassis.

### To Remove Turntable

1. Remove "C" washer from spindle.
2. Remove turntable by pulling up - off of spindle.