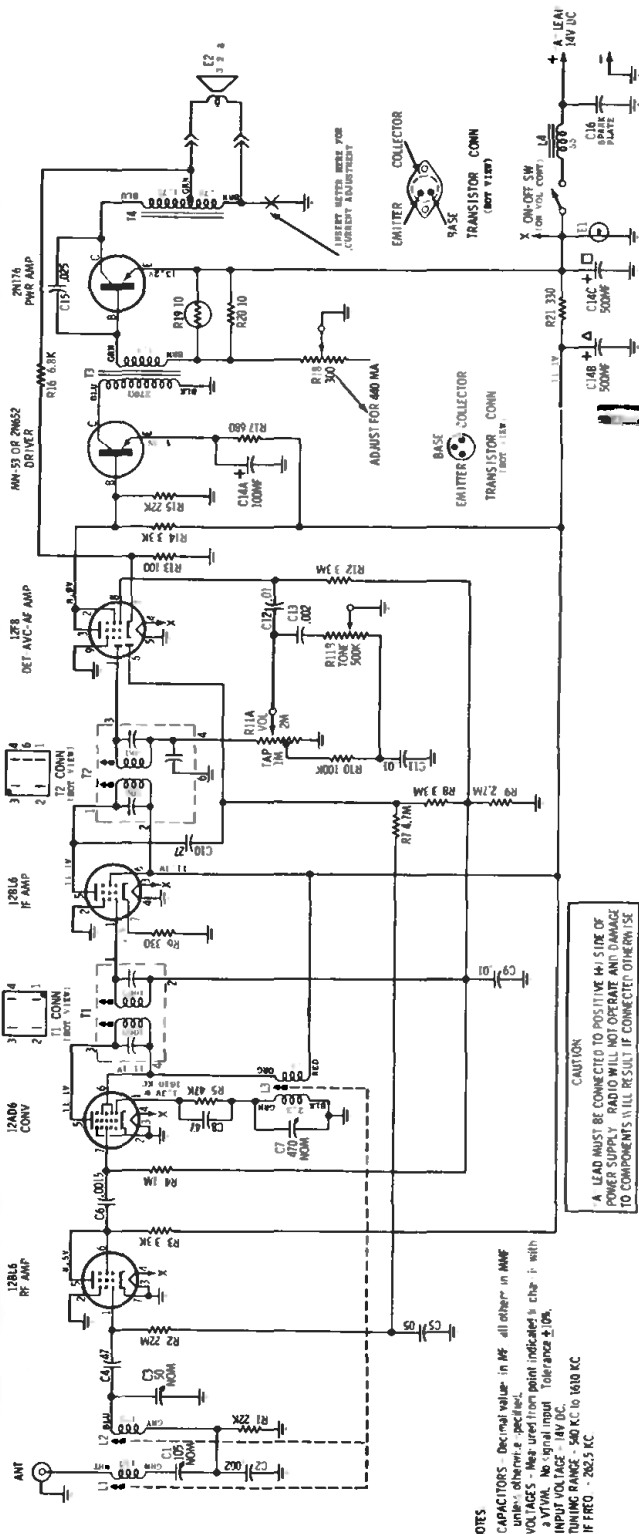


MOTOROLA

AUTO RADIO

MODEL CRM60X

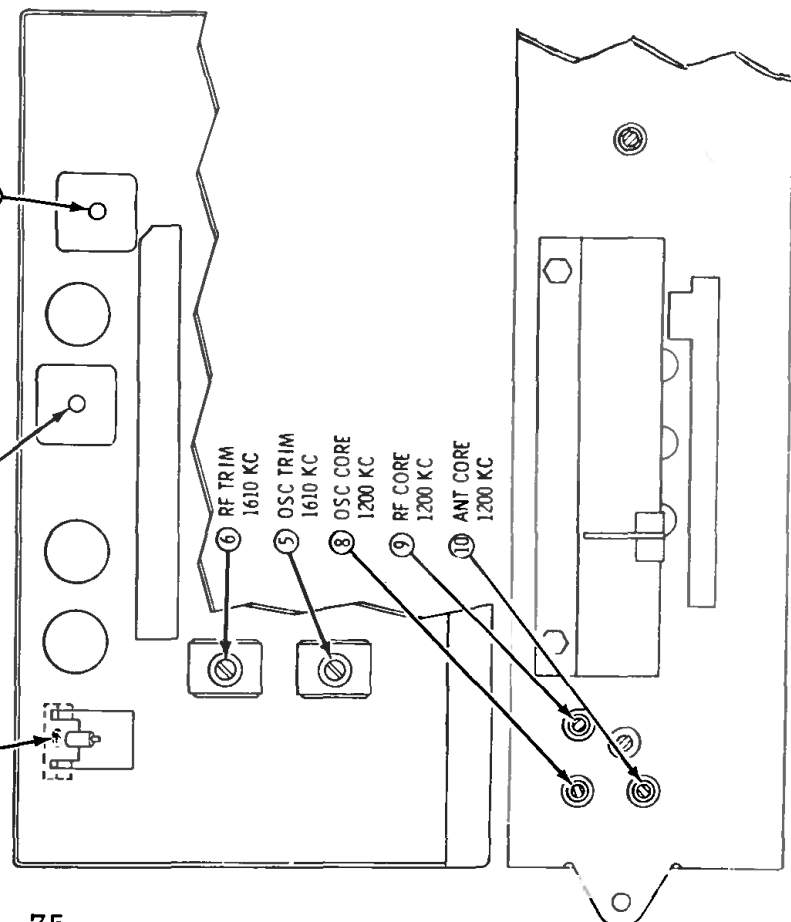
Automotive type superheterodyne receiver designed for custom installation in the 1960 Corvair car. This receiver contains a transistor driver stage, a transistor output stage, and four miniature tubes designed to operate directly from the car's storage battery.



NOTES
CAPACITORS: Decimal value in MF, all others in MMF unless otherwise specified.
VOLTAGES: Measured from point indicated in chart with 5 VTRM. No signal input. Tolerance $\pm 10\%$.
INPUT VOLTAGE: 100V DC.
IF FREQ.: 262.5 KC.

CAUTION
A LEAD MUST BE CONNECTED TO POSITIVE HI SIDE OF POWER SUPPLY. RADIO WILL NOT OPERATE AND DAMAGE TO COMPONENTS WILL RESULT IF CONNECTED OTHERWISE.

- 1ST IF 262.5 KC
 - ① TOP (TUBE SIDE)
 - ② BOT (WIRING SIDE)
- 2ND IF 262.5 KC
 - ③ TOP (TUBE SIDE)
 - ④ BOT (WIRING SIDE)



ALIGNMENT LOCATION DETAIL