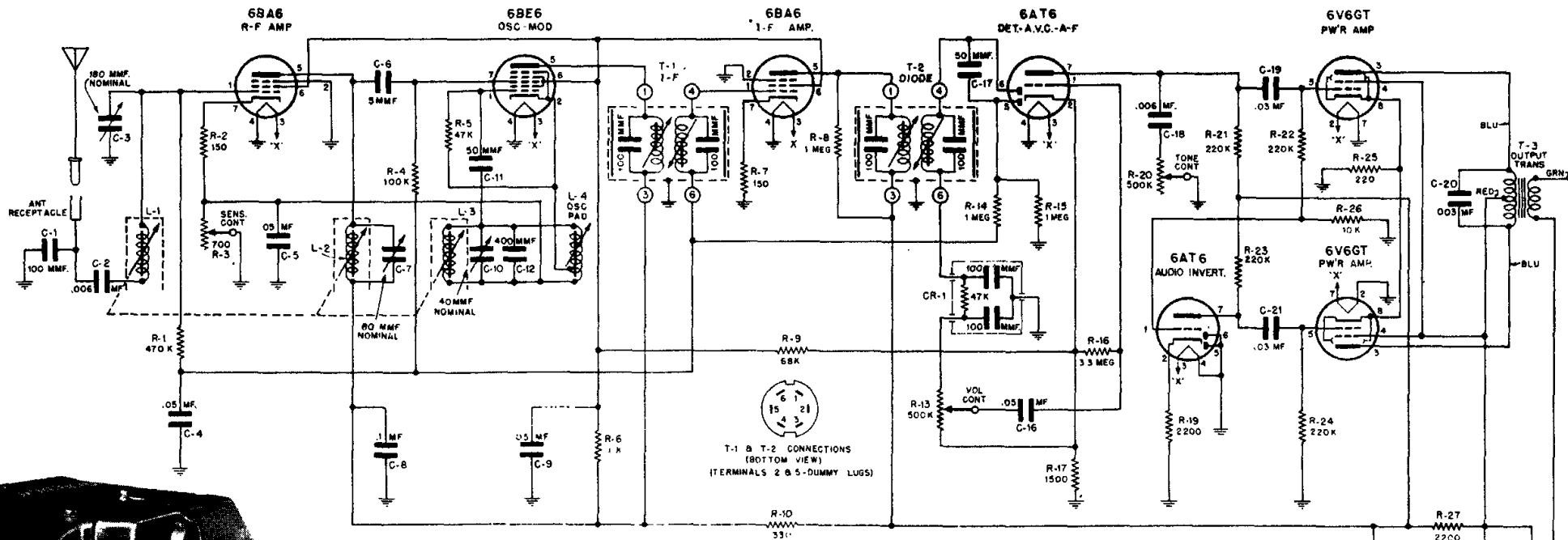


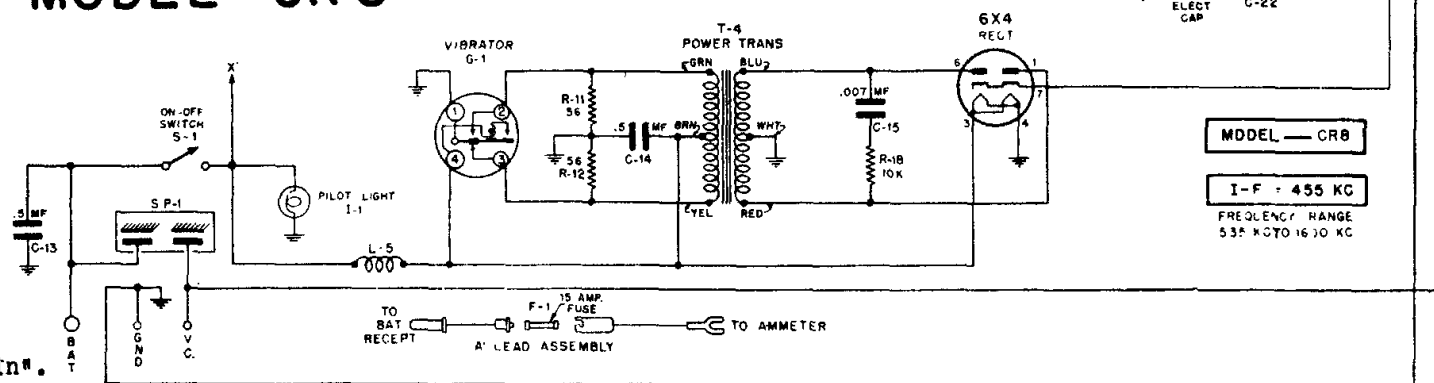
TO SET THE PUSH BUTTONS

1. Turn radio on by pushing the top button "In". Allow radio to warm up for a few minutes.
2. Push the number "1" button in as far as it will go and HOLD IT THAT WAY.
3. With the tuning knob, tune in the station you desire to set up. The pointer will indicate the frequency of the station. Tune carefully until you are exactly on the station; tuning to either side of it will result in poor tone quality. Release button and knob after tuning in station.
4. Follow above steps 2 and 3 for the remaining four buttons.



NOTES - ALL RESISTORS ARE INDICATED IN OHMS
K = ONE THOUSAND (1000) OHMS

MODEL CR 8



Motorola **AUTO** Radio

Motorola Model CR8 is an 8-tube (including rectifier) automotive superheterodyne receiver using an external speaker.

This receiver is specifically designed for installation in 1948 Plymouth, Dodge, DeSoto & Chrysler cars. It will also accommodate 1940, 1941, 1942, 1946 & 1947 Plymouth, Dodge, DeSoto & Chrysler cars.