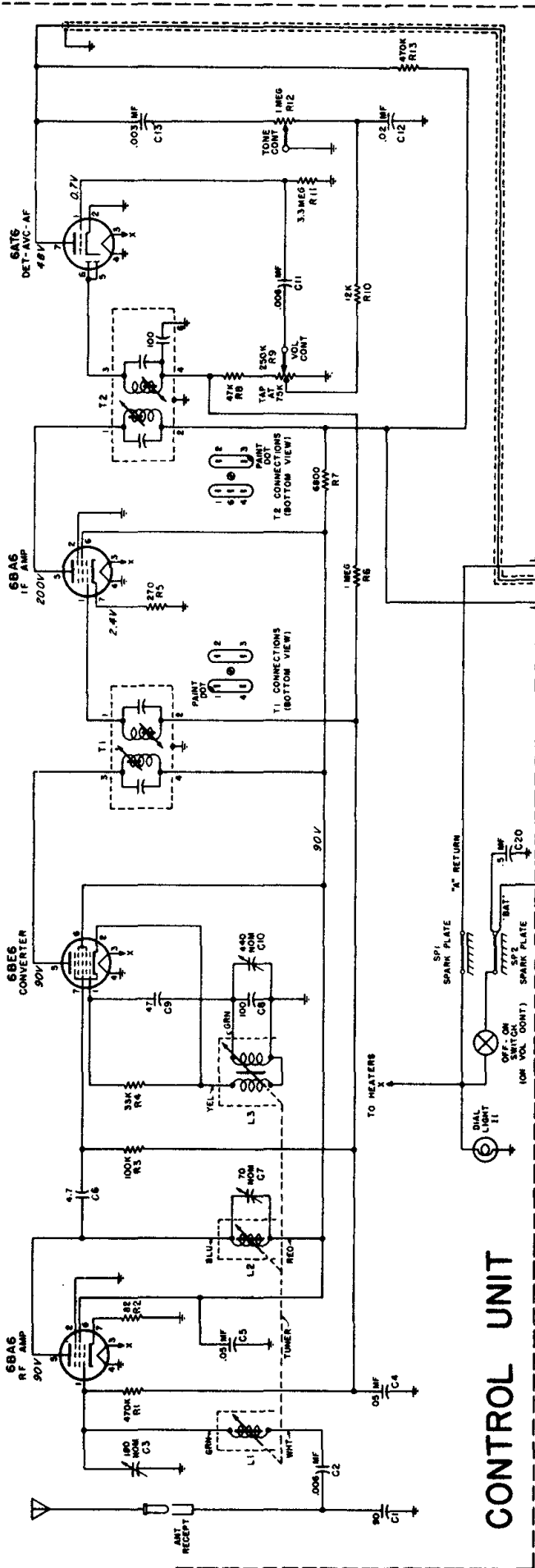
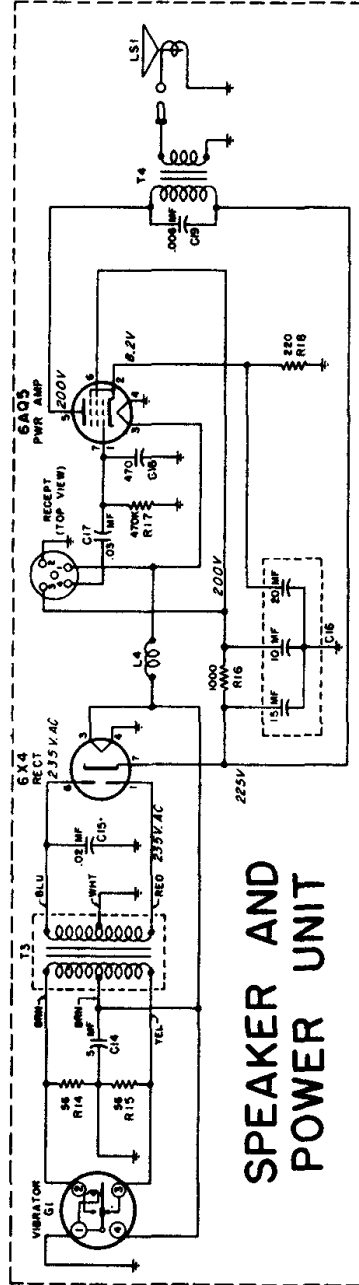


TYPE - Two-piece automotive type receiver, specifically designed for installation in Dodge D50, D51, D52, and D53 cars.



IF = 455 KC

FREQUENCY RANGE 540 TO 1600 KC

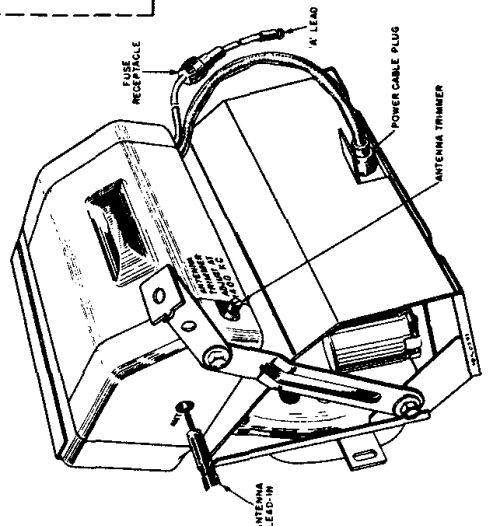
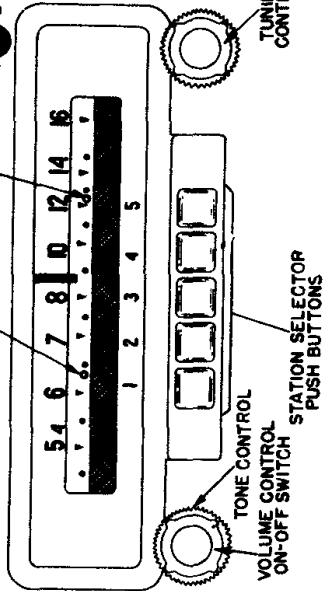


SPEAKER AND POWER UNIT

TO SET PUSHBUTTONS

1. Turn volume up until stations can be heard.
2. Pull out station selector button to unlock tuner and, with the manual tuning knob, tune to the station desired.
3. Push button in to lock tuner. This station is now set for automatic tuning.
4. Follow the same procedure for the remaining push-buttons.

CIVIL DEFENSE SYMBOL
640 KC 1240 KC



ANTENNA TRIMMER ADJUSTMENT