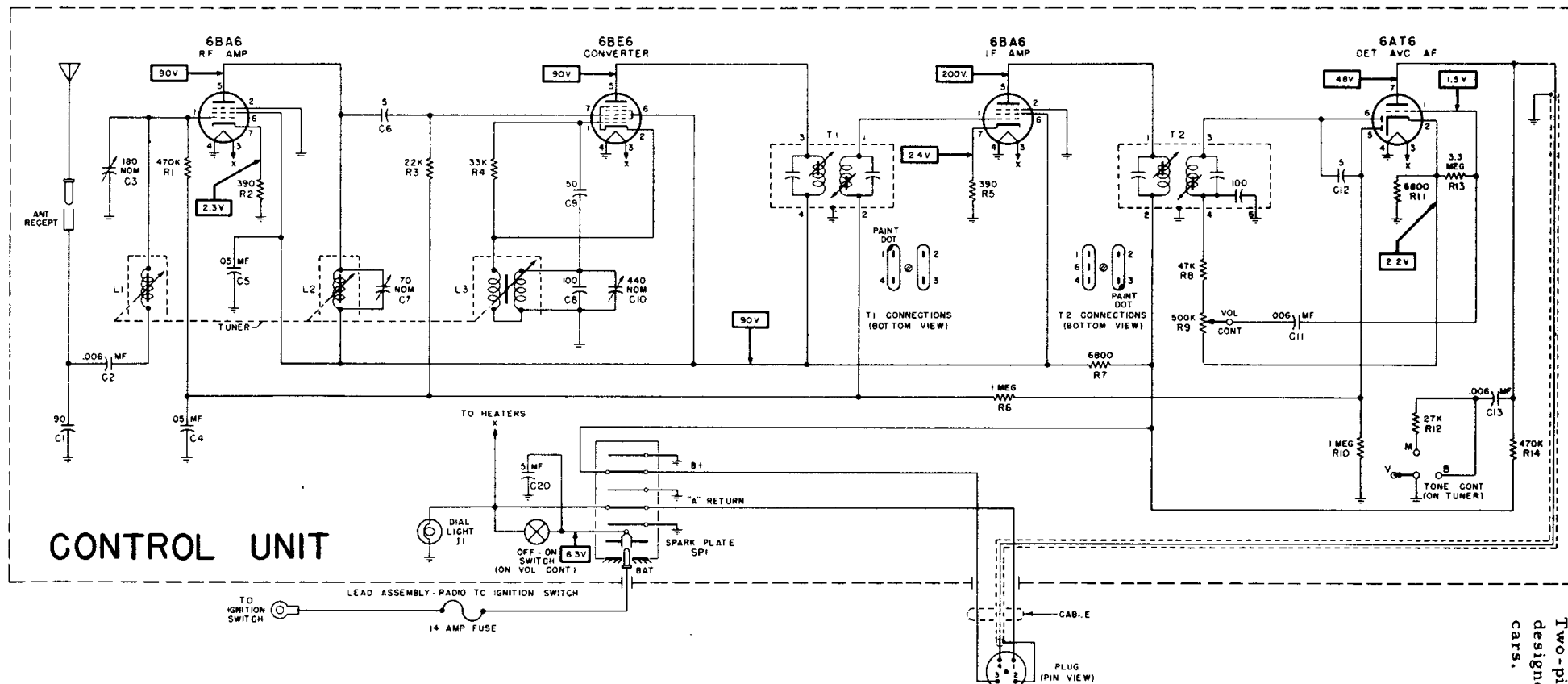


Motorola **AUTO** *Radio*

MODEL
606

Two-piece automotive type receiver, specifically designed for installation in Plymouth P-22 and P-23 cars.



NOTES

RESISTORS INDICATED IN OHMS
K: ONE THOUSAND (1000) OHMS

CAPACITORS INDICATED IN MICROMICROFARADS UNLESS OTHERWISE SPECIFIED

VOLTAGE READINGS SHOWN WERE TAKEN FROM POINT INDICATED TO CHASSIS WITH A VTVM
NO SIGNAL INPUT
INPUT VOLTAGE: 6.3V DC AT BATTERY RECEPTACLE
VOLTAGE TOLERANCE $\pm 10\%$

IF = 455 KC

FREQUENCY RANGE 540 TO 1600 KC

