

Electrical Specifications

TYPE OF CIRCUIT: Five tube, A.C. operated superheterodyne circuit with features, such as two tuning ranges covering the frequencies shown under "Tuning Ranges"; Automatic Volume Control; and a Pentode Audio Output Stage.

PHILCO TUBES USED: Five—one 6A8G, Det. osc.; one 6K7G, I. F.; one 6Q7G, 2nd Det. 1st audio; one 6F6G, output, and one 5Y4G, Rectifier.

TONE CONTROL: Two position with A.C. switch attached.

SPEAKERS: Type S7 in T Cabinet, HS in F Cabinet.

The part number of these transformers are shown on the Parts List Page

INTERMEDIATE FREQUENCY: 470 K. C.

TUNING RANGES: Two—Range 1, 540 to 1720 K. C.
Range 2, 5.7 to 18 M. C.

UNDISTORTED OUTPUT: 3 watts.

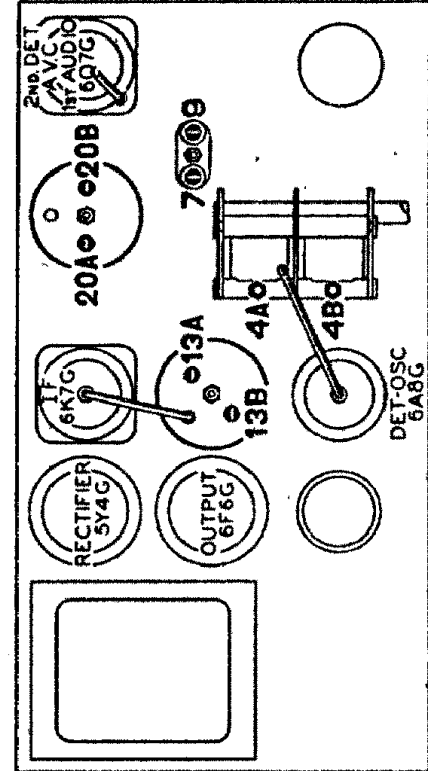


Fig. 2. Locations of Compensator—Top of Chassis

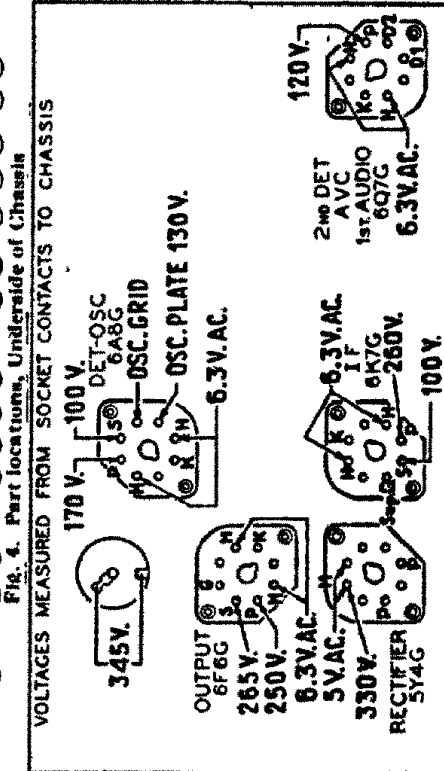
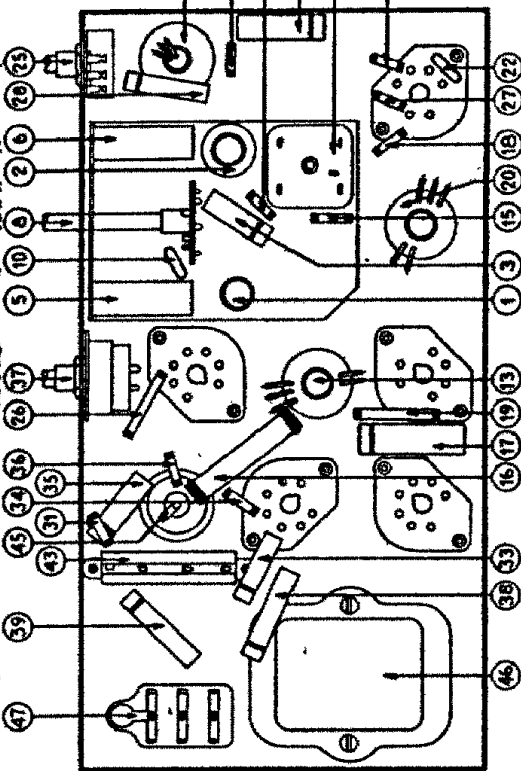


Fig. 4. Part locations, Underside of Chassis

Fig. 1. Socket Voltages, Underside of Chassis

The voltages indicated by arrows were measured with a Philco 926 Circuit Tester which contains an accurate voltmeter. Volume Control at minimum, range switch in broadcast position, line voltage 115 A. C.